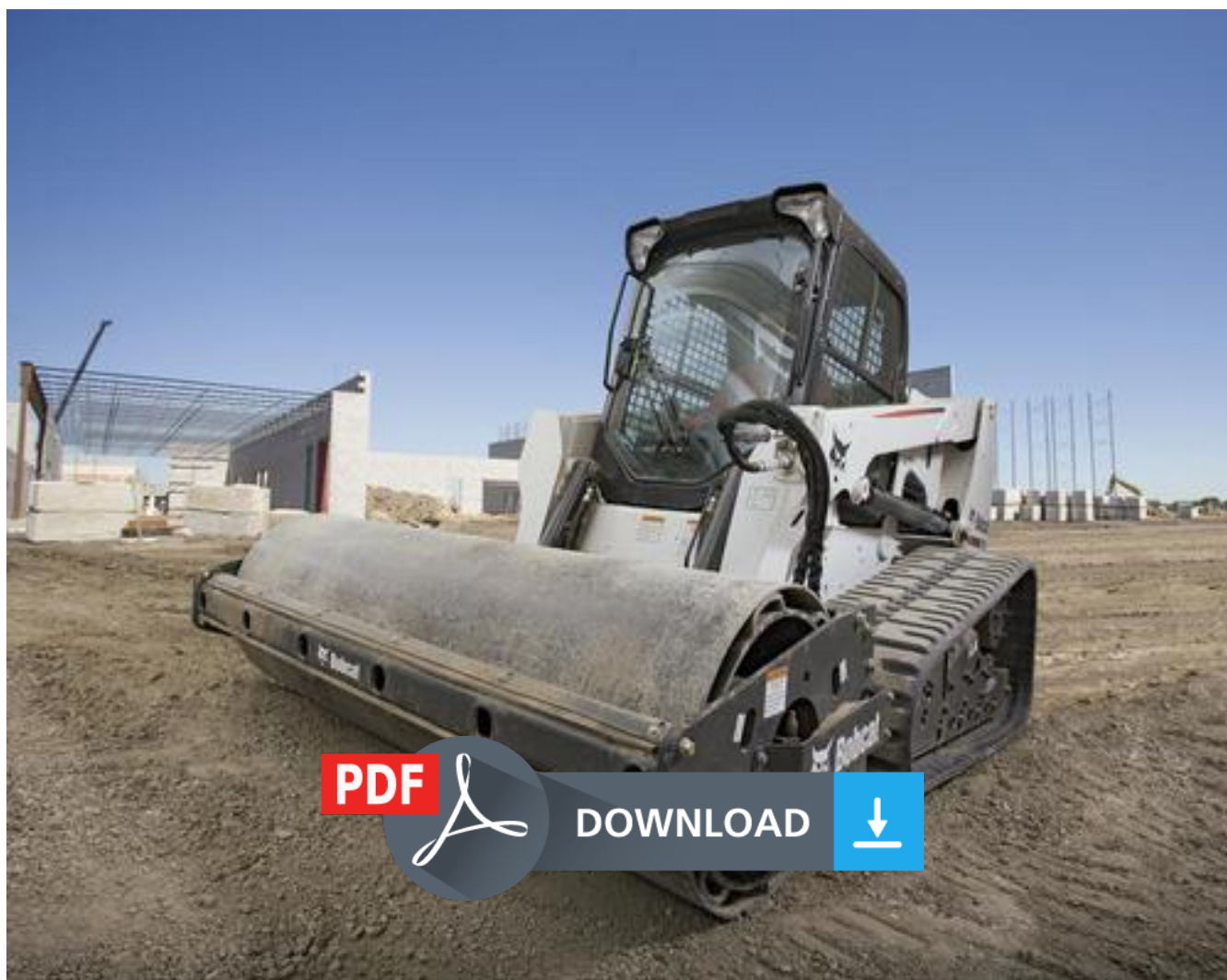


Bobcat 325, 328 Mini Excavator Service Repair Workshop Manual 232511001  
232411001





1213

# SERVICE MANUAL



Dealer Copy -- Not for Resale



# FOREWORD

This manual gives the owner/operator necessary operating, servicing and adjustment of the Feller Buncher and overhaul instructions of the drive system, loader hydraulic/hydrostatic system and general main frame parts.

Refer to the Operator's Manual for operating instructions (Starting Procedure, Daily Checks, Bucket Operation, etc.).

A General inspection of the following items must be made whenever the Feller Buncher has had service or repair:

1. Check hydraulic fluid level, engine oil level and fuel supply.
2. Inspect for any sign of fuel, oil or hydraulic fluid leaks.
3. Lubricate the Feller Buncher.
4. Check the condition of the battery and cables.
5. Inspect air cleaner for damage or leaks. Check element and replace as needed.
6. Check electrical charging system.
7. Check the warning lights.
8. Check tires for wear and pressure.
9. Check the tree shear for condition.
10. Inspect Operator Cab, Seat Belt, Seat Bar Safety Treads, Lights, Horn, Safety Signs (Decals), Brake etc.
11. Inspect for loose or broken parts or connections.
12. Operate the Feller Buncher and check all functions.
13. Inform the Owner/Operator of any items that need service.

PREVENTIVE  
MAINTENANCE

HYDRAULIC  
SYSTEM

HYDROSTATIC  
SYSTEM

DRIVE  
SYSTEM

MAIN  
FRAME

ELECTRICAL  
SYSTEM

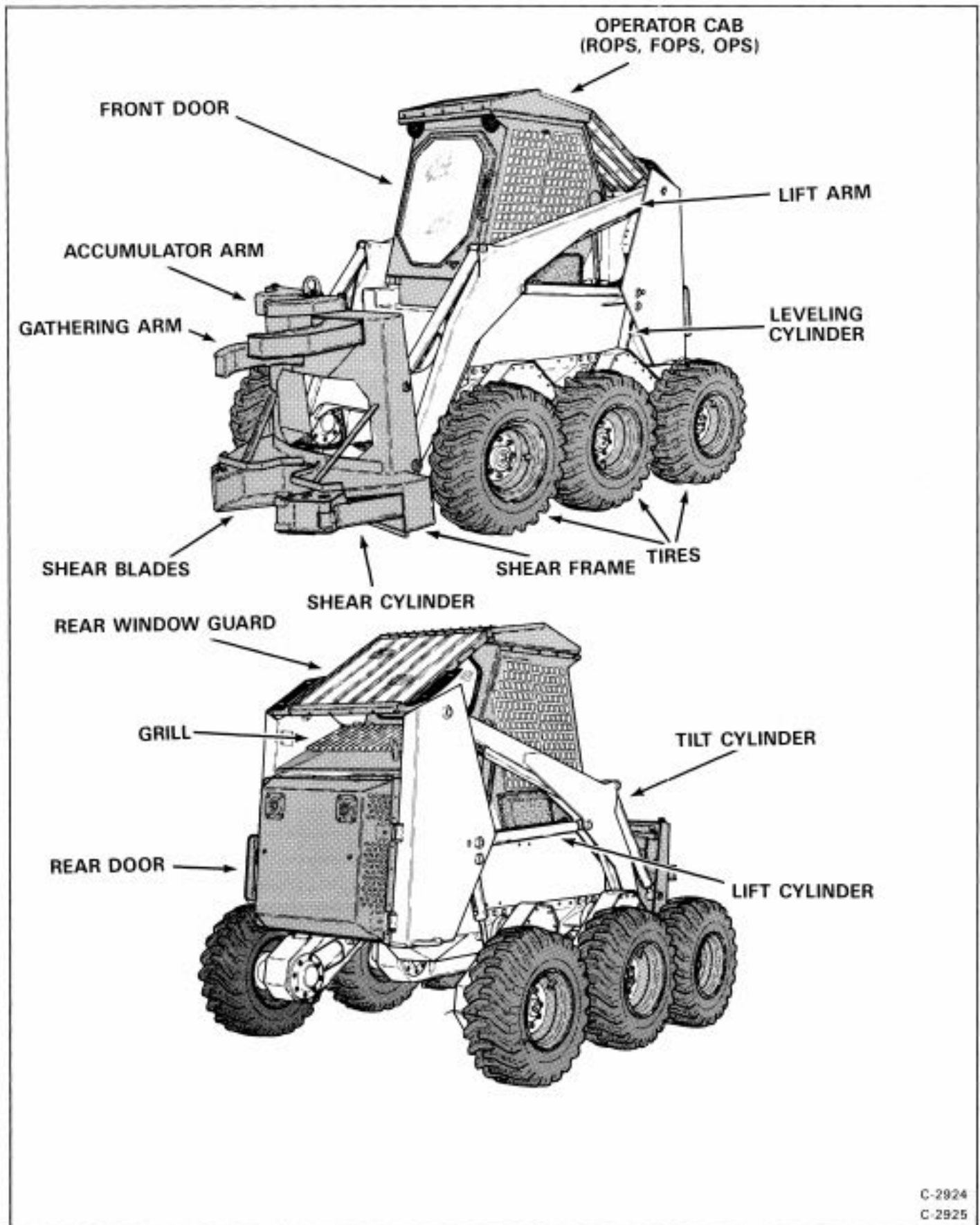
ENGINE  
SERVICE

TECHNICAL  
DATA

# CONTENTS

SAFETY INSTRUCTIONS . . . . .	i
FIRE PREVENTION . . . . .	ii
SERIAL NUMBER LOCATIONS . . . . .	iii
DELIVERY REPORT . . . . .	iii
FELLER BUNCHER IDENTIFICATION . . . . .	iv
PREVENTIVE MAINTENANCE . . . . .	1
HYDRAULIC SYSTEM . . . . .	2
HYDROSTATIC SYSTEM . . . . .	3
DRIVE SYSTEM . . . . .	4
MAIN FRAME . . . . .	5
ELECTRICAL SYSTEM . . . . .	6
ENGINE SERVICE . . . . .	7
TECHNICAL DATA . . . . .	8

## V. FELLER BUNCHER IDENTIFICATION



Dealer Copy -- Not for Resale

ROPS, FOPS,OPS – Roll-Over Protection Structure, Falling Object Protection, Operator Protective Structure, per SAE J231 & SAE J1084. The Feller Buncher is base equipped with a standard operator cab as shown.



Thank you very much  
for your reading.  
Please click here  
to get more information.