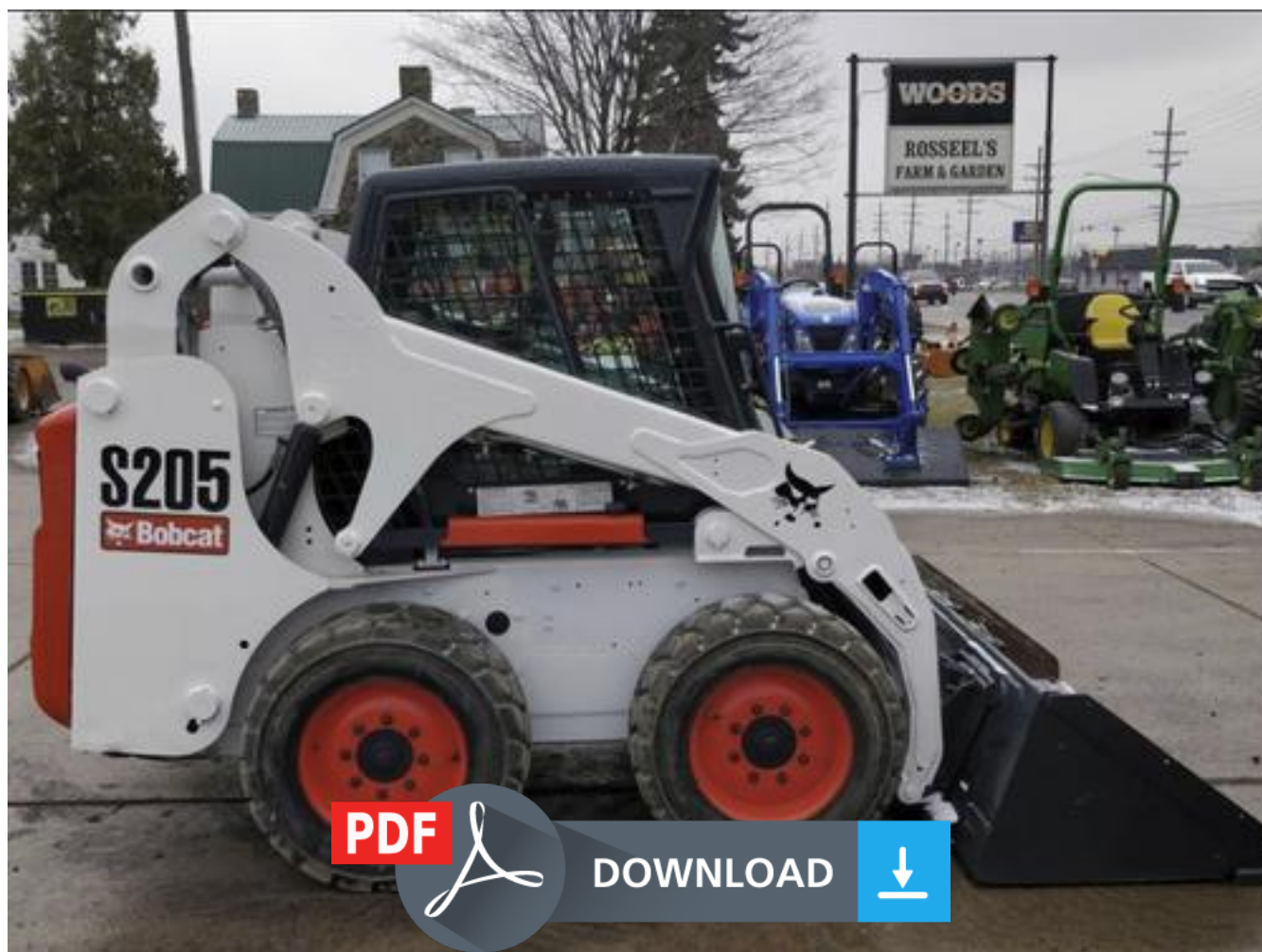


# Bobcat 653 Skid Steer Loader Service Repair Workshop Manual





# Bobcat®

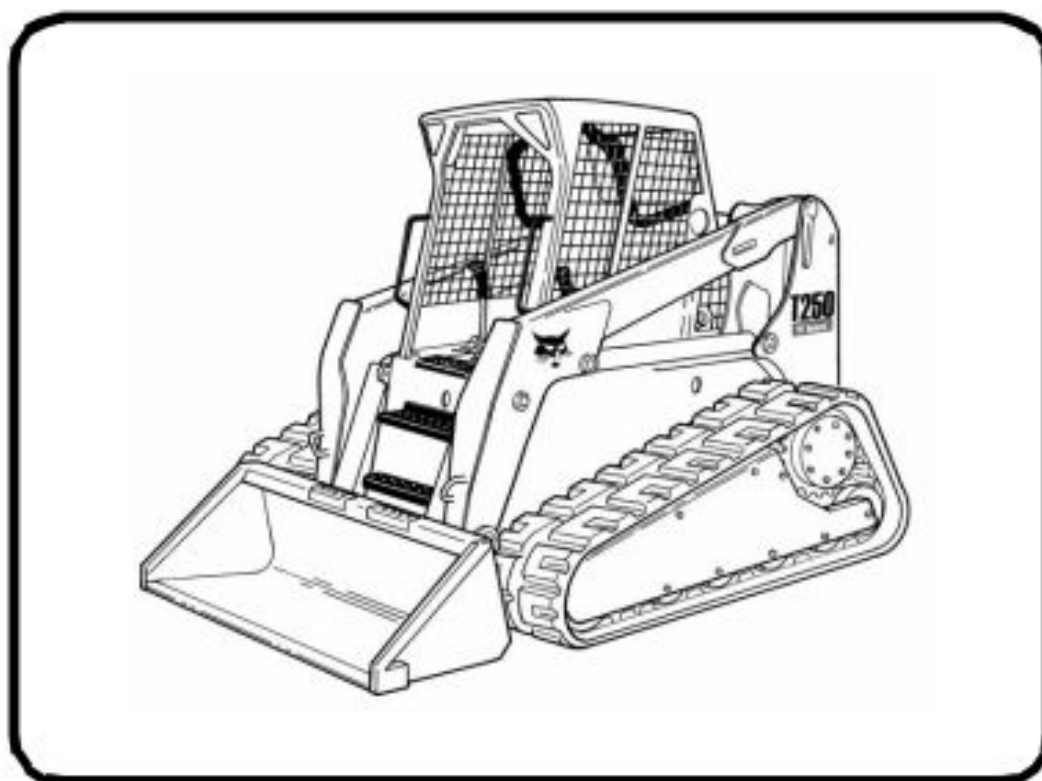
---

## Service Manual

# T250 Compact Track Loader

---

**S/N A5GS20001 & Above**  
**S/N A5GT20001 & Above**



Dealer Copy -- Not for Resale

**EQUIPPED WITH  
BOBCAT INTERLOCK  
CONTROL SYSTEM (BICS™)**



## CONTENTS

|  |     |
|--|-----|
| BOBCAT OPERATION . . . . .                         | 1   |
| LOADER SERVICE AND MAINTENANCE . . . . .           | 5   |
| CONTINENTAL ENGINE SERVICE . . . . .               | 117 |
| ELECTRICAL SERVICE . . . . .                       | 19  |
| HYDRAULIC AND HYDROSTATIC<br>SERVICE . . . . .     | 25  |
| MECHANICAL DRIVE . . . . .                         | 73  |
| PERKINS ENGINE SERVICE . . . . .                   | 85  |
| TECHNICAL DATA, LIMITS AND<br>CLEARANCES . . . . . | 144 |

BOBCAT  
OPERATION

LOADER SERVICE  
AND MAINTENANCE

ELECTRICAL  
SERVICE

HYDRAULIC AND  
HYDROSTATIC  
SERVICE

MECHANICAL  
DRIVE

PERKINS ENGINE  
SERVICE

CONTINENTAL  
ENGINE SERVICE

TECHNICAL DATA,  
LIMITS AND  
CLEARANCES

## BOB-TACH SYSTEM (Figure 12)

The Bob-Tach system provides for rapid changes of buckets or attachments.

Procedure for mounting attachment:

1. Tilt Bob-Tach forward slightly with lift arms in down position. Locking levers must be in unlocked up position.
2. Maneuver machine until upper lip of Bob-Tach is aligned directly beneath mounting flange on bucket or attachment (Figure 13).
3. Raise lift arms until Bob-Tach contacts mounting flange and lift attachment slightly.
4. Roll back Bob-Tach allowing attachment to swing into position on lower portion of Bob-Tach frame (Figure 14).
5. Engage locking mechanism by rotating levers downward into locked position (Figure 12).

### WARNING

Be certain both locking wedges are fully engaged before placing unit into operation.

Procedure for dismounting attachment:

1. Lower lift arms fully with attachment in rollback position.
2. Release locking mechanism by rotating levers up.
3. Tilt Bob-Tach forward and slowly back Bobcat away.

## TRANSPORTING THE M-970

Emergency Towing:

The "Neutral Brake" feature of the hydrostatic drive system prevents the loader from being towed if the engine is not running. In order to allow the M-970 to be towed short distances, a set of bypass valves are designed into the drive system. Opening these valves will provide a hydraulic fluid "bypass" allowing the loader to be towed slowly, for a short distance, to a convenient repair or loading area.

The towing valves are located at the rear of the hydraulic control pedal mounting plate. It is necessary to tilt the operator enclosure to gain access to them (Figure 15).

### WARNING

Do not tow the loader at more than 2 MPH or for a distance of greater than 50 yards or serious transmission damage may result.

## TRANSPORTING BY TRUCK OR TRAILER

Use steel ramps of a suitable length to load the Bobcat onto the transporting vehicle. Planks should not be used as a substitute.

With bucket empty, back up ramps. When loaded, drop bucket to floor and chain Bobcat in place.

## HOISTING THE M-970

When using the single point lift for hoisting the M-970, the lift arms must first be locked to the frame.

On machines equipped with lift bails, be certain chains or cables are fastened securely. Be careful not to damage any hydraulic lines when hoisting. Do not attach hoisting cables or chains to any place other than lift bails.

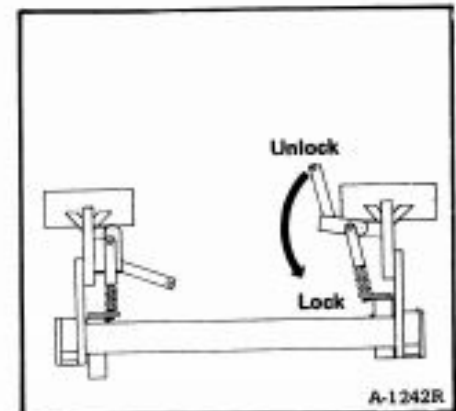


Fig. 12 Bob-Tach System



Fig. 13 Alignment Position

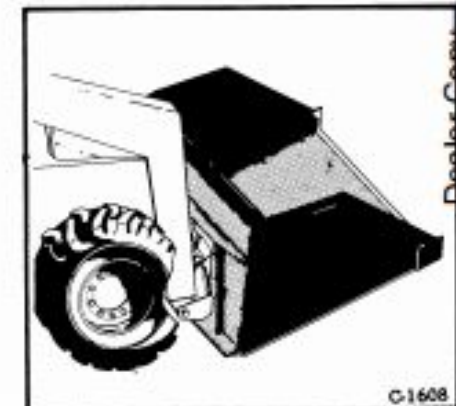


Fig. 14 Locking Position

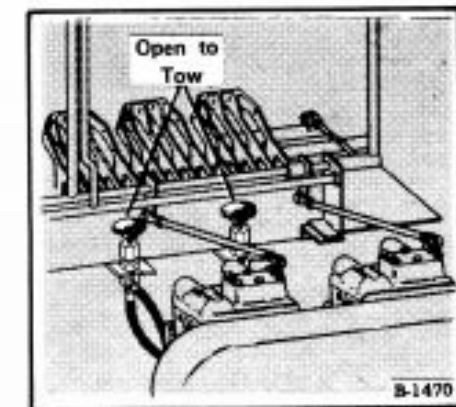


Fig. 15 Towing Valves



Thank you very much  
for your reading.  
Please click here  
to get more information.