

# Bobcat 863 Turbo High Flow Skid Steer Loader Service Repair Workshop Manual 514440001-514640001



# 753

**INCLUDES  
HIGH FLOW  
OPTION**



# Bobcat®

## Service Manual

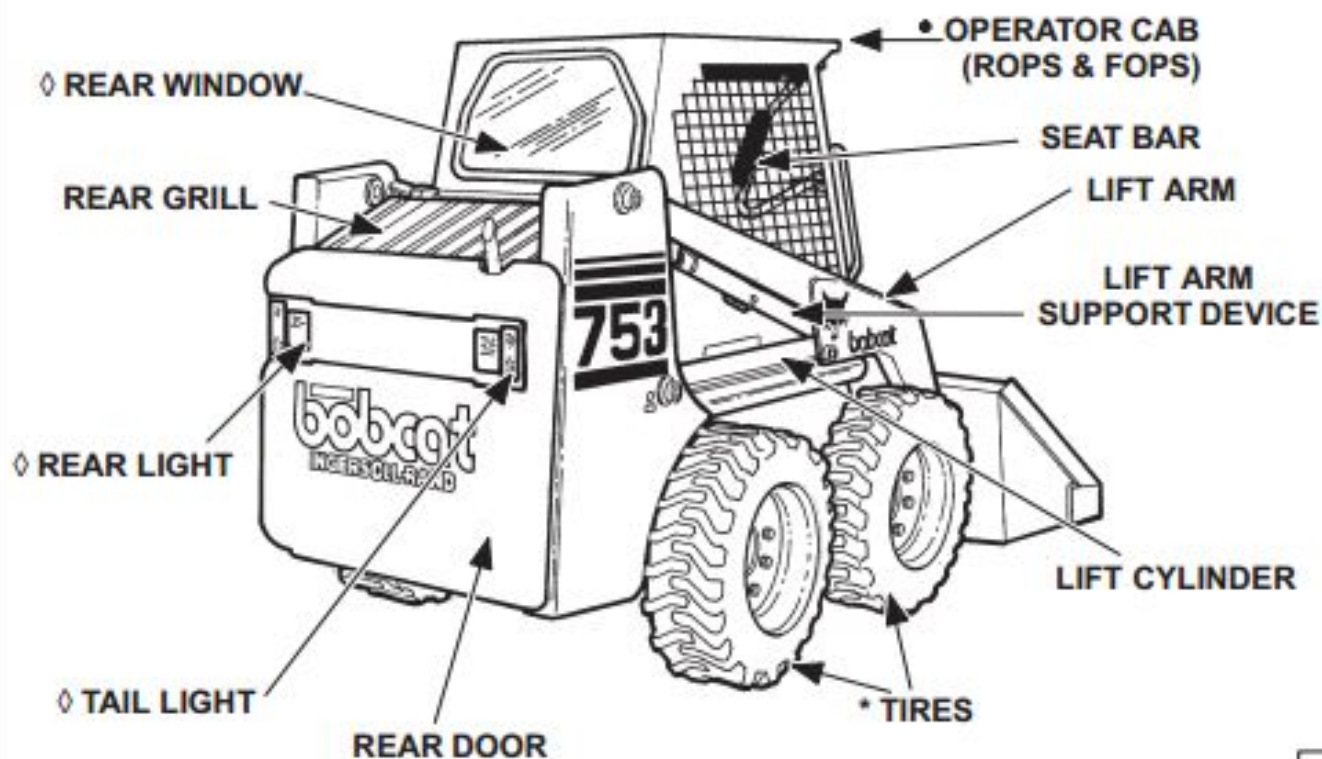
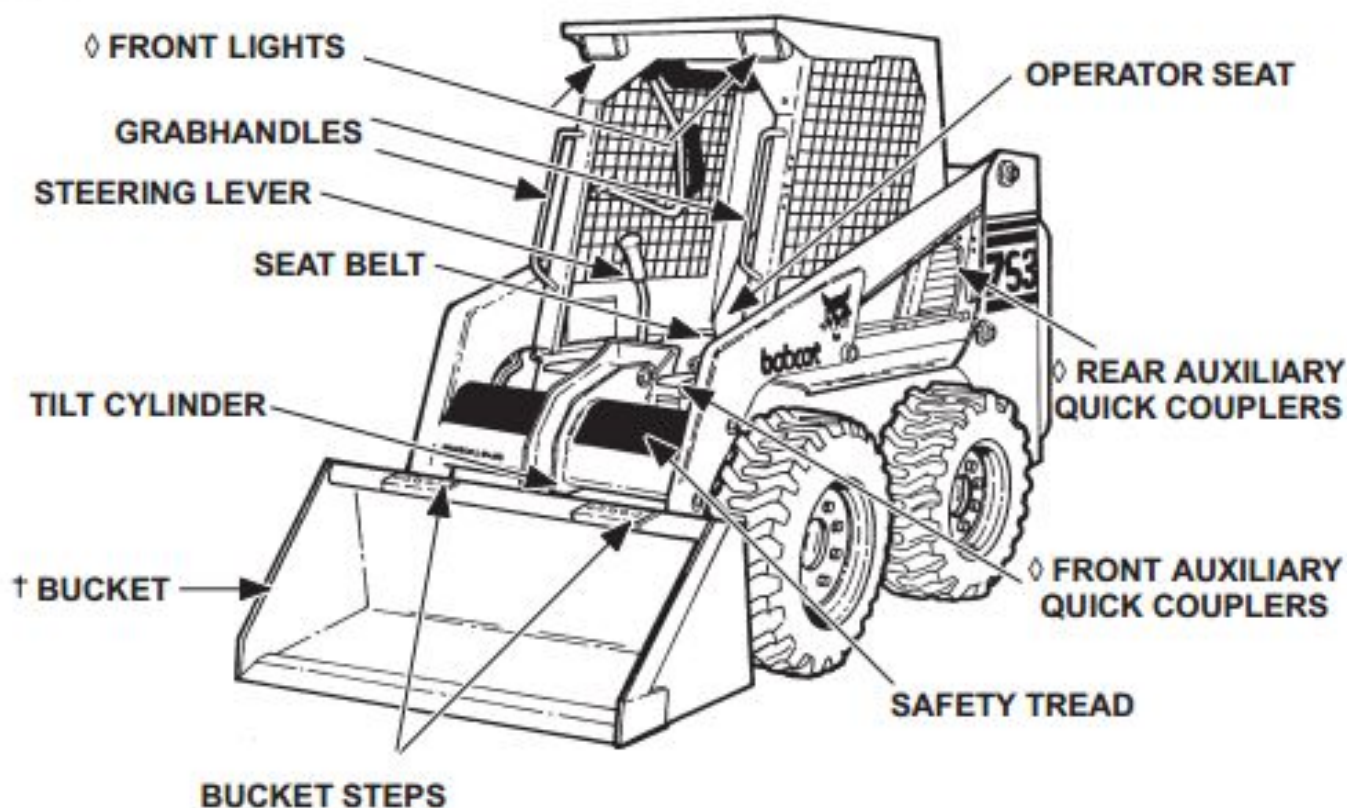
S/N 508630001 & Above  
S/N 511476001 & Above  
S/N 512716001 & Above  
S/N 513911001–513911148  
S/N 515811001–515829999  
S/N 516211001–516219999

EQUIPPED WITH  
BOBCAT INTERLOCK  
CONTROL SYSTEM (BICS™)





## BOBCAT LOADER IDENTIFICATION



◇ OPTIONAL OR FIELD ACCESSORY (Not Standard Equipment)

\* TIRES – Flotation tires (optional) are shown. The Bobcat loader is factory equipped with standard tires.

† BUCKET – Several different buckets and other attachments are available for the Bobcat loader.

• ROPS, FOPS – Roll Over Protective Structure, Falling Object Protective Structure, per SAE J1040 and ISO 3471, and Falling Object Protective Structure per SAE J1043 and ISO 3449, Level I. Level II is available. The Bobcat loader is base-equipped with a standard operator cab as shown. Extra insulated cab is available as an option (Reduced noise level).

## ENGINE LUBRICATION SYSTEM

### Checking Engine Oil

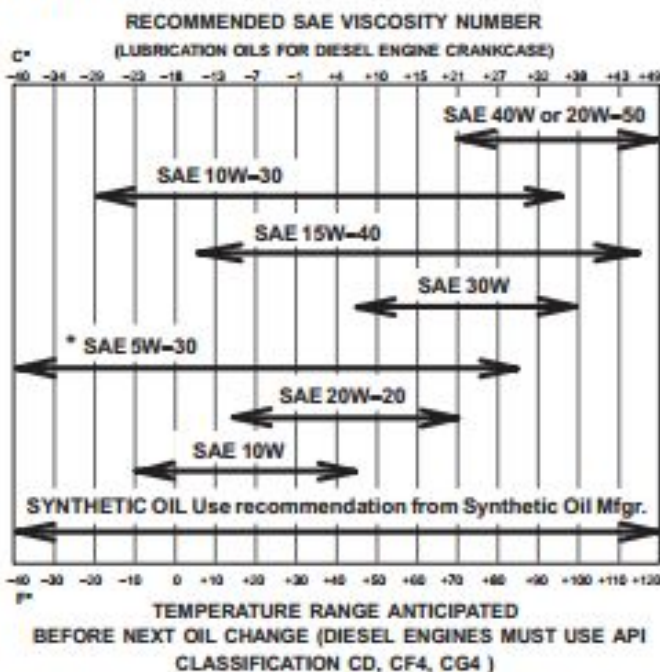
Check the engine oil level every day before starting the engine for the work shift.

Open the rear door and remove the dipstick (Item 1) [A].

Keep the oil level between the marks on the dipstick.

Use a good quality motor oil that meets API Service Classification of CD or better (See Oil Chart below).

### Oil Chart



### Replacing Oil And Filter

See the *SERVICE SCHEDULE* Page 1-3 for the service interval for replacing the engine oil and filter.

Run the engine until it is at operating temperature. Stop the engine.

Open the rear door.

Remove the drain plug (Item 1) [B].

Drain the oil into a container and dispose of used oil in an environmentally safe manner.





Thank you very much  
for your reading.  
Please click here  
to get more information.