

Bobcat S250 S300 Skid Steer Loader Service Repair Workshop Manual A5GM11001-A5GR11001



753

**INCLUDES
HIGH FLOW
OPTION**



Bobcat®

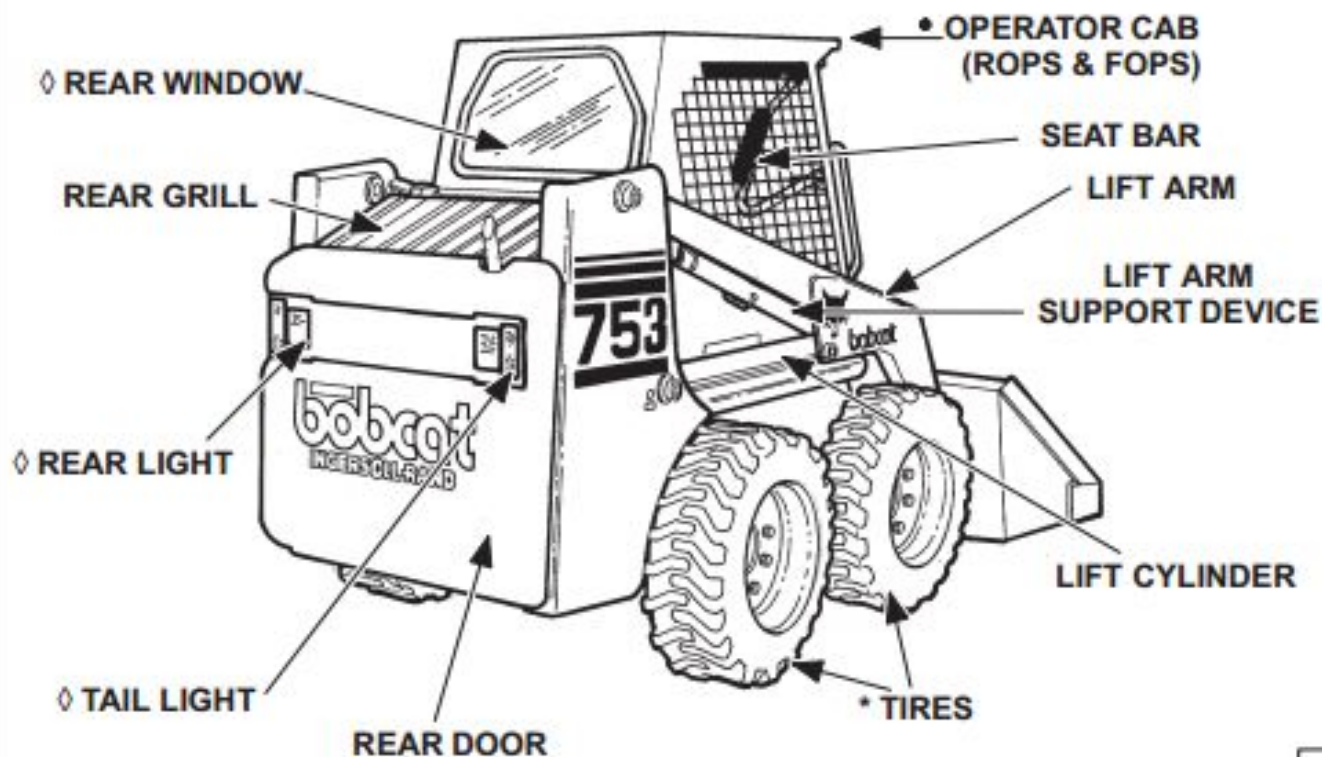
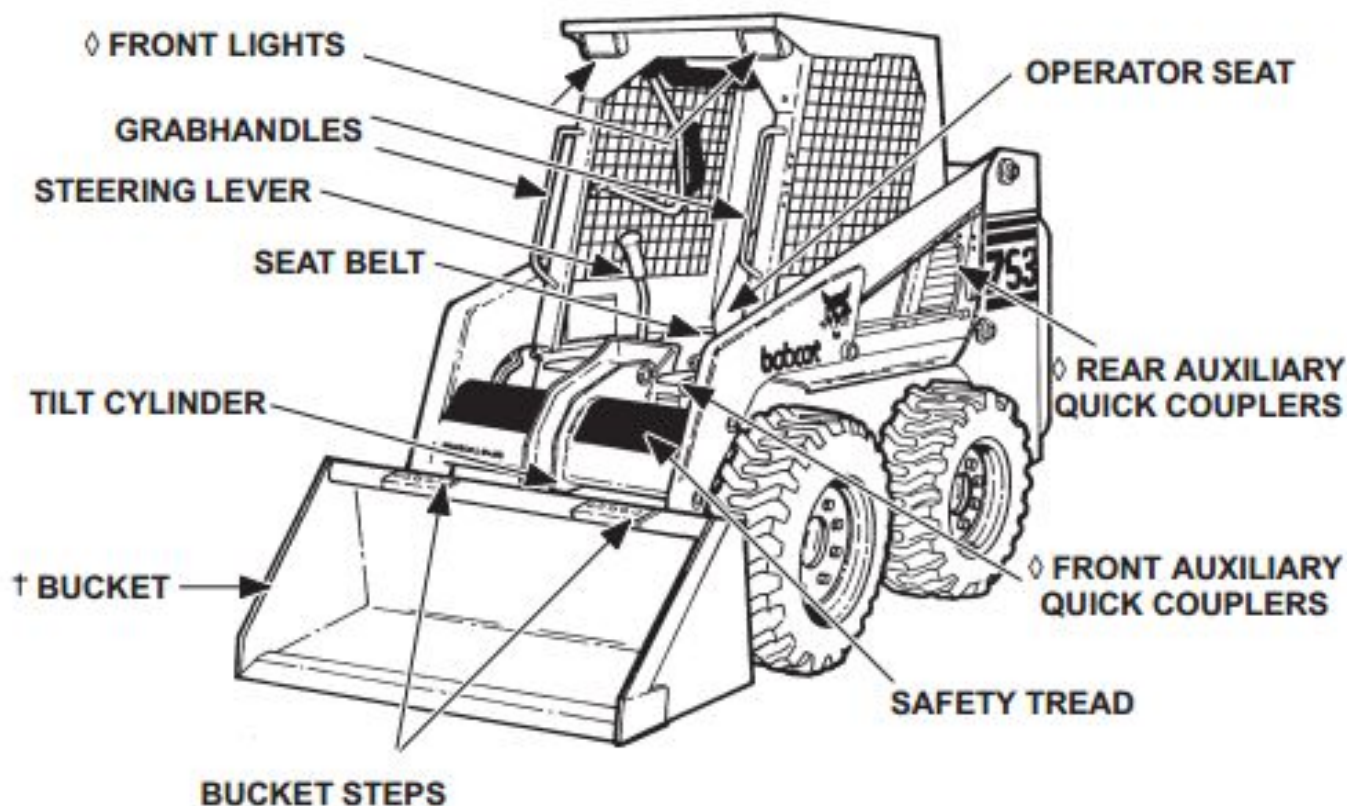
Service Manual

S/N 508630001 & Above
S/N 511476001 & Above
S/N 512716001 & Above
S/N 513911001–513911148
S/N 515811001–515829999
S/N 516211001–516219999

EQUIPPED WITH
BOBCAT INTERLOCK
CONTROL SYSTEM (BICS™)



BOBCAT LOADER IDENTIFICATION



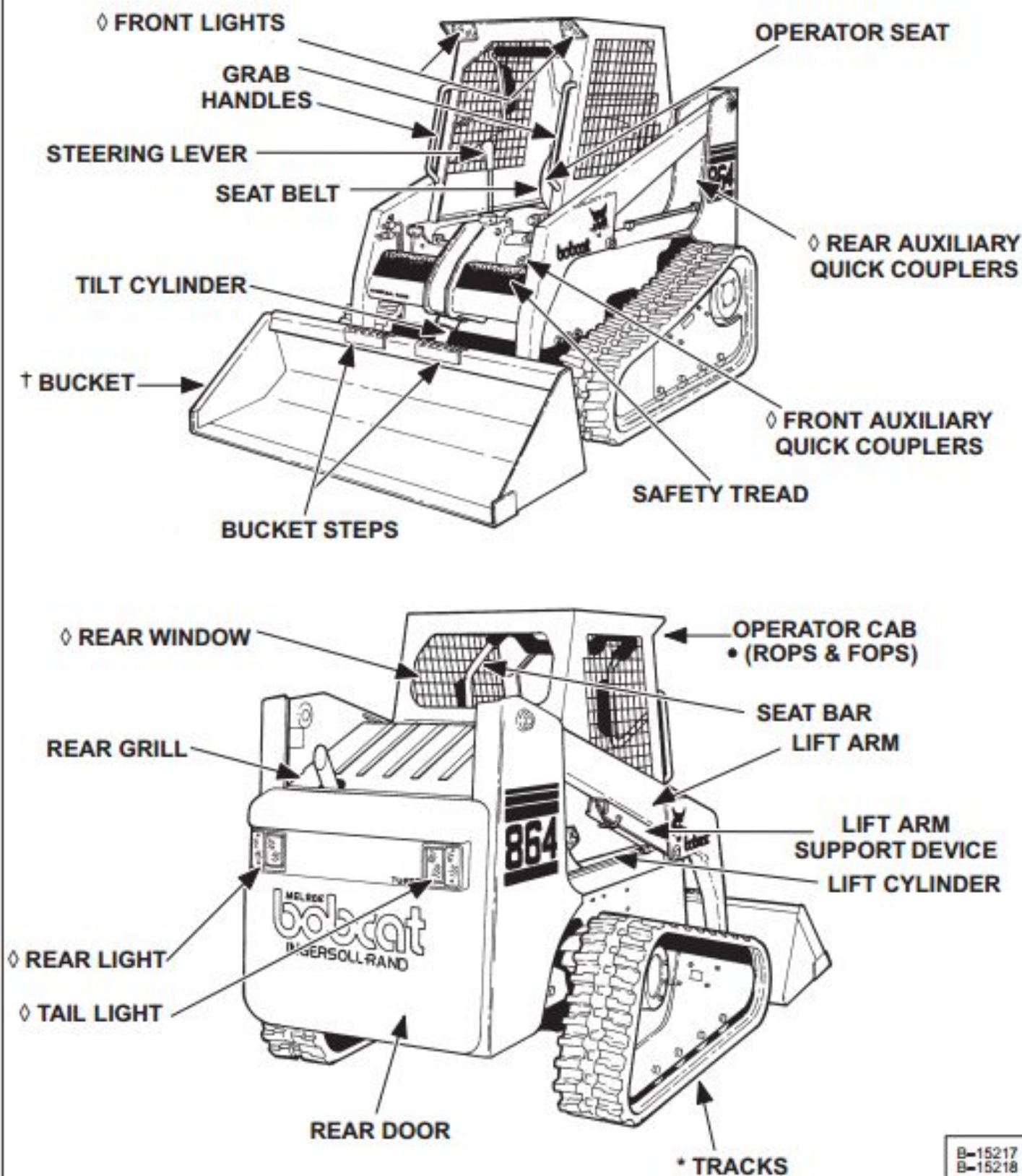
◇ OPTIONAL OR FIELD ACCESSORY (Not Standard Equipment)

* TIRES – Flotation tires (optional) are shown. The Bobcat loader is factory equipped with standard tires.

† BUCKET – Several different buckets and other attachments are available for the Bobcat loader.

* ROPS, FOPS – Roll Over Protective Structure, Falling Object Protective Structure, per SAE J1040 and ISO 3471, and Falling Object Protective Structure per SAE J1043 and ISO 3449, Level I. Level II is available. The Bobcat loader is base-equipped with a standard operator cab as shown. Extra insulated cab is available as an option (Reduced noise level).

BOBCAT LOADER IDENTIFICATION



Dealer Copy -- Not for Resale



Thank you very much
for your reading.
Please click here
to get more information.