

# Bobcat X320 Mini Excavator Service Repair Workshop Manual 511720001





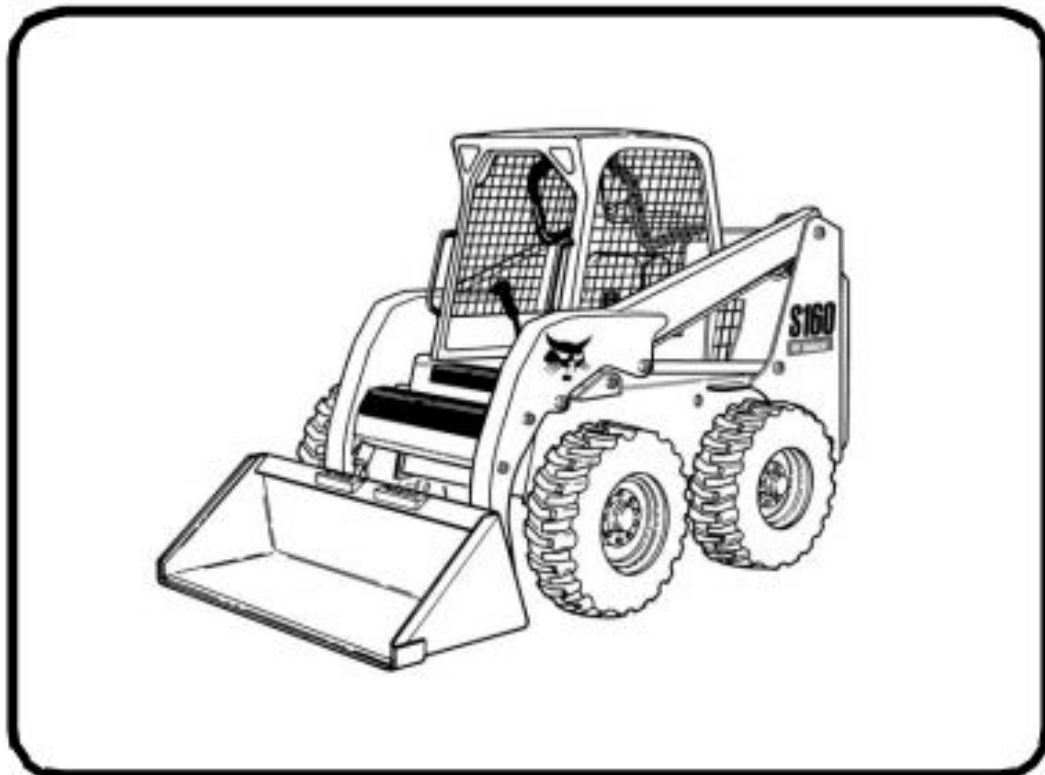
# Bobcat®

---

## Service Manual S160 Skid-Steer Loader

---

S/N A3L311001 & Above  
S/N A3L411001 & Above



Dealer Copy -- Not for Resale

EQUIPPED WITH  
BOBCAT INTERLOCK  
CONTROL SYSTEM (BICS™)



## HYDRAULIC CYLINDER

### CYLINDER IDENTIFICATION

Tilt Cylinder Components On 753 & 853 .....	7
Tilt Cylinder Components On 753 & 853 .....	8
Tilt Cylinder Components 640 & 740 Series (Equipped With Cushion Sleeve) .....	6
Tilt Cylinder Components On 540, 640, *740 Series & 843) (*Not Equipped With Cushion Sleeve) .....	5
Tilt Cylinder Components On Farmboy, 440, 443 .....	4
Lift Cylinder Components On All 40 Series .....	3

### HYDRAULIC CYLINDER

Assembly .....	11
Cylinders With Cushioned Piston .....	14
Cylinders Without Cushioned Piston .....	15
Disassembly .....	9

### HYDRAULIC CYLINDER SERVICE TOOLS

MEL1032 Or MEL1033 Rod Seal Tool .....	1
MEL1075 Adjustable Gland Nut Wrench .....	1
MEL1178 Seal Tool .....	2
MEL1076 Cylinder Wrench .....	2
MEL1074 O-ring Seal Hook .....	1
MEL1396 Seal Tool .....	1

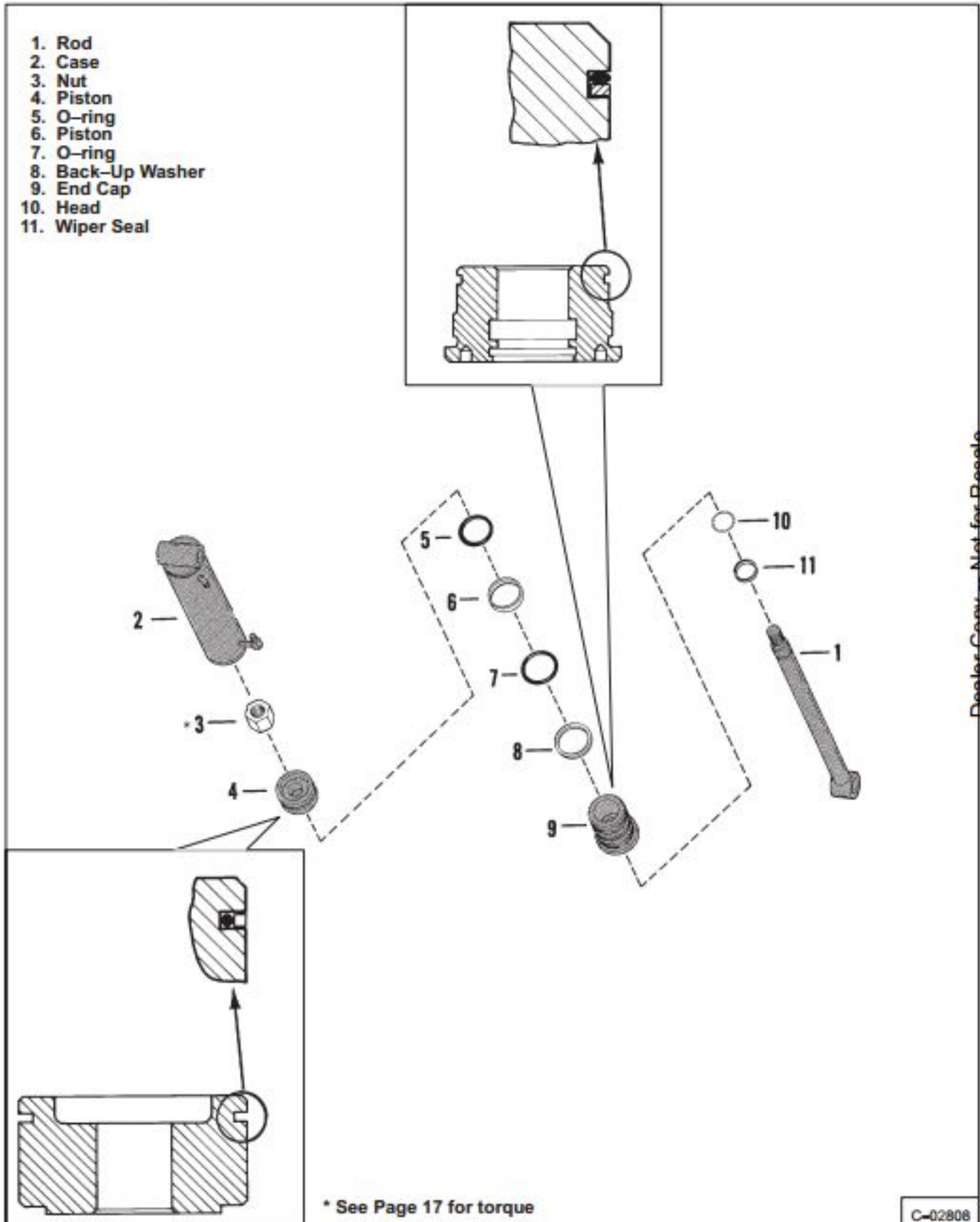
### TORQUE SPECIFICATIONS

Aluminum Piston .....	17
Gray Iron Piston .....	17

# CYLINDER IDENTIFICATION (Cont'd)

Tilt Cylinder Components on 540, 640, 740\* Series & 843  
(\* Not Equipped With Cushion Sleeve)

- 1. Rod
- 2. Case
- 3. Nut
- 4. Piston
- 5. O-ring
- 6. Piston
- 7. O-ring
- 8. Back-Up Washer
- 9. End Cap
- 10. Head
- 11. Wiper Seal



\* See Page 17 for torque

C-02908



Thank you very much  
for your reading.  
Please click here  
to get more information.