

544K 4WD Loader (SN. D000001-001000) Diagnostic



OPERATION AND TEST MANUAL

4WD Loaders models 544K (PIN: 1BZ544K*D000001-001000)**

TM13142X19 04 MAR 16 (ENGLISH)

For complete service information also see:

544K 4WD Loader Repair	TM13144X19
JLink (MTG) Technical Manual	TM114519
PowerTech E 4.5 and 6.8L Diesel Engines Level 16 Electronic Fuel System With Denso HPCR	CTM502
TMIV1200 - 1400 Series Inboard Planetary Axles	CTM442
120 Series Hydraulic Cylinders	CTM120519
PowerTech 4.5L & 6.8L Diesel Engine 3/Stage IIIA, Tier 3/Stage IIA Tier 3/Stage III,	

PDF



DOWNLOAD



Table of contents

FOREWORD

MANUAL IDENTIFICATION—READ THIS FIRST!

Section 9000 - GENERAL INFORMATION

Group 01 - Safety

Section 9001 - DIAGNOSTICS

Group 10 - Engine Control Unit (ECU) Diagnostic Trouble Codes
Group 20 - Transmission Control Unit (TCU) Diagnostic Trouble Codes
Group 30 - Vehicle Control Unit (VCU) Diagnostic Trouble Codes
Group 40 - Sealed Switch Module (SSM) Diagnostic Trouble Codes
Group 50 - Advanced Display Unit (ADU) Diagnostic Trouble Codes
Group 60 - Radar Object Detection (ROD) Diagnostic Trouble Codes
Group 70 - Ground Speed Radar (RDR) Diagnostic Trouble Codes

Section 9005 - OPERATIONAL CHECKOUT PROCEDURE

Group 10 - Operational Checkout Procedure

Section 9010 - ENGINE

Group 05 - Theory of Operation
Group 15 - Diagnostic Information
Group 25 - Tests

Section 9015 - ELECTRICAL SYSTEM

Group 05 - System Information
Group 10 - System Diagrams
Group 15 - Sub-System Diagnostics
Group 16 - Monitor Operation
Group 20 - References

Section 9020 - POWER TRAIN

Group 05 - Theory of Operation
Group 15 - Diagnostic Information
Group 20 - Adjustments
Group 25 - Tests

Section 9025 - HYDRAULIC SYSTEM

Group 05 - Theory of Operation
Group 15 - Diagnostic Information
Group 20 - Adjustments
Group 25 - Tests

Section 9031 - HEATING AND AIR CONDITIONING

Group 05 - Theory of Operation
Group 15 - Diagnostic Information
Group 25 - Tests

Foreword

This manual is written for an experienced technician. Essential tools required in performing certain service work are identified in this manual and are recommended for use.

Live with safety: Read the safety messages in the introduction of this manual and the cautions presented throughout the text of the manual.



CAUTION:

This is the safety-alert symbol. When this symbol is seen on the machine or in this manual, be alert for the potential of personal injury.

Technical manuals are divided in two parts: repair and operation and tests. Repair sections tell how to repair the components. Operation and test sections help to quickly identify the majority of routine failures quickly.

Information is organized in groups for the various components requiring service instruction. At the beginning of each group are summary listings of all applicable essential tools, service equipment and tools, other materials needed to do the job, service parts kits, specifications, wear tolerances, and torque values.

Technical manuals are concise guides for specific machines. They are on-the-job guides containing only the vital information needed for diagnosis, analysis, testing, and repair.

Fundamental service information is available from other sources covering basic theory of operation, fundamentals of troubleshooting, general maintenance, and basic type of failures and their causes.

Manual Identification—READ THIS FIRST!

IMPORTANT:

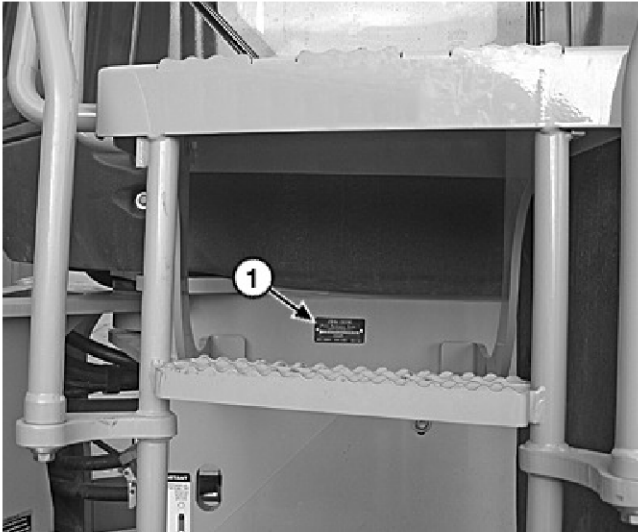
Use only supporting manuals designated for your specific machine. If incorrect manual is chosen, improper service may occur. Verify product identification number (PIN) and engine model number when choosing the correct manual.

Choosing the Correct Supporting Manuals

John Deere four wheel drive (4WD) loaders are available in different machine configurations based on the various markets into which they are sold. Different supporting manuals exist for different machine configurations.

When necessary, product serial numbers and engine model numbers are listed on the front covers of 4WD loader manuals. These numbers are used to identify the correct supporting manual for your machine.

Product Serial Number Identification:



PIN Plate Location



PIN Plate (17 character)

LEGEND:

- 1 PIN Plate
- 2 17 Character PIN

The product identification number (PIN) plate (1) is located on the front, right corner of the cab. Each machine has a 17-character PIN (2) shown on PIN plate.



Thank you very much
for your reading.
Please click here
to get more information.