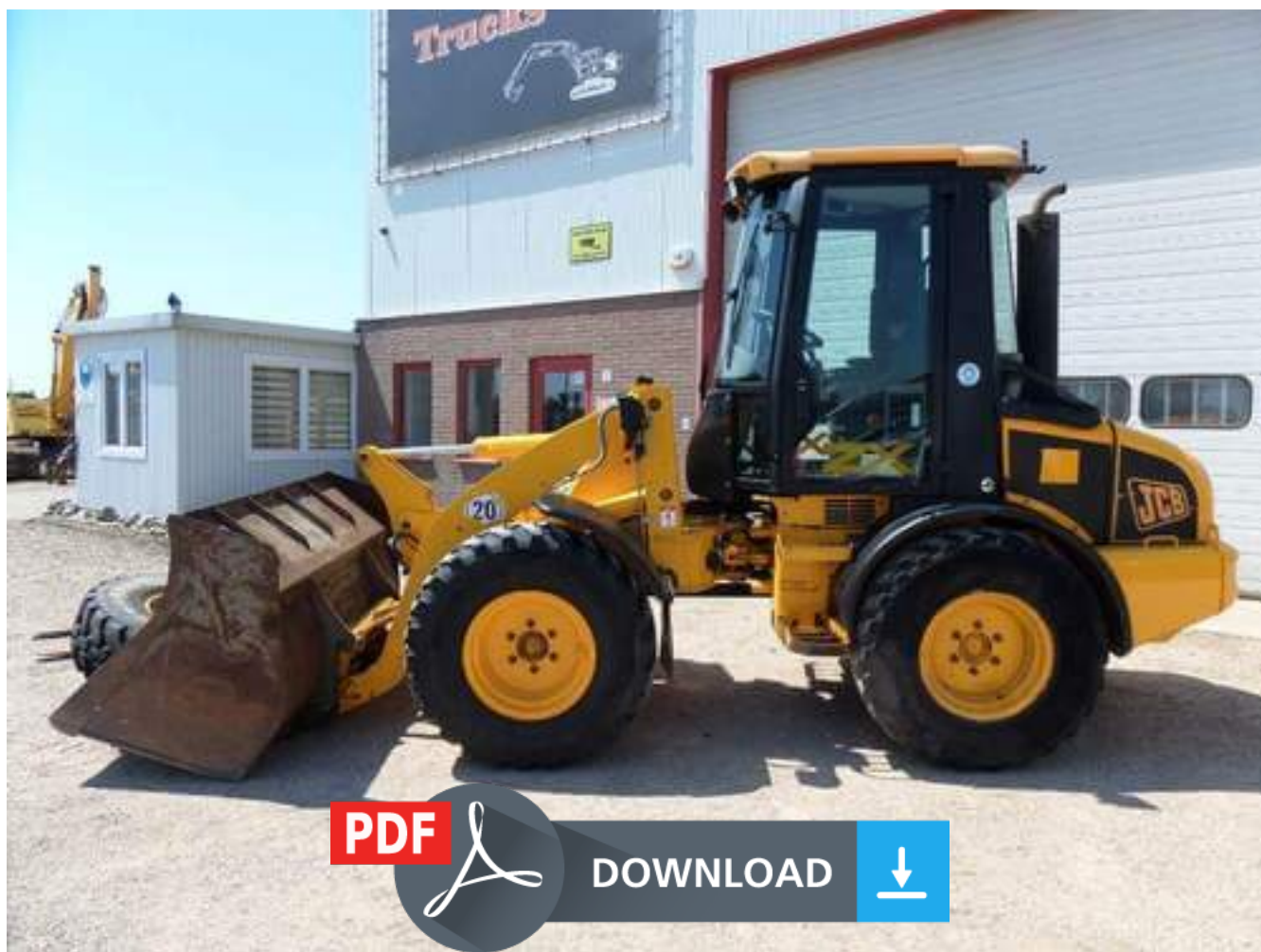


JCB 407B ZX,408B ZX,409B Z,410B ZX,411B ZX Wheel Loader Service Repair Manual



407B ZX, 408B ZX, 409B Z, 410B ZX, 411B ZX

[Section 1 - General Information](#)

[Section 2 - Care and Safety](#)

[Section 3 - Maintenance](#)

[Section B - Body and Framework](#)

[Section C - Electrics](#)

[Section E - Hydraulics](#)

[Section F - Transmission](#)

[Section G - Brakes](#)

[Section H - Hydraulic Steering](#)

[Section K - Engine](#)



Publication No.
9803/4210-08



Copyright © 2008 JCB SERVICE. All rights reserved. No part of this publication may be reproduced, stored in a retrieval system, or transmitted in any form or by any other means, electronic, mechanical, photocopying or otherwise, without prior permission from JCB SERVICE.

Issued by JCB Technical Publications, JCB Aftermarket Training, Woodhouse, Rotherham, South Yorkshire, S71 1BN, England. Tel: +44 1909 561320 Fax: +44 1909 561322

World Class
Customer Support

Greasing

⚠ WARNING

Make the machine safe before working underneath it. Park the machine on level ground and lower the attachments, (if it is necessary to work with the loader arms raised, then the loader arm safety strut must be fitted). See Loader Arm Safety Strut in MAINTENANCE section. Engage the park brake, put the transmission in neutral and stop the engine. Block both sides of all four wheels. If you are working near the articulation danger zone, fit the articulation safety lock. See Articulation Lock in MAINTENANCE section.

4-3-4_1

Loader Arm Pivot Points

Total of 13 grease points

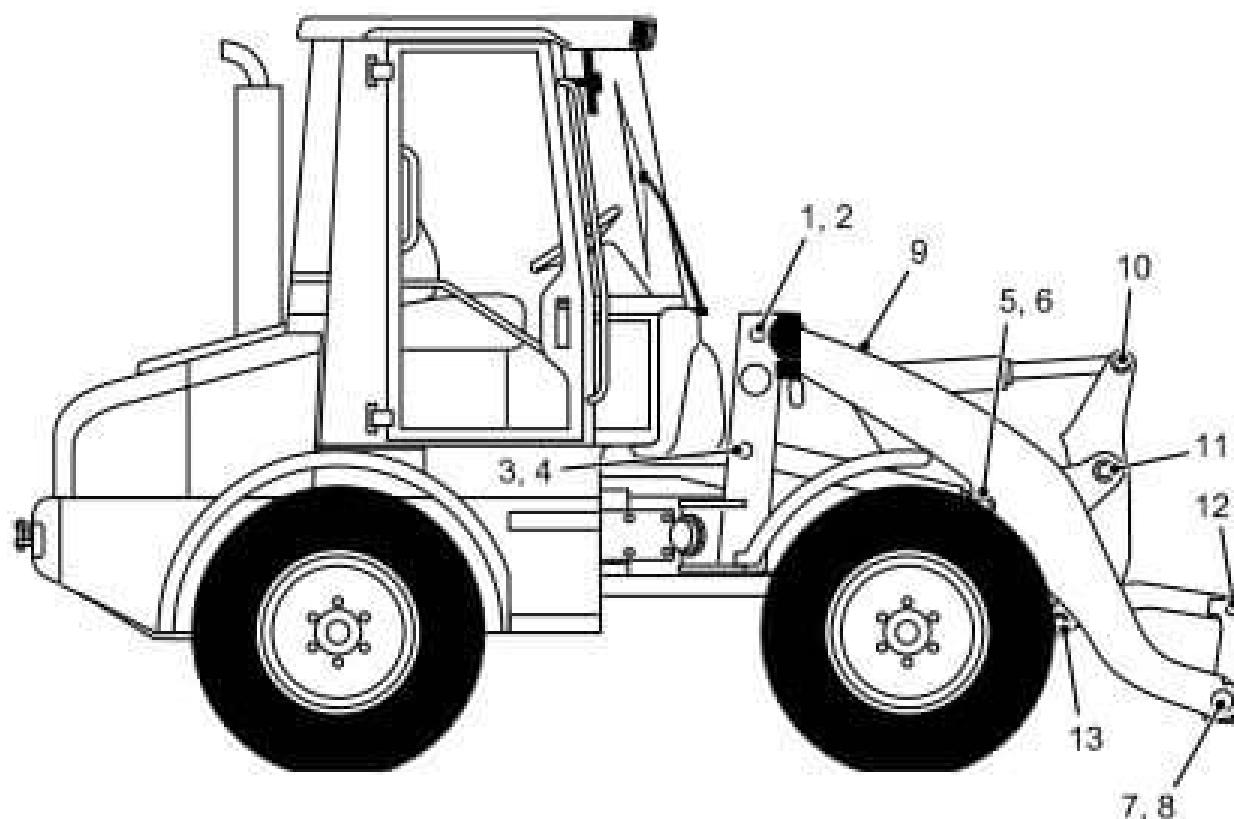


Fig 1.

The machine must be greased regularly to keep it working efficiently. Regular greasing will also increase the machine's working life.

Grease should be applied with a grease gun, normally two strokes of the gun should be sufficient. Stop the greasing procedure when fresh grease appears at the joint. Use the recommended grease. [↪ Lubricants and Capacities \(D 3-1\)](#).

In the following illustrations, the grease points are numbered. Count off the grease points as you apply grease to each one. Refit the dust caps after greasing.

- 10 Fit spring 10-K and new gasket 10-D. Fit cover plate 10-C and tighten screws 10-B to 7 Nm (5 lbf ft).
- 11 Check the hydraulic fluid level and top up if necessary.

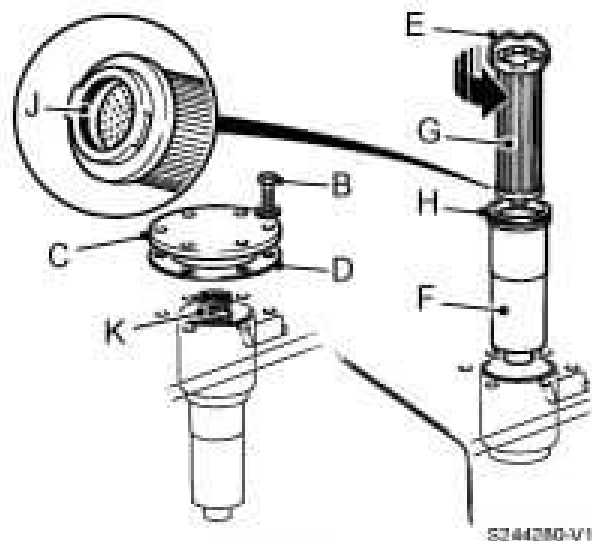


Fig 10.

Checking the Hydraulic Oil Filter Pressure

- 1 Park the machine on level ground and lower the attachments to the ground.
- 2 Put the transmission in neutral and engage the parking brake.
- 3 Open the engine cover.
- 4 With the oil at normal working temperature, the gauge should indicate between zero and three bar (0 - 3).

Note: If the indication is above three (3), the filter by-pass is open and therefore the oil will be unfiltered. Do not continue until the hydraulic oil filter has been replaced.

Note: Before the oil has reached normal working temperature, it is normal for the gauge to indicate above three (3).

- 5 Close the engine cover.

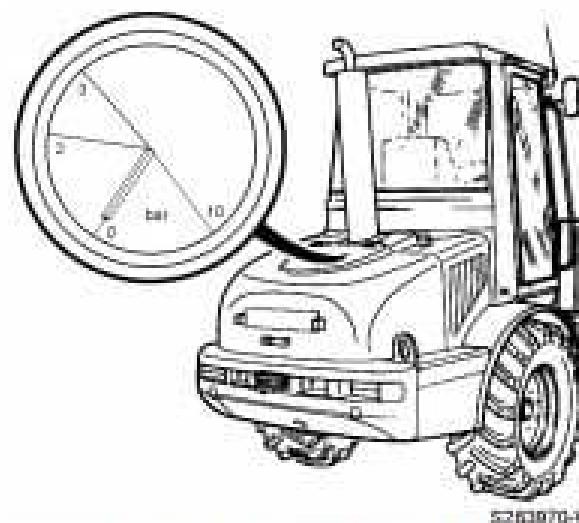


Fig 11. 407B ZX, 408B ZX 409B ZX

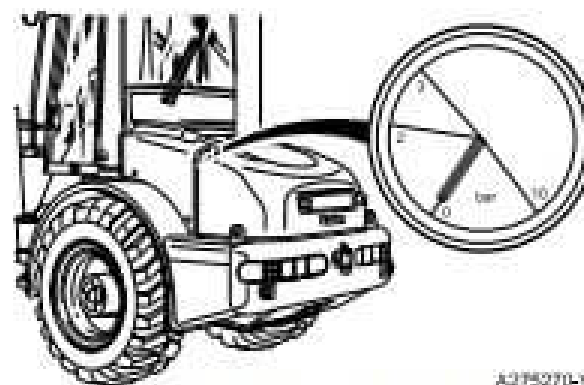


Fig 12. 410B ZX, 411B ZX

⚠ WARNING

Fluid Under Pressure

Fine jets of fluid at high pressure can penetrate the skin. Keep face and hands well clear of fluid under pressure and wear protective glasses. Hold a piece of cardboard close to suspected leaks and then inspect the cardboard for signs of fluid. If fluid penetrates your skin, get medical help immediately.

INT-3-1-10



Thank you very much
for your reading.
Please click here
to get more information.