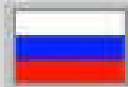


JCB 801.4,801.5,801.6 Mini Excavator Service Repair Manual





Backhoe Loader

[Section 1 - General Information](#)

[Section 2 - Care and Safety](#)

[Section 3 - Maintenance](#)

[Section A - Attachments](#)

[Section B - Body and Framework](#)

[Section C - Electrics](#)

[Section D - Controls](#)

[Section E - Hydraulics](#)

[Section F - Transmission](#)

[Section G - Brakes](#)

[Section H - Steering](#)

[Section K - Engine](#)

[Section L - Servo Controls](#)



Publication No.
9803/3290-16



Copyright © 2004 JCB SERVICE. All rights reserved. No part of this publication may be reproduced, stored in a retrieval system, or transmitted in any form or by any other means, electronic, mechanical, photocopying or otherwise, without prior permission from JCB SERVICE.

Issued by JCB Technical Publications, JCB Information Training, Woodhouse, Rossington, S714 3BN, England. Tel: +44 1909 541322 Fax: +44 1909 541323

World Class
Customer Support

Prepare the Machine for Maintenance

- 3 Release the strut.
 - a Release fastener A.
 - b Remove strut C from its stowage bracket.
- 4 Install the strut.
 - a Push strut C over the ram piston rod.
 - b Secure the strut in position with strap B.
- 5 Lower the arm onto the strut.

To prevent any chance of the loader arms creeping down and trapping your fingers, the loader arms should be carefully lowered onto the safety strut as shown.

Start the engine and slowly lower the loader arms onto the safety strut, stop the movement immediately the weight of the loader arms is supported by the safety strut.

Note: When lowering the loader, operate the control lever carefully. 'Feather' the lever to lower the loader very slowly.

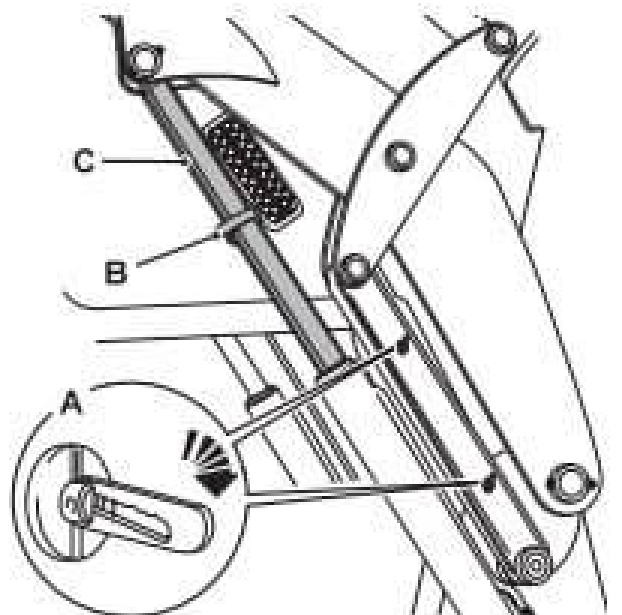


Fig 1.

C001160-1

Removing the Loader Arm Safety Strut

- 1 Fully raise the loader arms to take the weight off the safety strut.
- 2 Stop the engine and remove the starter key.
- 3 Remove the strut.
 - a Undo the strap B.
 - b Remove the strut C from the ram piston rod.
- 4 Stow the strut.

Secure the strut in its stowage position with fastener A.

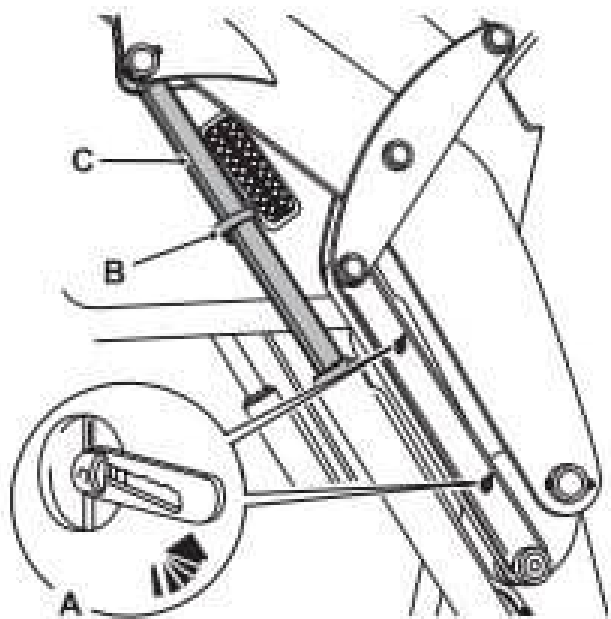


Fig 2.

Fig 3.

C001160-2

ROPS/FOPS Structure

Checking The ROPS/FOPS Structure

⚠ WARNING

You could be killed or seriously injured if you operate a machine with a damaged or missing ROPS/FOPS. If the Roll Over Protection Structure (ROPS)/Falling Objects Protection Structure (FOPS) has been in an accident, do not use the machine until the structure has been renewed. Modifications and repairs that are not approved by the manufacturer may be dangerous and will invalidate the ROPS/FOPS certification.

INT-3-1-8_8

Check the structure for damage. Check that the mounting bolts are installed and undamaged. Check the bolt torques. → [Torque Settings \(D 3-22\)](#). Tighten them to the correct torque if necessary.

- 1 Remove the rear wheels to gain access to the rear mounting bolts A.
- 2 Remove the covers C and external trim panels D to gain access to the front mounting bolts B.

Table 2. Torque Settings

Bolts A and B	205 Nm (150 lbf ft)
---------------	---------------------

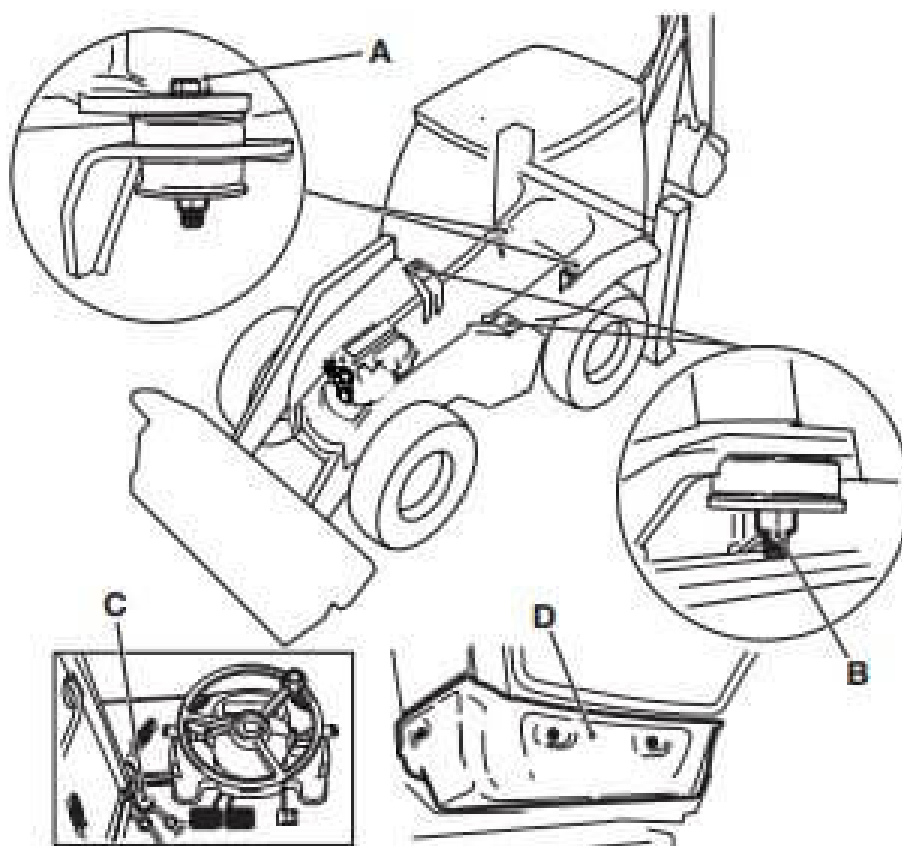


Fig 8.



Thank you very much
for your reading.
Please click here
to get more information.