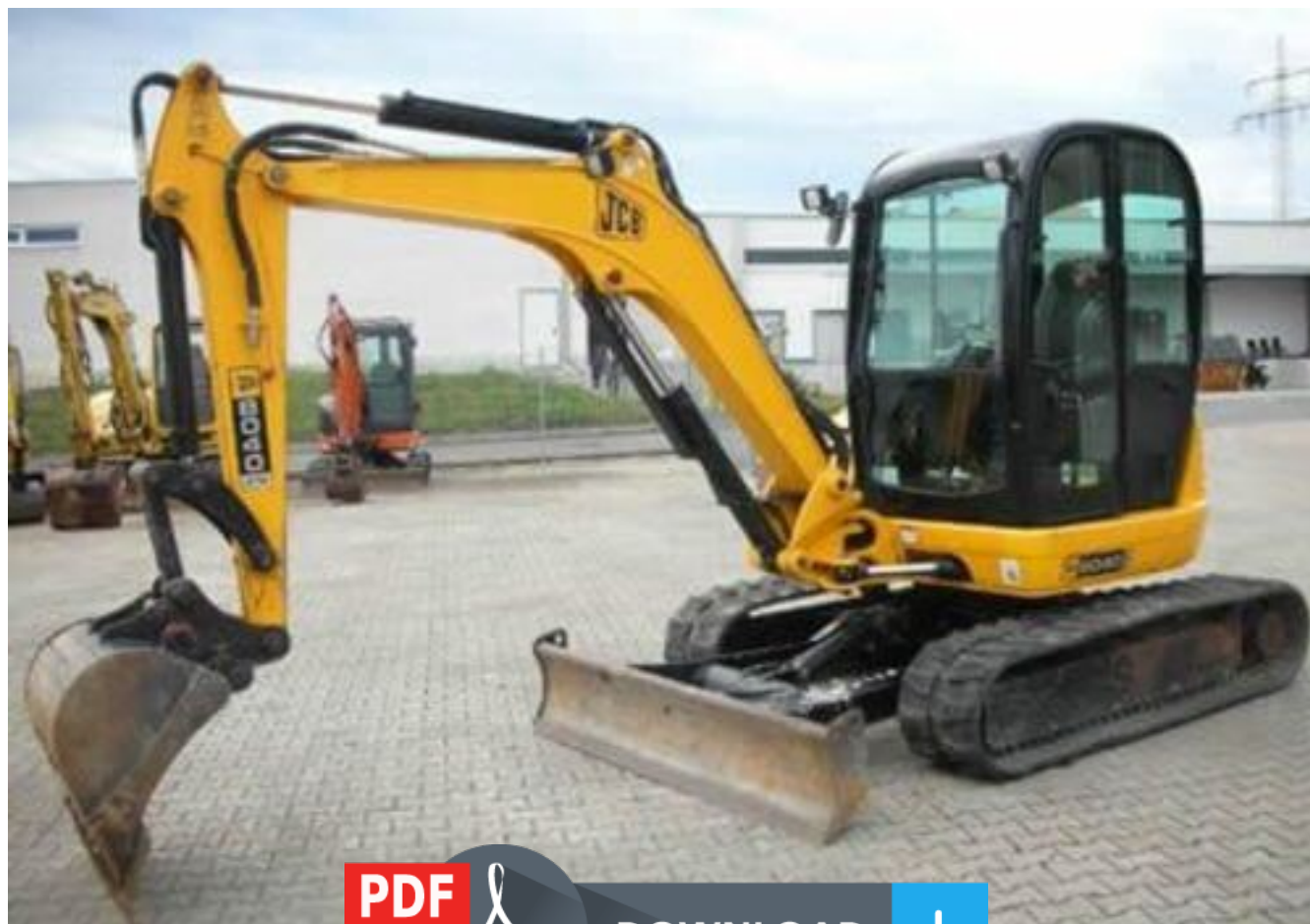


JCB HTD5 Tracked Dumpster Service Repair Manual



PDF



DOWNLOAD



8040Z, 8045Z

Service Manual - 8040Z, 8045Z

[Section 1 - General Information](#)

[Section 2 - Care and Safety](#)

[Section 3 - Maintenance](#)

[Section A - Attachments](#)

[Section B - Body and Framework](#)

[Section C - Electrics](#)

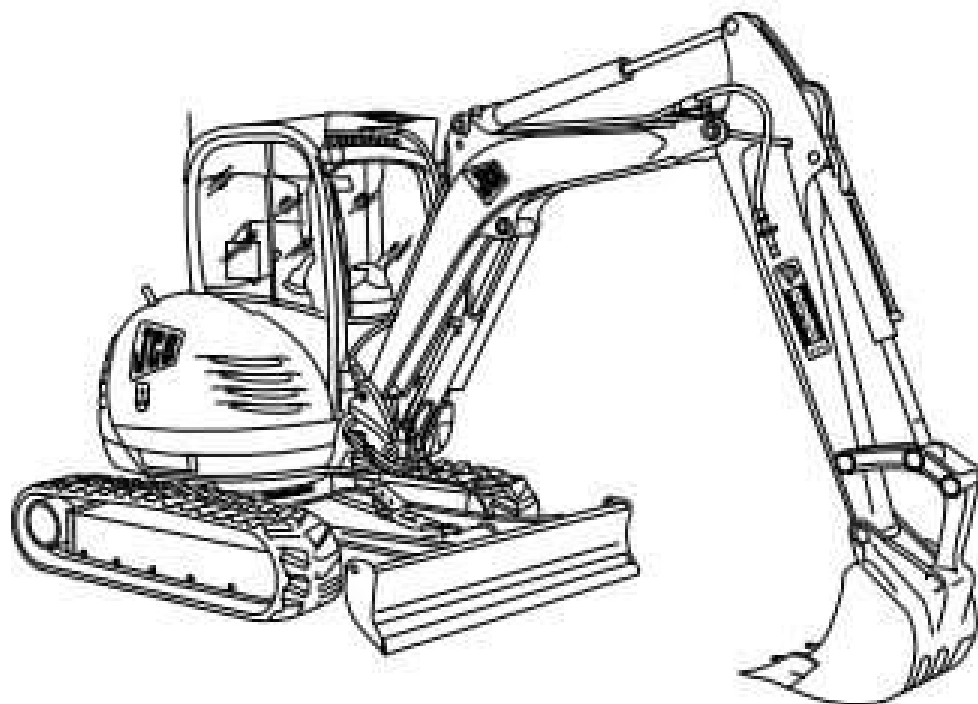
[Section D - Controls](#)

[Section E - Hydraulics](#)

[Section F - Gearboxes](#)

[Section J - Track and Running Gear](#)

[Section K - Engine](#)



Publication No.
9803/9360-3



Copyright © 2001 JCB SERVICES. All rights reserved. No part of this publication may be reproduced, stored in a retrieval system, or transmitted in any form or by any other means, electronic, mechanical, photocopying or otherwise, without prior permission from JCB SERVICES.

Issued by JCB Technical Publications, JCB Aftermarket Training, Wrotham, Royston, Hertfordshire, SG11 3BN, England. Tel +44 1899 591300 Fax +44 1899 591100

World Class
Customer Support

Every 50 Hours

Slew Ring Bearings

⚠ WARNING

Do not overgrease the slew ring as this will result in the displacement of the grease seal.

8-3-3-35

Ensure the slew ring is kept full of grease.

Slew the machine 90° across the tracks. Locate the grease points (forward and aft) on the slew ring. To ensure full distribution of the grease, use the following procedure.

- 1 Grease in, using 4 strokes of the grease gun. Rotate 180°.
- 2 Grease in, using 4 strokes of the grease gun. Rotate 180°.
- 3 Grease in using 4 strokes of the grease gun.

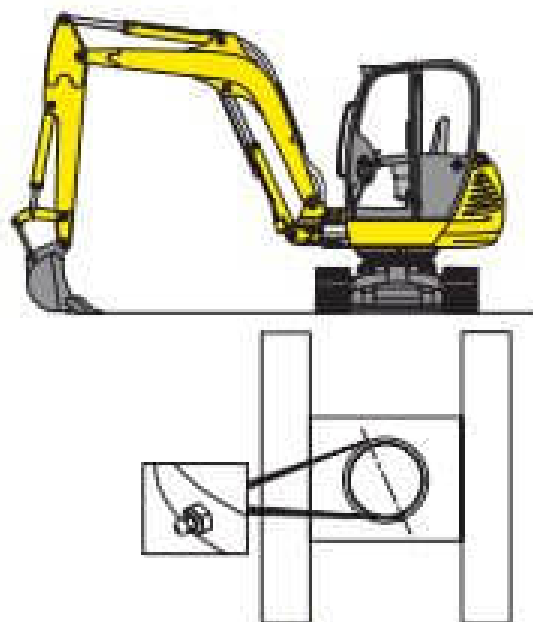


Fig 2.

Every 1000 Hours

Slew Ring Gear Teeth

⚠ WARNING

Slew Pinion Grease

JCB Slew Pinion Grease is harmful as it contains bitumen compounds 2811. Excessive contact may lead to dermatitis or skin cancer. Always use a barrier cream or wear gloves; wash contaminated skin thoroughly with soap and water. In the event of eye contact, immediately wash with plenty of water and seek medical advice.

8-1-1-7

⚠ WARNING

Soft Ground

A machine can sink into soft ground. Never work under a machine on soft ground.

INT-3-3-4

⚠ WARNING

Jacking

A machine can roll off jacks and crush you. Do not work under a machine supported only by jacks.

8-3-5-7

- 1 Raise the machine and support the undercarriage.
- 2 Stop the engine and remove the starter key.
- 3 Remove bolts **A** and plate **B** in the underside of the undercarriage. ➔ [Fig 3. \(D 3-24\)](#)
- 4 Apply the grease to the pinion using the applicator. ➔ [Fluids, Lubricants and Capacities \(D 3-11\)](#).
- 5 Start the engine and rotate the mainframe fully twice.
- 6 Stop the engine and remove the key.

Checking the Drive Chain Tension

Park the machine on a level surface, but do not engage the park brake. Stop the engine and remove the starter key. Set the forward/reverse lever to Neutral and set the differential lock to OFF.

Use safe lifting equipment to raise the machine far enough to block the wheels clear of the ground.

Raise the load bay.

Do the following for both chains:

- 1 Rotate the rear wheels towards each other to bring all the chain slack to the top.
- 2 Position a straight edge across the tops of the two drive sprockets, then measure the gap 19-X between the top of the chain (at its lowest point) and the bottom of the straight edge. The gap should be 20 - 25 mm (0.75 - 1 in).

Adjust if necessary, ([↩ Adjusting the Drive Chain Tension \(D 3-31\)](#)).

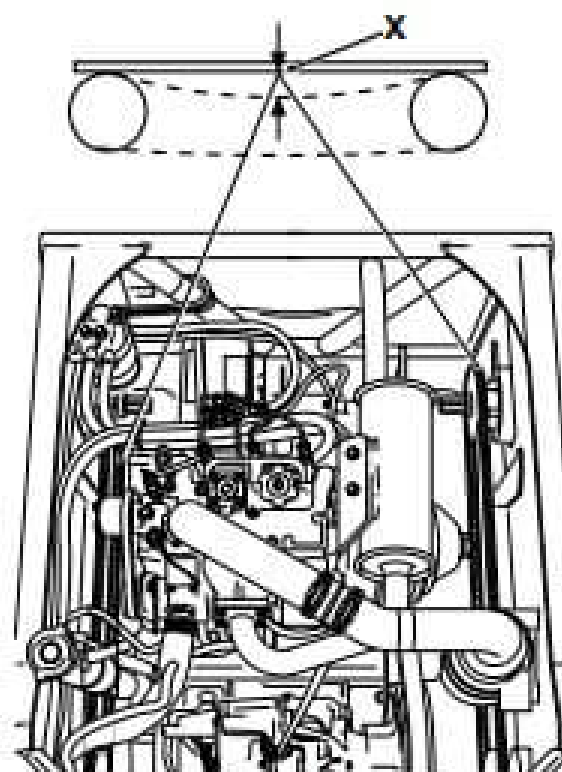


Fig 19.



Thank you very much
for your reading.
Please click here
to get more information.