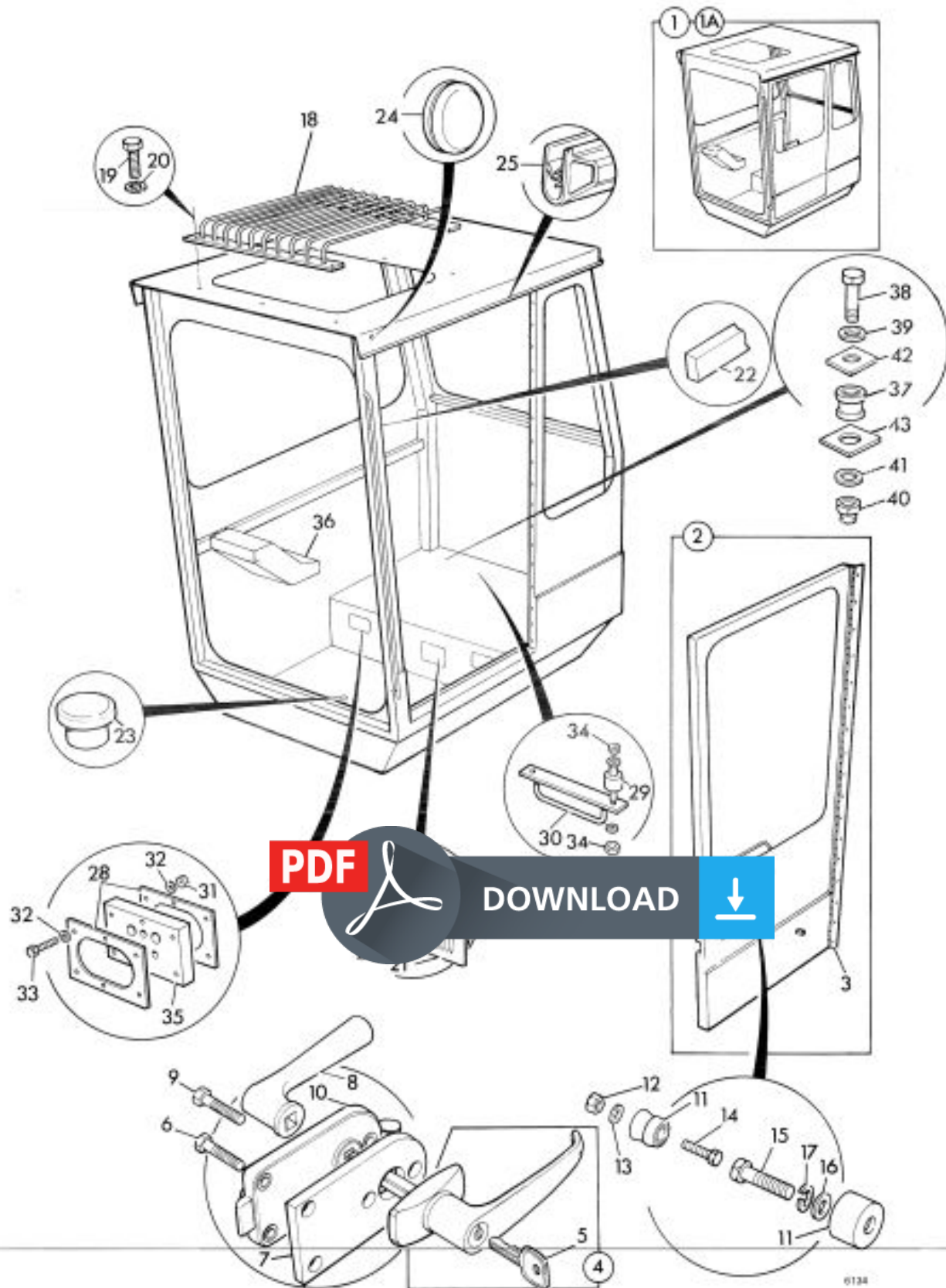
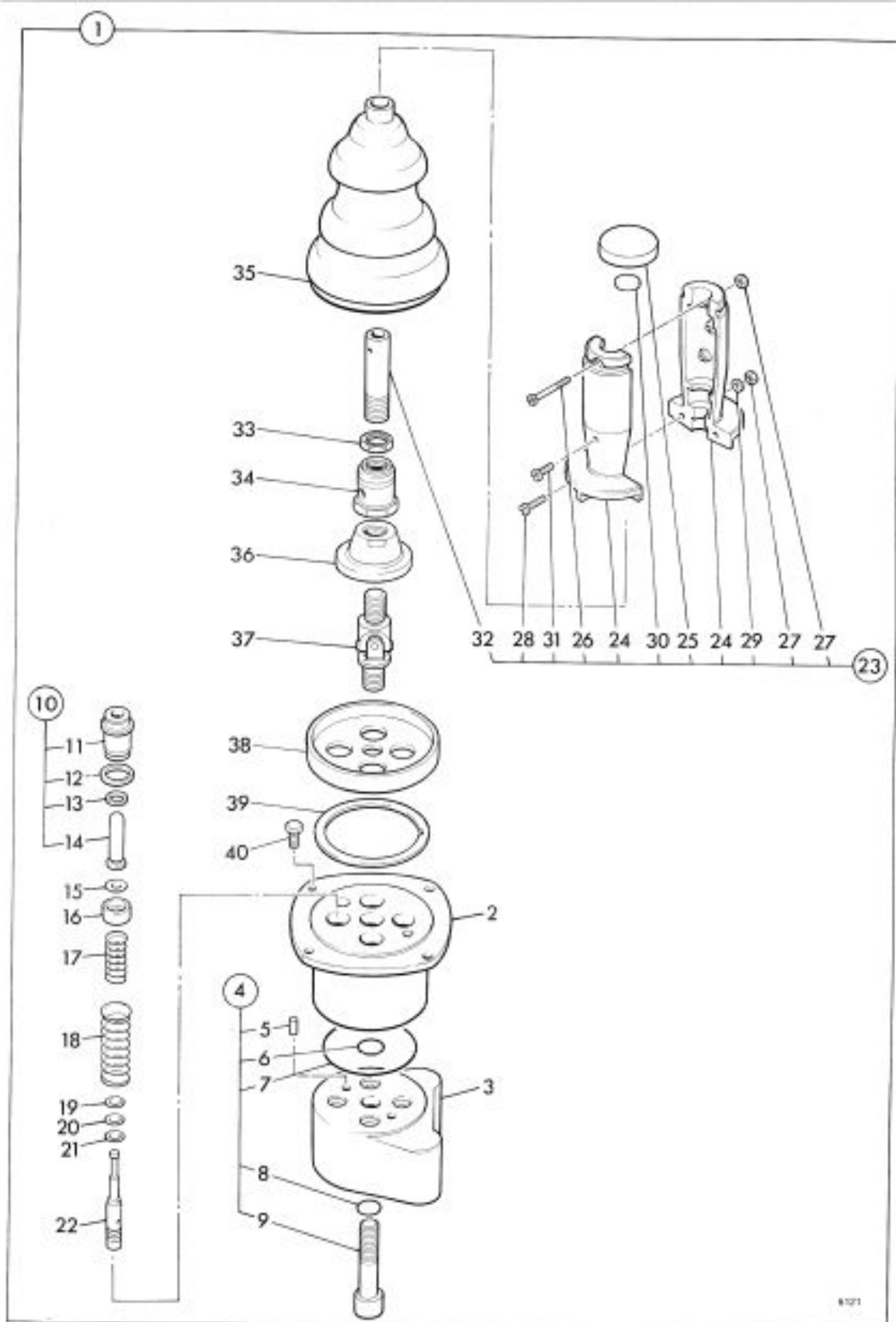


ITEM PART No.

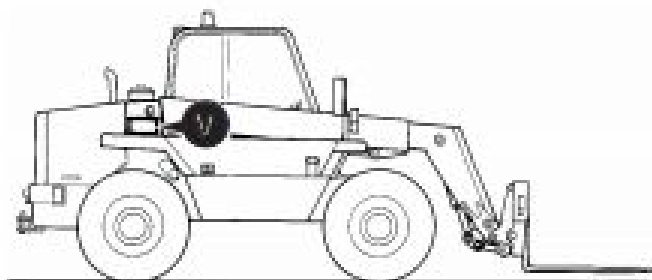


1	208/46300
1A	208/46600
2	208/40500
3	
4	208/43700
5	106/14503
6	1360/0208
7	208/38201
8	110/40201
9	1360/0211
10	208/41800
11	826/00551
12	1370/0103
13	1412/0001
14	1315/0208
15	1315/0207
16	1420/0006
17	1425/0006
18	208/41900
19	1305/0103
20	1416/0005
21	257/19201
22	926/02300
23	835/00020
24	2410/1003
25	926/02200
26	1414/0011
27	1360/0204
28	208/46202
29	206/50422
30	208/47300
31	1350/0103
32	1410/0002
33	1305/3116
34	1340/0103
35	208/46203
36	See Page 1



Identification Plate

Your machine has an identification plate **V** mounted as shown. The serial numbers of the machine and its major units are stamped on the plate.



S195340

Explanation of Vehicle Identification Number (VIN)

SLP504BRE0277001

A B C D E

A	World Manufacturer Identification	SLP = JCB
B	Machine Model	504B
C	Year of Manufacture	S
	P = 1993	V = 1997
	R = 1994	W = 1998
	S = 1995	X = 1999
	T = 1996	Y = 2000
D	Manufacturing Location	E = England
E	Machine Serial Number	0277001

Machine Model Explanation

504B
F G

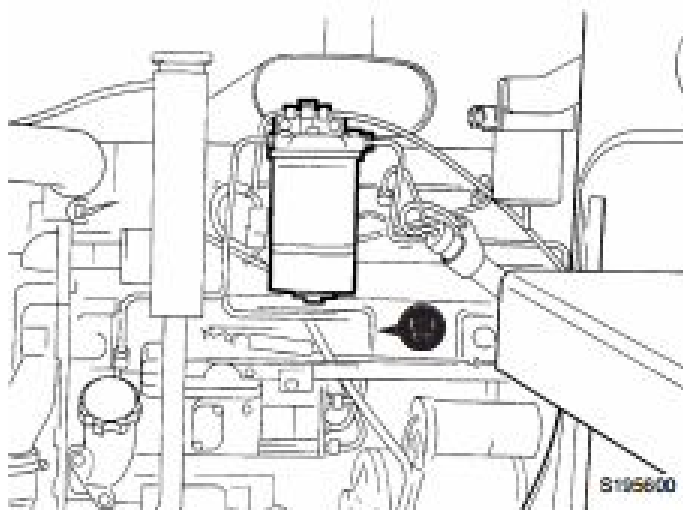
- F** 500 Series machine range
- G** 4,000 lbs lift capacity

The serial number of each major unit is also stamped on the unit itself. If a major unit is replaced by a new one, the serial number on the identification plate will be wrong. Either stamp the new number of the unit on the identification plate, or simply stamp out the old number. This will prevent the wrong unit number being quoted when replacement parts are ordered.

The machine and engine serial numbers can help identify exactly the type of equipment you have.

Unit Identification

The engine serial number is stamped on a label **W** which is fastened to the right side of the cylinder block, near the fuel filter.



S195600

Typical Engine Identification Number

AA 50261 U 500405 P
A B C D E

- A** Engine Type
AA = 4 cylinder naturally aspirated
AB = 4 cylinder turbo
- B** Build Number
- C** Country of Origin
- D** Engine Sequence Number
- E** Year of Manufacture

When working on a Loadall the machine must be made safe before carrying out any servicing.

General Safety

Read Section 2, Care and Safety.

Position the machine on firm level ground. Apply the parking brake.

Chock both sides of all four wheels.

Make sure the transmission selector and gear lever are in the neutral position.

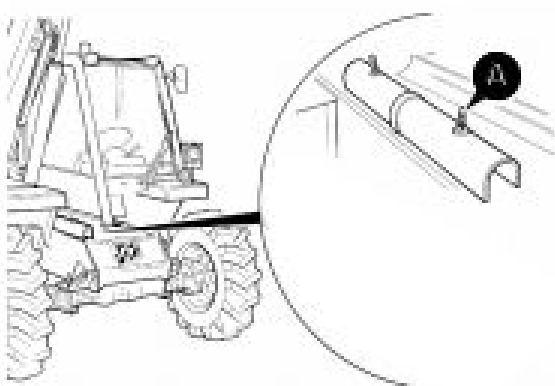
Fully retract the boom and lower to the ground.

Switch OFF the engine and remove the starter key.

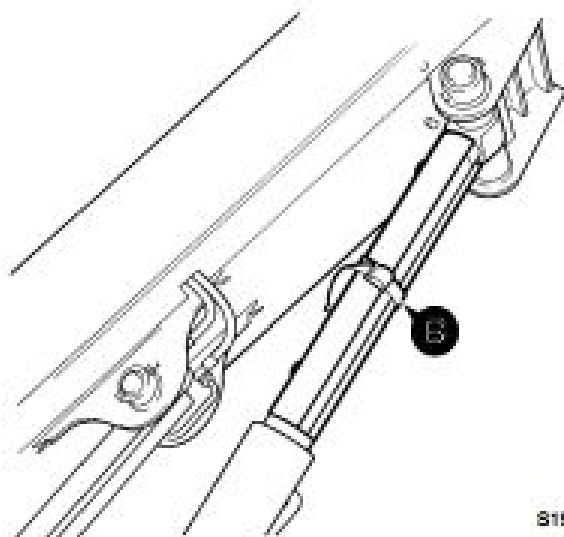
Operate the controls to vent residual pressure.

Release the hydraulic tank filler cap to release residual tank pressure.

When welding electrically disconnect the alternator.



S195470



S195740

Working with Boom Raised

Carry out General Safety and the following procedure:

⚠ WARNING

You could be killed or injured if the boom drops while you are working under it. Install the safety strut as instructed below before doing any maintenance work with the boom raised.

S-3-1-2

Before fitting the safety strut remove any load on the forks and empty buckets or attachments.

Fully retract the boom (unless it needs to be extended for maintenance). Raise the boom just far enough to install the strut.

Make sure the parking brake is engaged and the transmission is in neutral. Switch OFF the engine and remove the starter key.

⚠ CAUTION

You will have to climb onto the machine to fit or remove the safety strut. Take care, especially if the machine is wet. Remove mud and oil before climbing onto the machine.

S-3-1-11

⚠ WARNING

You could be killed or injured if the boom is lowered while you are under it. Keep people away from the machine while you fit the strut.

S-3-1-3

Remove the strut from its stowage position A.

Place the strut around the ram piston rod as shown. Fix it in place with strap B.

The strap fitted to the safety strut must be in a serviceable condition, if not fit a new strap.

To prevent any chance of the boom creeping down and trapping your fingers, the boom should be lowered onto the strut.

Note: Lower the boom carefully, to prevent possible damage to the strut. Stop as soon as the weight of the boom is on the strut.



Thank you very much
for your reading.
Please click here
to get more information.