

JCB JZ140 Tracked Excavators Service Repair Manual





Side Engine Loadalls

[Section 1 - General Information](#)

[Section 2 - Care and Safety](#)

[Section 3 - Routine Maintenance](#)

[Section B - Body and Framework](#)

[Section C - Electrics](#)

[Section E - Hydraulics](#)

[Section F - Transmission](#)

[Section G - Brakes](#)

[Section H - Steering](#)

[Section K - Engine](#)

[Section M - Electronic Data Systems](#)



Publication No.
9803/3760-05



Copyright © 2001 JCB SERVICE. All rights reserved. No part of this publication may be reproduced, stored in a retrieval system, or transmitted in any form or by any other means, electronic, mechanical, photocopying or otherwise, without your permission from JCB SERVICE.

Issued by JCB Technical Publications, JCB Aftermarket Training, Villanova, Rocester, Staffordshire, ST13 9JH, England. Tel: +44 1889 991325 Fax: +44 1889 991322

World Class
Customer Support

Every 50 Hours

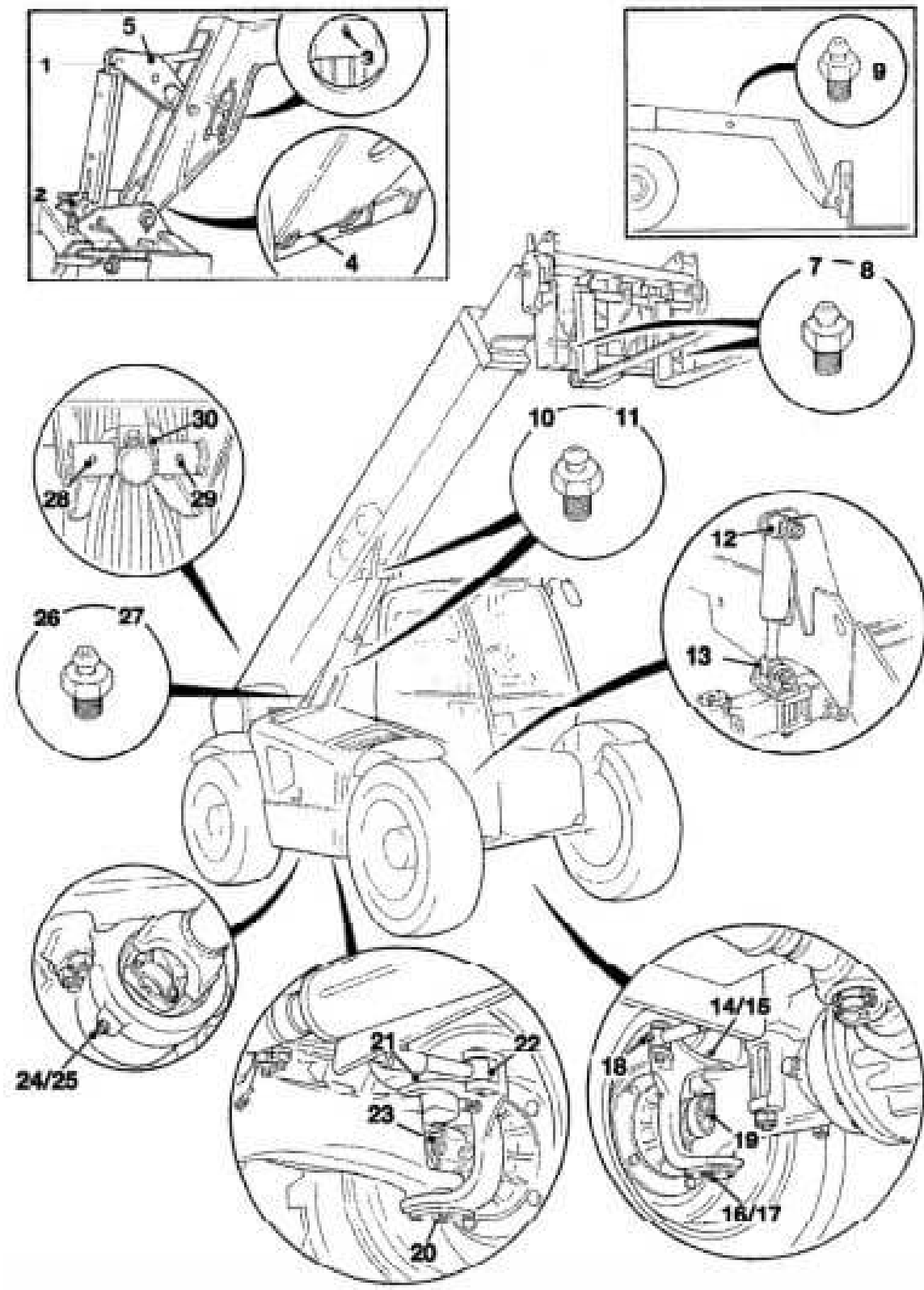


Fig 1. 531-70, 536-70, 541-70

3881-C

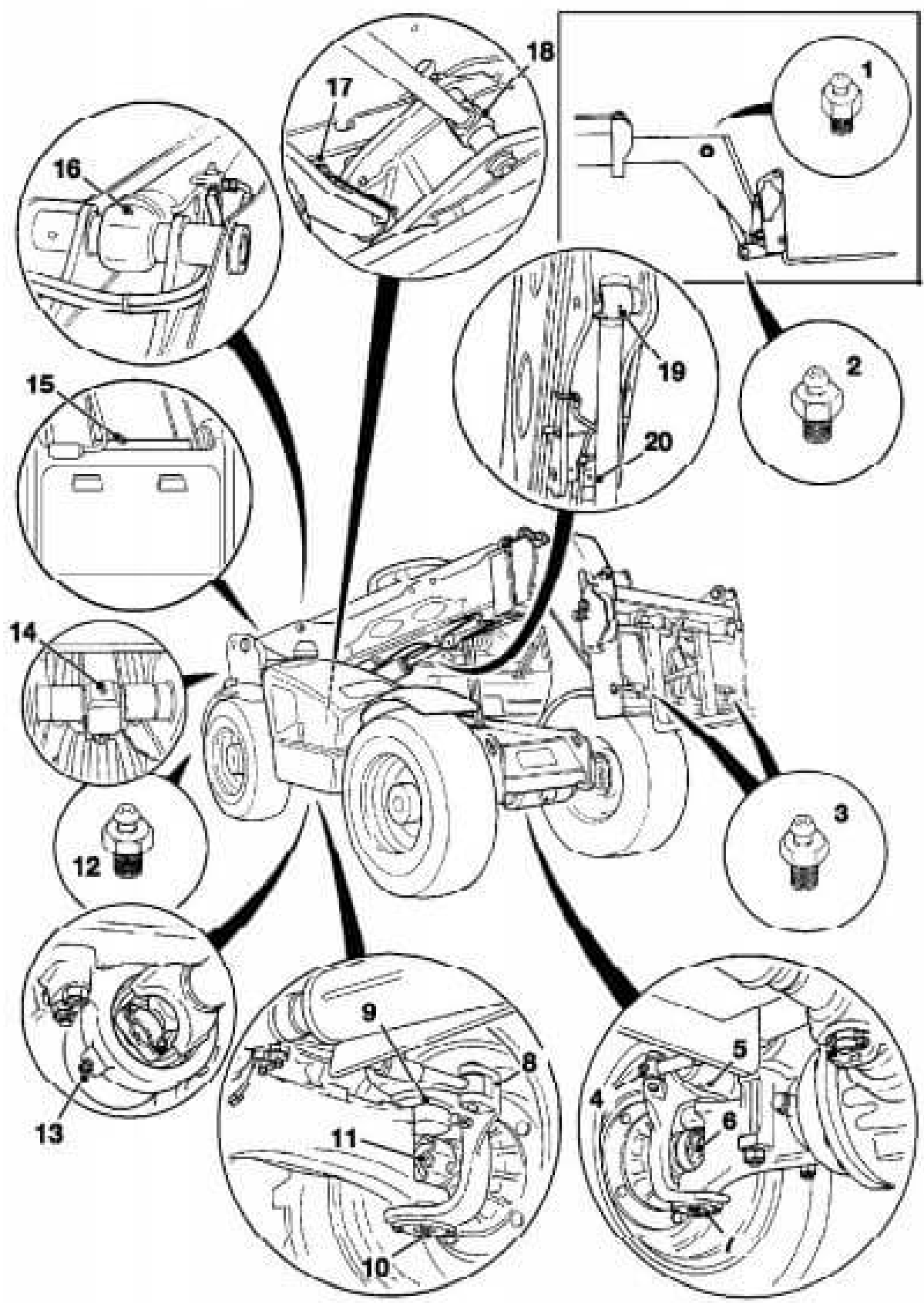


Fig 2. 533-105, 535-95

36276-01

Note: 533-105: [Fig 3.](#) ([D 3-9-5](#)).



Thank you very much
for your reading.
Please click here
to get more information.