

KOBELCO

OPERATOR'S MANUAL

HYDRAULIC EXCAVATOR

SK100

PDF



DOWNLOAD



SK120

SK120LC

Applicable: SK100 YW04601~
Applicable: SK120 LP08001~
Applicable: SK200LC YP01801~
S2LP1012E-00 10/91

REQUESTS FROM THE MANUFACTURER

● WARRANTY

The machine is guaranteed according to the manufacturer's Warranty Certificate. The manufacturer will repair, free of charge, such malfunctions and faults for which the manufacturer is deemed responsible by this Warranty Certificate. Kobelco is not responsible for malfunctions and faults caused by negligence or failure to follow instructions given in the operation manual.

● PERIODICAL INSPECTION SERVICE

After delivery of this machine, we will make periodical service inspections. These inspections will be free of charge and at intervals and for a period we set. For questions about service which the user may receive, contact your designated service shop, distributor, or the manufacturer, directly.

● ENGINE

The operating instructions for the engine are given in Chapter 4 and should be read carefully before operating the machine.

● EXPLANATION OF SPECIAL SYMBOLS

The following symbols are used in this operation manual to indicate important safety messages or to show points of additional information.



—— A safety warning sign shows important items of safety.



—— Shows additional information helpful to the operator.

● NOTICE TO THE USER

Please note that the contents of this manual may differ from the specifications of the machine we deliver. If any question arises as to the contents of this manual, feel free to contact the manufacturer, our dealer, or a designated service shop.

We thank you for purchasing our KOBELCO product. This operation manual is based on the ample experience and expertise we have accumulated over many years. It contains many helpful instructions for the user who operates this machine.

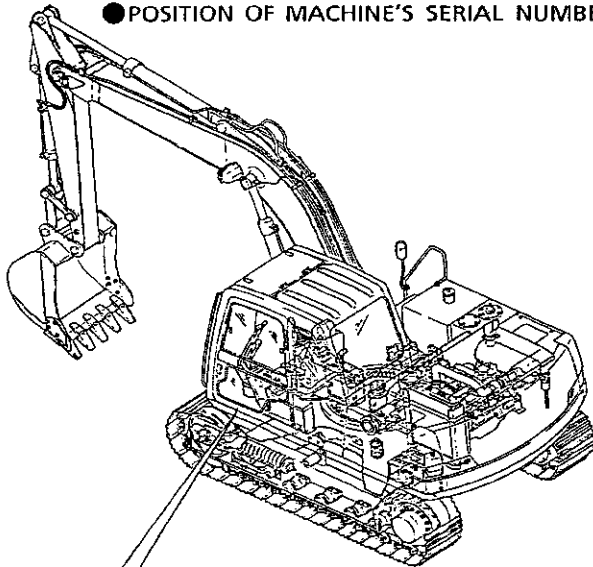
● Please read this operation manual thoroughly. This will help you to utilize the machine efficiently and economically!
 Those users who are familiar with the operation of hydraulic excavators are also requested to read this manual thoroughly to obtain maximum performance from the machine and insure safe operation.

● FOR ORDERING!

For ordering parts and service, inform the distributor of your machine's serial number and engine serial number stamped in the positions shown below on the illustration. For future reference, record these serial numbers in the spaces below:

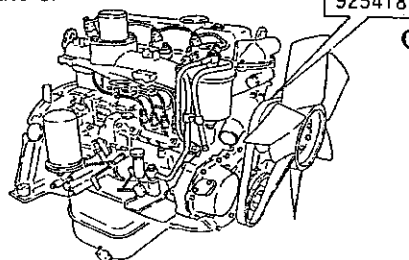
Machine No.	
Engine No.	

● POSITION OF MACHINE'S SERIAL NUMBER



● POSITION OF ENGINE'S SERIAL NUMBER

Lower left-hand side face of cylinder body



OPTIONAL ATTACHMENTS

※ The numbers in the illustrations are for explanation only and differ from actual numbers

Title	Chapter
SAFETY OPERATION	1
OPERATING CONTROLS	2
OPERATION	3
MAINTENANCE	4
TRANSPORTATION	5
REFERENCE DOCUMENTS	6
AIR-CONDITIONER & HEATER	7
TROUBLESHOOTING	8
OPTIONAL ATTACHMENTS	9
INDEX	10



Thank you very much
for your reading.
Please click here
to get more information.