

# John Deere 1050C Crawler Dozer Diagnostic, Operation and Test Service Manual (TM2300)

**1890 50 Ft, 60 Ft, No-Till  
Air Hoe Drill Diagnostic  
and Test**



JOHN HARE



COLLECTION

**DIAGNOSTIC TECHNICAL MANUAL  
1890 50 Ft, 60 Ft, No-Till Air Hoe Drill**

TM144319 01DEC18 (ENGLISH)



John Deere Seeding Group

**Covers:** 1050C

**Type:** Service Manual

**Language:** English

**Pages:** 653

**Format:** PDF

**Features:** Bookmarked, searchable, printable

**Compatibility:** Windows/Mac/Tablet/Mobile

This service manual contains important information for the maintenance, troubleshooting and servicing of the **John Deere 1050C Crawler Dozer Diagnostic, Operation and Test Service Manual (TM2300)**

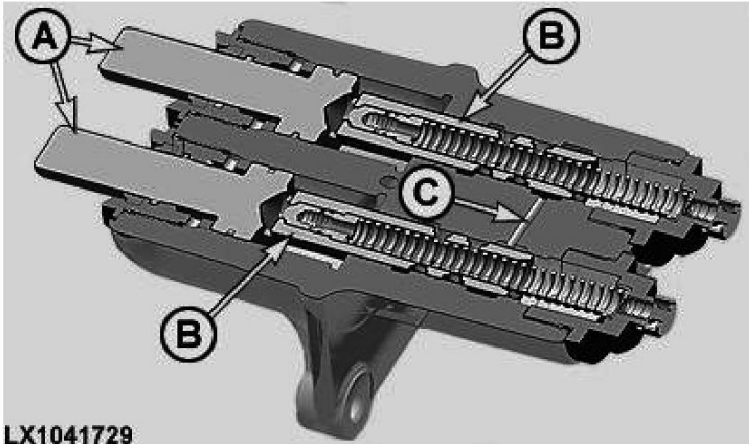
In this manual you will find detailed specifications, illustrations, schematics, diagrams and step-by-step procedures to properly service and diagnose the machine to the manufacturer's standards.

**Contents:**

- General Information
- Specifications
- Serial Number Location
- Engine Specifications
- Engine Diagnostics
- Engine Tests and Adjustments
- Engine Repair
- Power Train
- Transmission
- Axles
- Differential
- PTO
- Hydraulic System
- Electrical System
- Electrical Tests and Diagnostics
- Wiring Diagram / Schematic
- Ignition and Charging
- Steering
- Brakes
- Wheels
- Operator's Platform
- Body Panels
- Disassembly and Assembly
- Diagnostics, Tests and Adjustments
- Troubleshooting
- and much more...

Please note this manual is in **downloadable PDF format only**. If you have any questions about this product or would like to request sample pages, please contact us and reference the product name or SKU.

Pressure Compensation



LX1041729

LX1041729-UN: Position of Hole

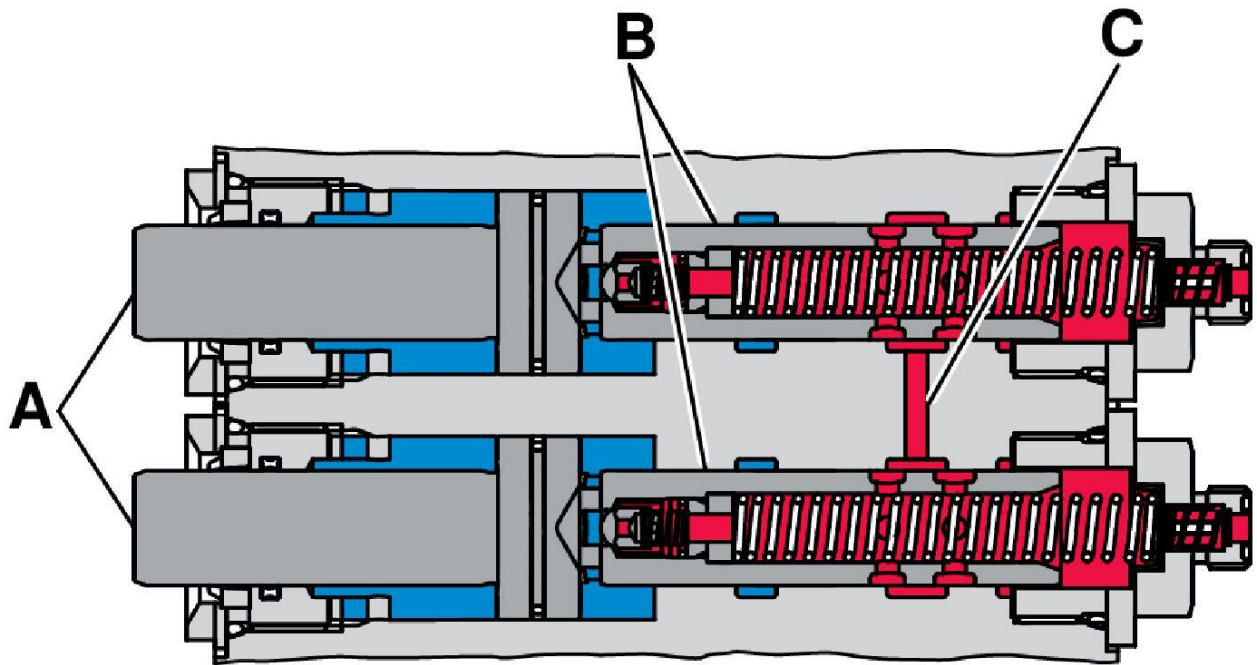
LEGEND:

A-Piston (stage 1)

B-Piston (stage 2)

C-Hole

Especially when trailer loads are high and at high speeds, it is important for the braking effect to be the same on both sides of the tractor. To achieve this, there is a hole (C) in the brake valve housing, allowing pressure to be equalized between the right and left pistons.



LX1041730

LX1041730-UN: .



Thank you very much  
for your reading.  
Please click here  
to get more information.