

John Deere 1050J Crawler Dozer Service Repair Technical Manual (TM10114)

**5076EF Tractor
Diagnostic Technical
Manual**



JOHN HARE



COLLECTION

**DIAGNOSTIC TECHNICAL MANUAL
5076EF Tractor**

TM609719 01DEC18 (ENGLISH)



John Deere Mexico

Covers: 1050J

Type: Service Manual

Language: English

Pages: 507

Format: PDF

Features: Bookmarked, searchable, printable

Compatibility: Windows/Mac/Tablet/Mobile

This service manual contains important information for the maintenance, troubleshooting and servicing of the **John Deere 1050J Crawler Dozer Service Repair Technical Manual (TM10114)**

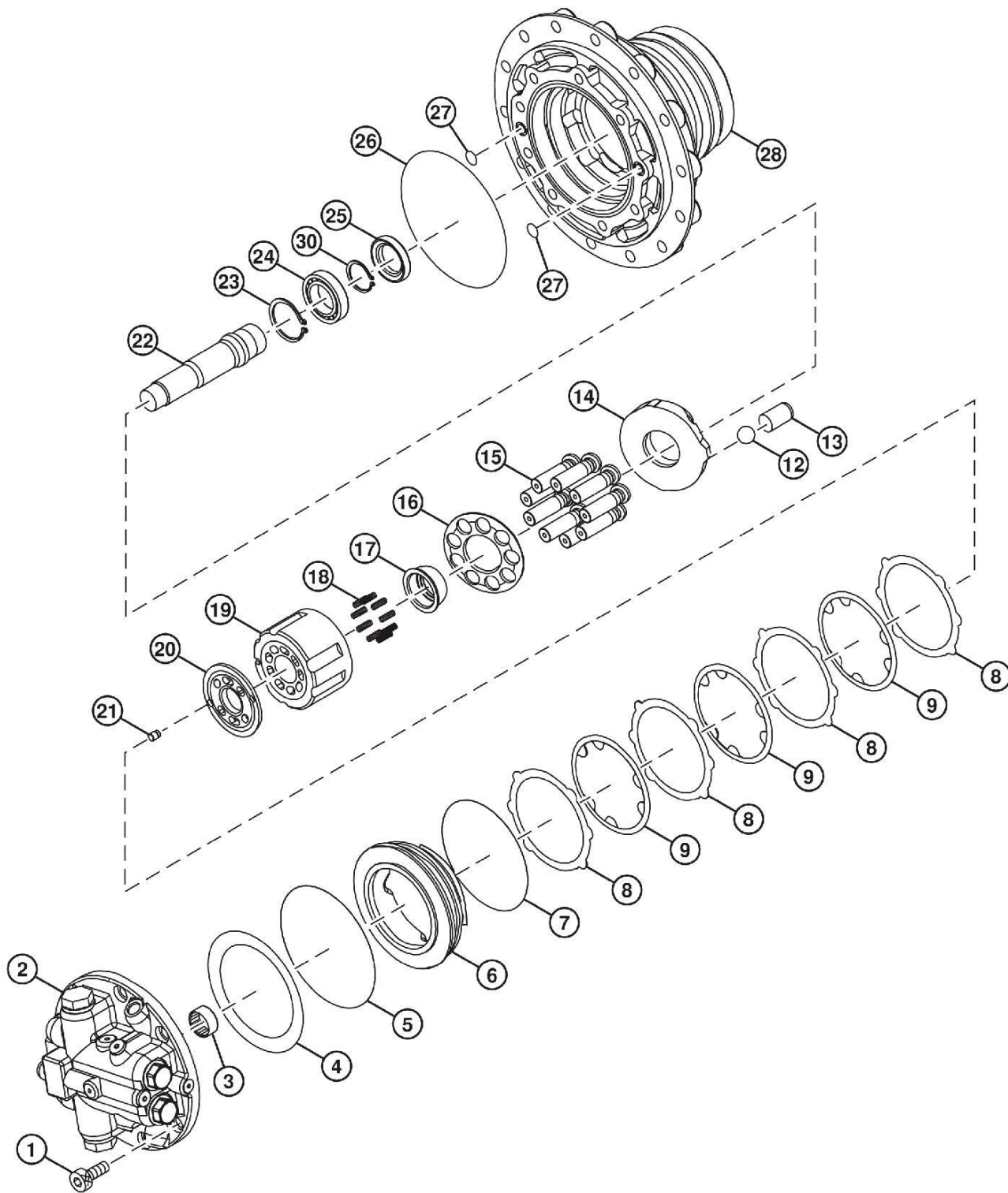
In this manual you will find detailed specifications, illustrations, schematics, diagrams and step-by-step procedures to properly service and diagnose the machine to the manufacturer's standards.

Contents:

- General Information
- Specifications
- Serial Number Location
- Engine Specifications
- Engine Diagnostics
- Engine Tests and Adjustments
- Engine Repair
- Power Train
- Transmission
- Axles
- Differential
- PTO
- Hydraulic System
- Electrical System
- Electrical Tests and Diagnostics
- Wiring Diagram / Schematic
- Ignition and Charging
- Steering
- Brakes
- Wheels
- Operator's Platform
- Body Panels
- Disassembly and Assembly
- Diagnostics, Tests and Adjustments
- Troubleshooting
- and much more...

Please note this manual is in **downloadable PDF format only**. If you have any questions about this product or would like to request sample pages, please contact us and reference the product name or SKU.

Hydraulic System



TX1203861

TX1203861-UN: Travel Motor and Park Brake

LEGEND:

- 1-Cap Screw (8 used)
- 2-Park Brake Valve
- 3-Needle Bearing
- 4-Disc Spring
- 5-O-Ring
- 6-Park Brake Piston
- 7-O-Ring
- 8-Plate (4 used)
- 9-Friction Plate (3 used)

- 12-Ball (2 used)
- 13-Piston (2 used)
- 14-Swash Plate
- 15-Piston (9 used)
- 16-Retainer
- 17-Bushing
- 18-Spring (9 used)
- 19-Rotor
- 20-Valve Plate

- 21-Dowel Pin (2 used)
- 22-Shaft
- 23-Retaining Ring
- 24-Roller Bearing
- 25-Oil Seal
- 26-O-Ring
- 27-O-Ring (3 used)
- 28-Park Brake Housing
- 30-Retaining Ring

1. Park and prepare machine for service safely. [See Park and Prepare for Service Safely.](#) (Group 0001.)
2. Remove travel gear case and motor. [See Travel Gear Case Remove and Install.](#) (Group 0250.)



Thank you very much
for your reading.
Please click here
to get more information.