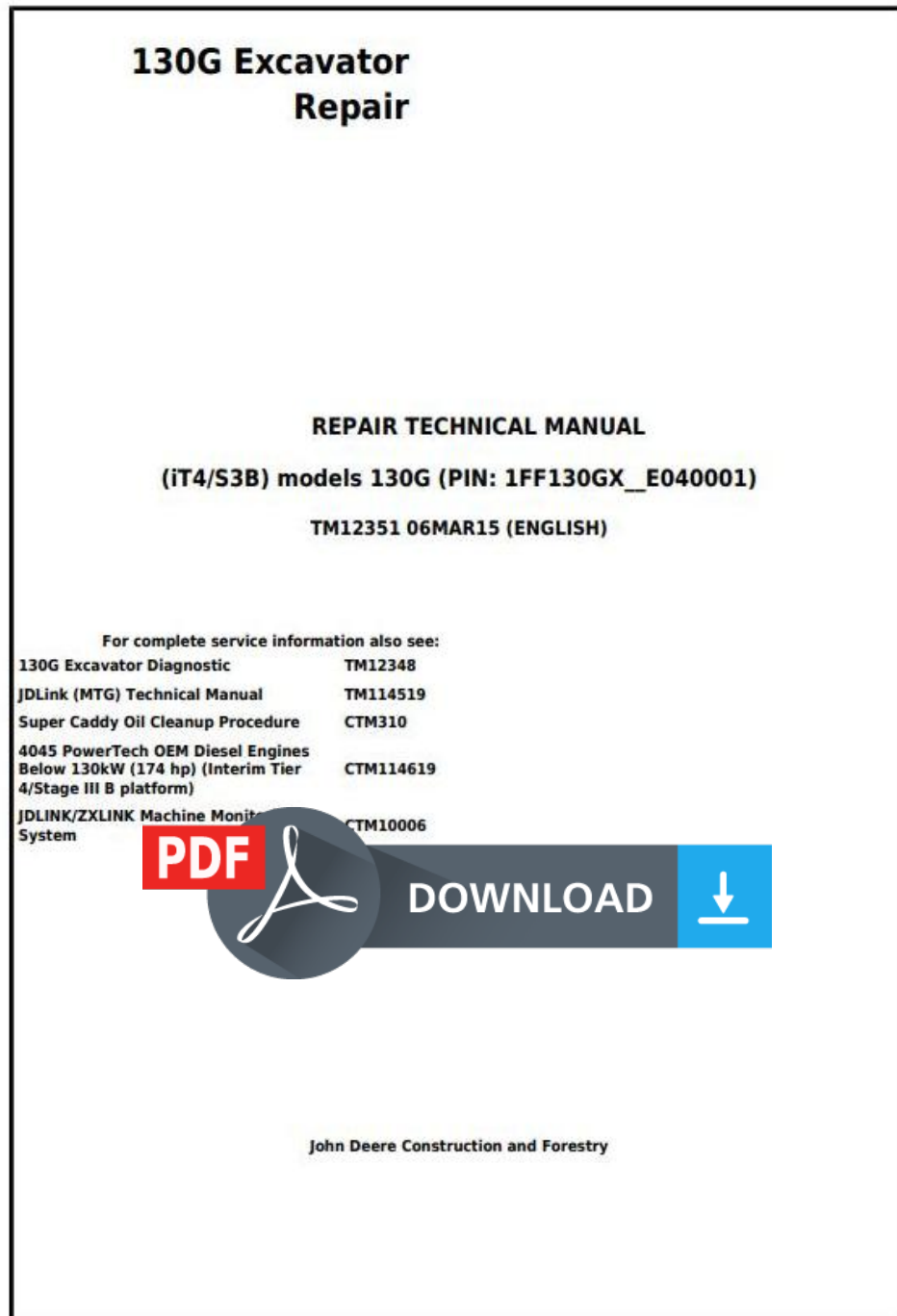


John Deere 130G (iT4/S3B) Excavator Service Repair Manual (TM12351)



Covers: 1FF130GX__E040001);,130G

Type: Service Manual

Language: English

Pages: 635

Format: PDF

Features: Bookmarked, searchable, printable

Compatibility: Windows/Mac/Tablet/Mobile

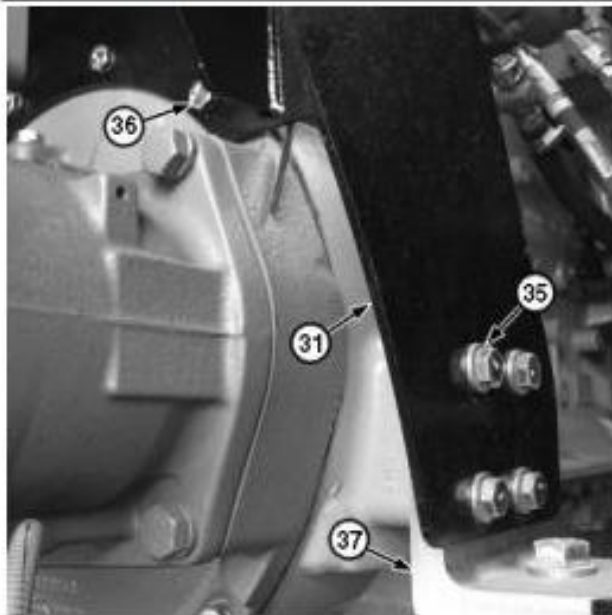
This service manual contains important information for the maintenance, troubleshooting and servicing of the **John Deere 130G (IT4/S3B) Excavator Service Repair Manual (TM12351)**

In this manual you will find detailed specifications, illustrations, schematics, diagrams and step-by-step procedures to properly service and diagnose the machine to the manufacturer's standards.

Contents:

- General Information
- Specifications
- Serial Number Location
- Engine Specifications
- Engine Diagnostics
- Engine Tests and Adjustments
- Engine Repair
- Power Train
- Transmission
- Axles
- Differential
- PTO
- Hydraulic System
- Electrical System
- Electrical Tests and Diagnostics
- Wiring Diagram / Schematic
- Ignition and Charging
- Steering
- Brakes
- Wheels
- Operator's Platform
- Body Panels
- Disassembly and Assembly
- Diagnostics, Tests and Adjustments
- Troubleshooting
- and much more...

Please note this manual is in **downloadable PDF format only**. If you have any questions about this product or would like to request sample pages, please contact us and reference the product name or SKU.

**LEGEND:**

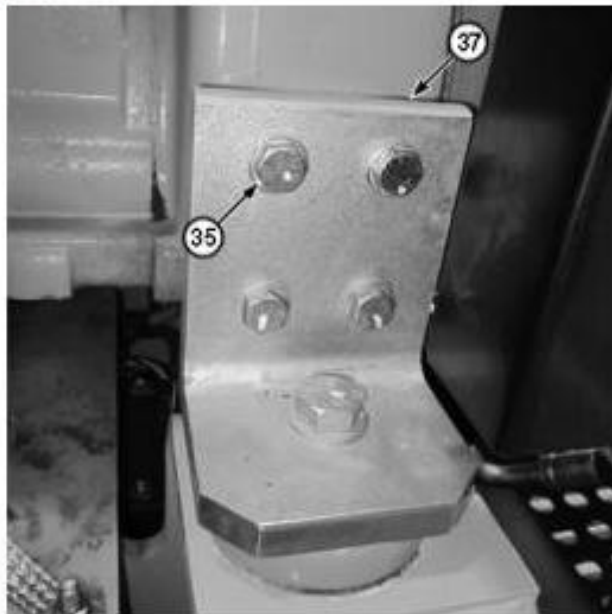
- 31 Exhaust Filter Mounting Bracket
- 35 Engine Mount Cap Screw (8 used)
- 36 Upper Pump Cap Screw (4 used)
- 37 Rear Engine Mount (2 used)

Rear Engine Mount With Mounting Bracket

With engine and exhaust filter mounting bracket (31) supported, remove engine mount cap screws (35) from both rear engine mounts (37) and upper pump cap screws (36).

[30] - Swing exhaust filter mounting bracket away from engine to gain access to rear engine mounts.

[31] -

**LEGEND:**

- 35 Engine Mount Cap Screw (8 used)
- 37 Rear Engine Mount (2 used)

Rear Engine Mount Without Mounting Bracket

Install engine mount cap screws (35) and upper pump cap screws to support engine.

[32] -



Thank you very much
for your reading.
Please click here
to get more information.