

# John Deere 160DLC Excavator Diagnostic, Operation and Test Manual (TM10088)

744E 4WD Loader Repair



## REPAIR TECHNICAL MANUAL

4WD Loaders models 744E

TM1455 22 FEB 05 (ENGLISH)

**For complete service information also see:**

744E 4WD Loader Diagnostic	TM1454
Alternators and Starting Motors	CTM77
Electronic Fuel Injection Systems	CTM68
Series 500, 6101 Diesel Engines Diagnostic and Repair	CTM61
Series 500, 6101 Diesel Engines Diagnostic and Repair	CTM20
TeamMate II 1200	

PDF



DOWNLOAD



John Deere Construction and Forestry  
Printed by Belgreen



TM1455

Covers: 160DLC

**Type:** Service Manual

**Language:** English

**Pages:** 970

**Format:** PDF

**Features:** Bookmarked, searchable, printable

**Compatibility:** Windows/Mac/Tablet/Mobile

This service manual contains important information for the maintenance, troubleshooting and servicing of the **John Deere 160DLC Excavator Diagnostic, Operation and Test Manual (TM10088)**

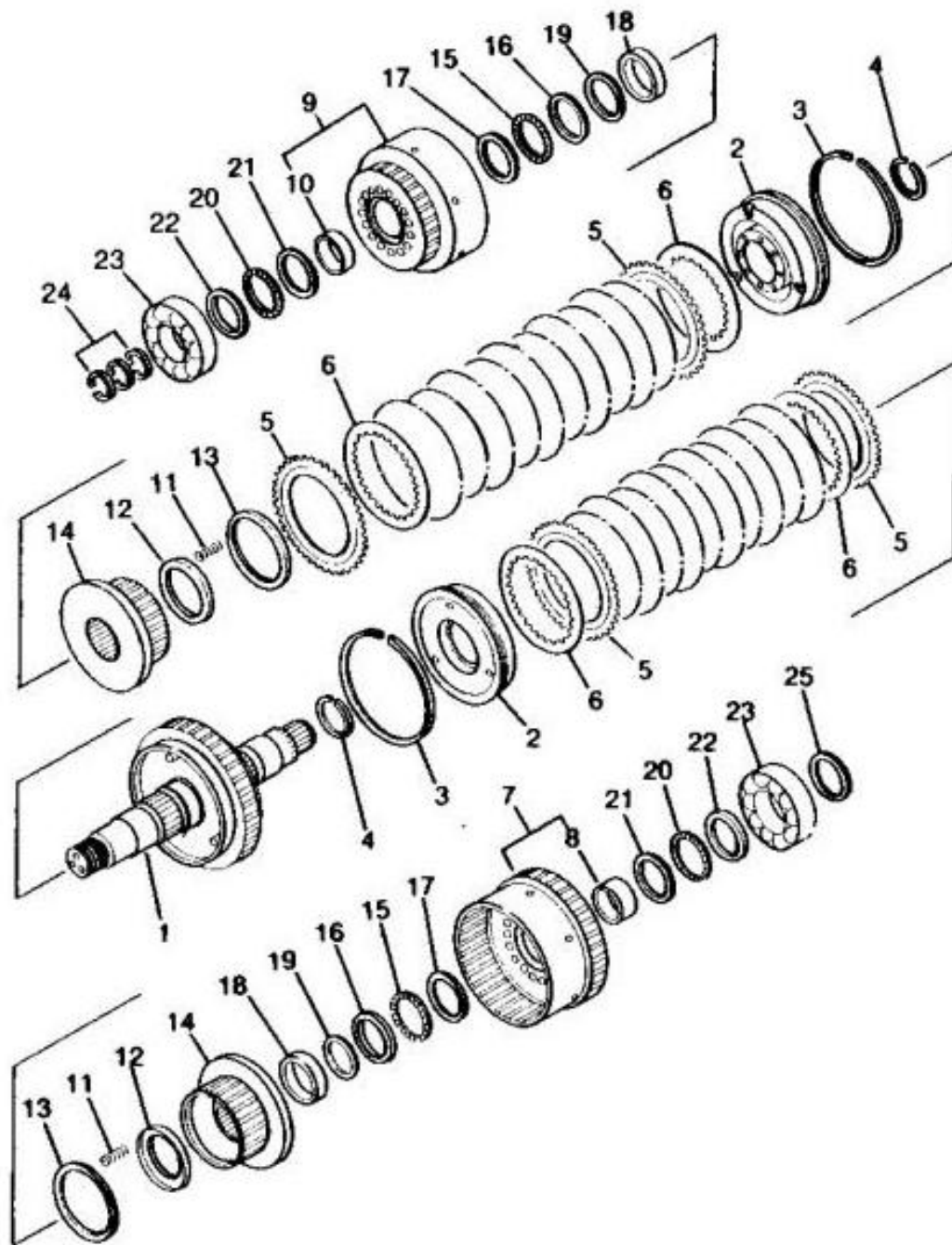
In this manual you will find detailed specifications, illustrations, schematics, diagrams and step-by-step procedures to properly service and diagnose the machine to the manufacturer's standards.

**Contents:**

- General Information
- Specifications
- Serial Number Location
- Engine Specifications
- Engine Diagnostics
- Engine Tests and Adjustments
- Engine Repair
- Power Train
- Transmission
- Axles
- Differential
- PTO
- Hydraulic System
- Electrical System
- Electrical Tests and Diagnostics
- Wiring Diagram / Schematic
- Ignition and Charging
- Steering
- Brakes
- Wheels
- Operator's Platform
- Body Panels
- Disassembly and Assembly
- Diagnostics, Tests and Adjustments
- Troubleshooting
- and much more...

Please note this manual is in **downloadable PDF format only**. If you have any questions about this product or would like to request sample pages, please contact us and reference the product name or SKU.

## Disassemble And Assemble Forward And Reverse Clutch Packs



### Reverse Clutch Pack

#### LEGEND:

- |   |                                          |
|---|------------------------------------------|
| 1 | Shaft                                    |
| 2 | Piston (2 used)                          |
| 3 | Seal Ring (2 used)                       |
| 4 | Snap Ring (2 used)                       |
| 5 | Outer Spline Disk (SN -000356)(14 used)  |
| 5 | Outer Spline Disk (SN000357-)(16 used)   |
| 6 | Inner Spline Plate (SN -000356)(14 used) |
| 6 | Inner Spline Plate (SN000357-)(16 used)  |
| 7 | Gear                                     |
| 8 | Bushing (SN -000499)                     |



Thank you very much  
for your reading.  
Please click here  
to get more information.