

# John Deere 17ZTS Compact Excavator Service Repair Technical Manual (TM1897)

135G Excavator Repair



**Covers:** 17ZTS

**Type:** Service Manual

**Language:** English

**Pages:** 584

**Format:** PDF

**Features:** Bookmarked, searchable, printable

**Compatibility:** Windows/Mac/Tablet/Mobile

This service manual contains important information for the maintenance, troubleshooting and servicing of the **John Deere 17ZTS Compact Excavator Service Repair Technical Manual (TM1897)**

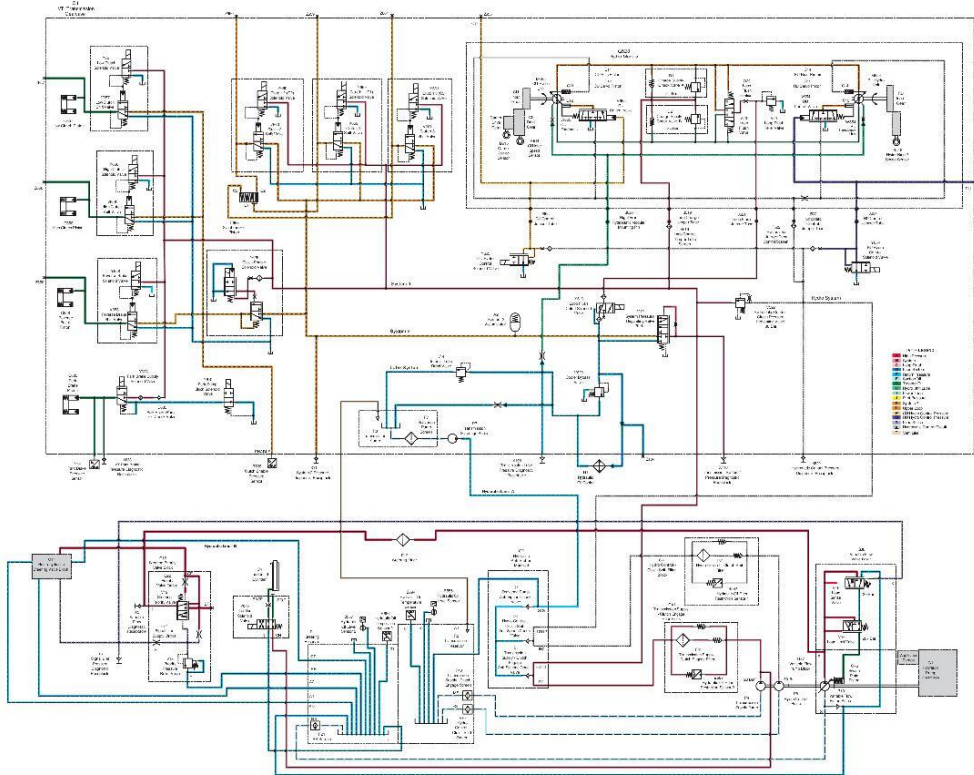
In this manual you will find detailed specifications, illustrations, schematics, diagrams and step-by-step procedures to properly service and diagnose the machine to the manufacturer's standards.

**Contents:**

- General Information
- Specifications
- Serial Number Location
- Engine Specifications
- Engine Diagnostics
- Engine Tests and Adjustments
- Engine Repair
- Power Train
- Transmission
- Axles
- Differential
- PTO
- Hydraulic System
- Electrical System
- Electrical Tests and Diagnostics
- Wiring Diagram / Schematic
- Ignition and Charging
- Steering
- Brakes
- Wheels
- Operator's Platform
- Body Panels
- Disassembly and Assembly
- Diagnostics, Tests and Adjustments
- Troubleshooting
- and much more...

Please note this manual is in **downloadable PDF format only**. If you have any questions about this product or would like to request sample pages, please contact us and reference the product name or SKU.

Transmission Hydraulic Circuit Schematic



N123258-JN: IVT™ —Transmission Hydraulic Circuit Schematic

LEGEND:

- A-High Pressure
- B-System 1
- C-Loop Flush
- D-Lubricating Pressure
- E-Return Pressure
- F-Suction Oil
- G-Trapped Oil
- H-Hydro Unit Lube
- J-Pilot Pressure
- K-System 2
- L-Hydrostatic Control Circuit
- R-CU Hydro Control Pressure

- C12- C12 — CU Servo Piston — G520 — Overall Components
- C13- C13 — RU Servo Piston — G520 — Overall Components
- C14- C14 — RU Bias Piston — G520 — Overall Components
- C76- C76 — Swash Plate Piston
- C633- C633 — Park Brake Piston — G4 — Left Side
- C657- C657 — Low Clutch Piston
- C656- C656 — High Clutch Piston
- C658- C658 — Reverse Brake Piston

- F522- F522 — Hydrostatic Jumper Tube Screen — G4 — Left Side)
- G1- G1 — Hydraulic Pump Gearcase — G1 — Overall Components
- G2- G2 — Hydraulic Anti-Siphon Manifold — R1 and R2 Overall Components
- G4-IVT Transmission Gearcase — G4 — Left Side
- G4 — Rear Lower
- G4 — Top Right
- G4 — Top Left
- G41- G41 — Electrohydraulic Steering Valve



Thank you very much  
for your reading.  
Please click here  
to get more information.