

John Deere 180GLC (PIN: 1FF180GX_E020001-) iT4/S3B Excavator Service Repair Manual (TM12339)

180GLC Excavator Repair

REPAIR TECHNICAL MANUAL

iT4/S3B models 180GLC (PIN: 1FF180GX_E020001)

TM12339 01NOV15 (ENGLISH)

For complete service information also see:

180GLC Excavator Operation and Test	TM12336
JDLink (MTG) Technical Manual	TM114519
Super Caddy Oil Cleanup Procedure	CTM310
4045 PowerTech OEM Diesel Engines Below 130kW (174 hp) (Interim Tier 4/Stage III B platform)	CTM114619



John Deere Construction and Forestry

Covers: 180GLC,1FF180GX_E020001-)

Type: Service Manual

Language: English

Pages: 609

Format: PDF

Features: Bookmarked, searchable, printable

Compatibility: Windows/Mac/Tablet/Mobile

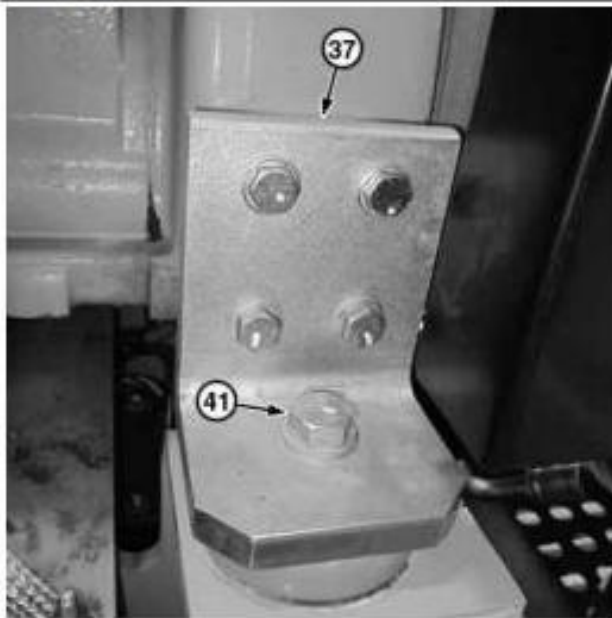
This service manual contains important information for the maintenance, troubleshooting and servicing of the **John Deere 180GLC (PIN: 1FF180GX_E020001-) IT4/S3B Excavator Service Repair Manual (TM12339)**

In this manual you will find detailed specifications, illustrations, schematics, diagrams and step-by-step procedures to properly service and diagnose the machine to the manufacturer's standards.

Contents:

- General Information
- Specifications
- Serial Number Location
- Engine Specifications
- Engine Diagnostics
- Engine Tests and Adjustments
- Engine Repair
- Power Train
- Transmission
- Axles
- Differential
- PTO
- Hydraulic System
- Electrical System
- Electrical Tests and Diagnostics
- Wiring Diagram / Schematic
- Ignition and Charging
- Steering
- Brakes
- Wheels
- Operator's Platform
- Body Panels
- Disassembly and Assembly
- Diagnostics, Tests and Adjustments
- Troubleshooting
- and much more...

Please note this manual is in **downloadable PDF format only**. If you have any questions about this product or would like to request sample pages, please contact us and reference the product name or SKU.

**LEGEND:**

- 37 Rear Engine Mount (2 used)
- 41 Rear Isolator Cap Screw (2 used)

Rear Engine Mount

Remove rear isolator cap screws (41) from rear engine mounts (37).

[40] -

**LEGEND:**

- 42 Front Engine Mount (2 used)
- 43 Front Isolator Cap Screw (2 used)

Front Engine Mount

Remove front isolator cap screws (43) from front engine mounts (42).

[41] -

**CAUTION:**

Prevent possible crushing injury from heavy component. Use appropriate lifting device.

Using appropriate lifting device remove engine.



Thank you very much
for your reading.
Please click here
to get more information.