

# John Deere 190GW (PIN: 1FF190GW\_E051001-) Wheeled Excavator Service Repair Manual (TM13248X19)

**3756G and 3756GLC Log  
Loader Repair**  
(PIN: 1FF7576G\_\_D376001—)



JOHN HARE



COLLECTION

REPAIR TECHNICAL MANUAL

3756G and 3756GLC Log Loader (PIN: 1FF7576G



**Covers:** 190GW,1FF190GW\_E051001-)

**Type:** Service Manual

**Language:** English

**Pages:** 823

**Format:** PDF

**Features:** Bookmarked, searchable, printable

**Compatibility:** Windows/Mac/Tablet/Mobile

This service manual contains important information for the maintenance, troubleshooting and servicing of the **John Deere 190GW (PIN: 1FF190GW\_\_E051001-) Wheeled Excavator Service Repair Manual (TM13248X19)**

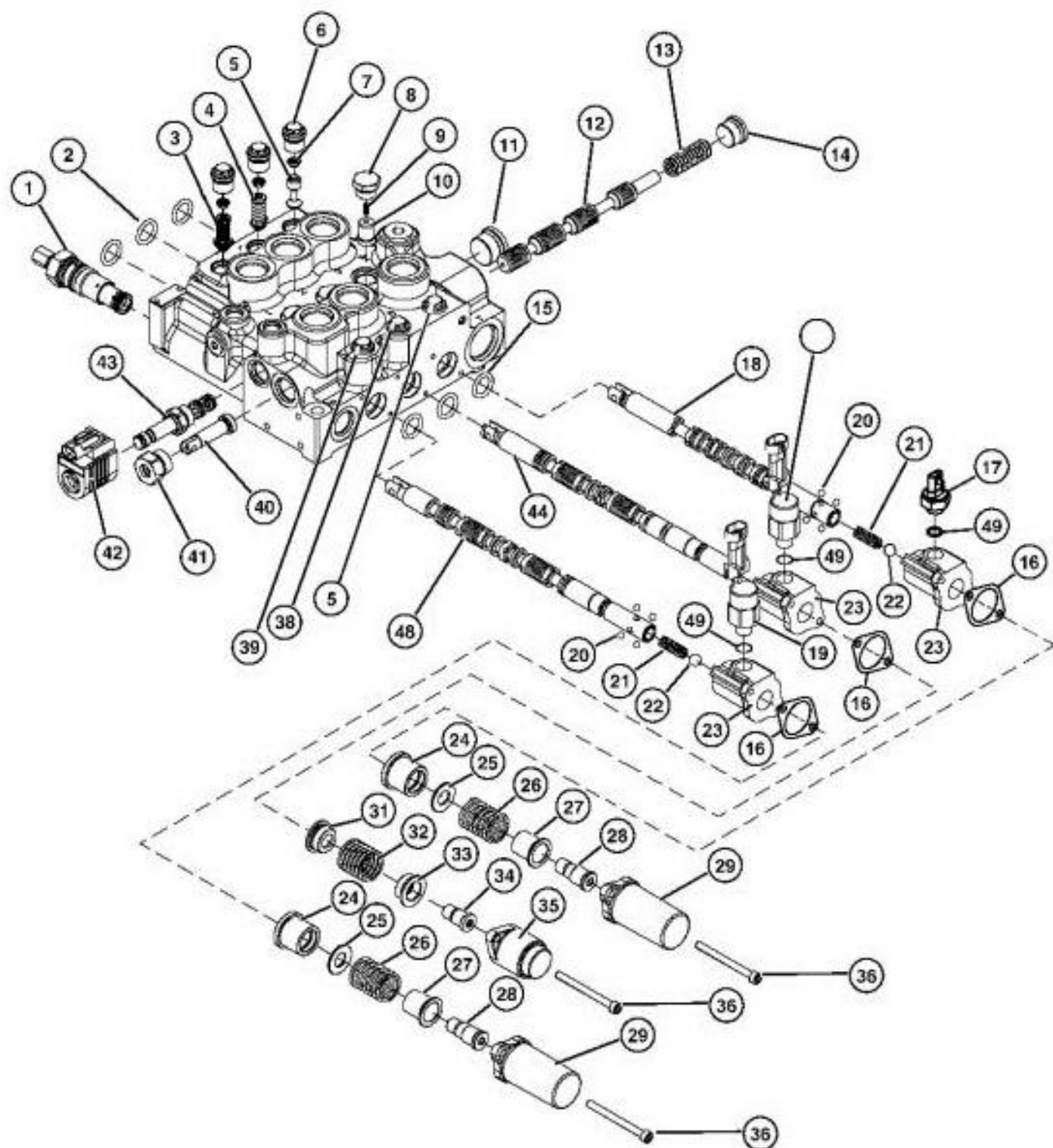
In this manual you will find detailed specifications, illustrations, schematics, diagrams and step-by-step procedures to properly service and diagnose the machine to the manufacturer's standards.

**Contents:**

- General Information
- Specifications
- Serial Number Location
- Engine Specifications
- Engine Diagnostics
- Engine Tests and Adjustments
- Engine Repair
- Power Train
- Transmission
- Axles
- Differential
- PTO
- Hydraulic System
- Electrical System
- Electrical Tests and Diagnostics
- Wiring Diagram / Schematic
- Ignition and Charging
- Steering
- Brakes
- Wheels
- Operator's Platform
- Body Panels
- Disassembly and Assembly
- Diagnostics, Tests and Adjustments
- Troubleshooting
- and much more...

Please note this manual is in **downloadable PDF format only**. If you have any questions about this product or would like to request sample pages, please contact us and reference the product name or SKU.

# Control Valve Disassemble and Assemble—Skid Steer Loader (Hand Control Models S.N. —111091; Foot Control Models S.N. —113348)



T199865

## Control Valve

### LEGEND:

- 1 System Relief Valve
- 2 O-Ring (3 used)
- 3 Boom Down Circuit Relief and Anticavitation Valve



Thank you very much  
for your reading.  
Please click here  
to get more information.