

John Deere 244E 4WD Loader Service Repair Technical Manual (tm1503)

9450 Combines (695101-) 9550 Combines (695201-) 9650 Combines (695301-) Repair

REPAIR TECHNICAL MANUAL

Combines models 9450 (S.N. 695101-), 9550 (S.N. 695201-), 9650 (S.N. 695301-)

TM2001 05 OCT 13 (ENGLISH)

For complete service information also see:

9450, 9550, 9650 Combines Diagnostic TM2002

PowerTech 8.1 L Diesel Engines Base CTM86
Engine

Alternators and Starting Motors CTM77

PowerTech 8.1L Diesel Engines Level 9
Electronic Fuel System With D CTM255
Pressure Comm

PowerTech 4.5L
Mechanical Fuel

PowerTech 4.5L & 6.8L D
1/Stage I, Tier 2/Stage II,
Tier 3/Stage IIA Tier 3/Stag
Engine)



DOWNLOAD



John Deere Agriculture

Type: Service Manual

Language: English

Pages: 128

Format: PDF

Features: Bookmarked, searchable, printable

Compatibility: Windows/Mac/Tablet/Mobile

This service manual contains important information for the maintenance, troubleshooting and servicing of the **John Deere 244E 4WD Loader Service Repair Technical Manual (tm1503)**

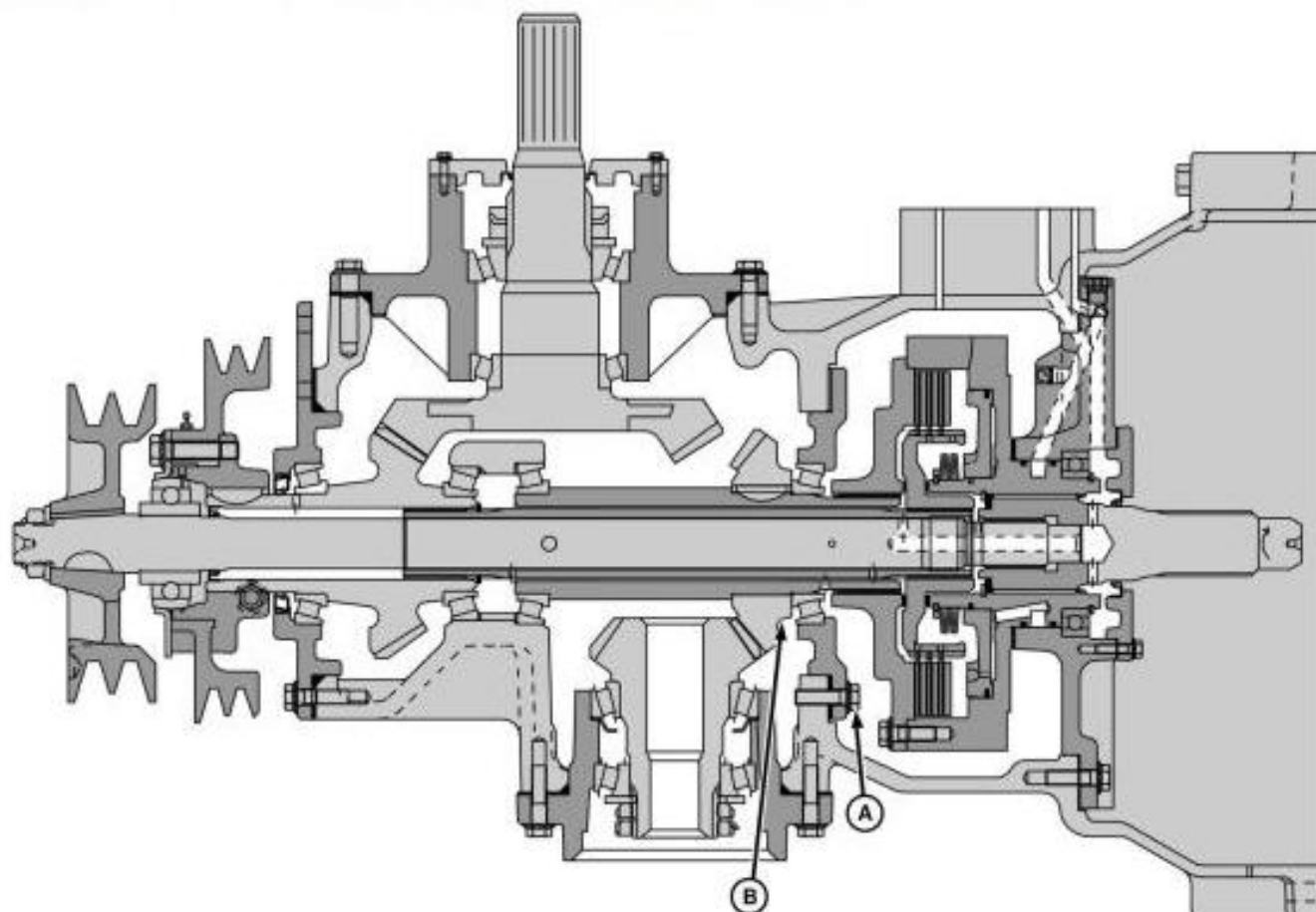
In this manual you will find detailed specifications, illustrations, schematics, diagrams and step-by-step procedures to properly service and diagnose the machine to the manufacturer's standards.

Contents:

- General Information
- Specifications
- Serial Number Location
- Engine Specifications
- Engine Diagnostics
- Engine Tests and Adjustments
- Engine Repair
- Power Train
- Transmission
- Axles
- Differential
- PTO
- Hydraulic System
- Electrical System
- Electrical Tests and Diagnostics
- Wiring Diagram / Schematic
- Ignition and Charging
- Steering
- Brakes
- Wheels
- Operator's Platform
- Body Panels
- Disassembly and Assembly
- Diagnostics, Tests and Adjustments
- Troubleshooting
- and much more...

Please note this manual is in **downloadable PDF format only**. If you have any questions about this product or would like to request sample pages, please contact us and reference the product name or SKU.

Disassemble and Assemble Hydrostatic Gear Set



Hydrostatic Gear Set

LEGEND:

- A Cap Screw (6 used)
B Gear

[1] - Remove separator drive wet clutch. (See procedure in this group.)

[2] - Remove six cap screws (A) and remove housing and shims.

[3] - Remove gear assembly (B).

[4] - Inspect gear teeth for wear and bearings for roughness.

[5] -

IMPORTANT:

Gears are available only as a matched set. Replace as a matched set.

Replace parts as necessary.



Thank you very much
for your reading.
Please click here
to get more information.