

John Deere 250D, 300D Articulated Dump Truck (BELL, DW) Diagnostic and Test Service Manual (TM2115)

**C850 Tow Behind
Commodity Air Cart
Diagnostic**



JOHN HARE



COLLECTION

**DIAGNOSTIC TECHNICAL MANUAL
C850 Tow Behind Commodity Air Cart**

TM122419 01DEC18 (ENGLISH)



John Deere Seeding Group

Covers: 300D,200537-201811;;599286-609165),250D,200537-201811;

Type: Service Manual

Language: English

Pages: 530

Format: PDF

Features: Bookmarked, searchable, printable

Compatibility: Windows/Mac/Tablet/Mobile

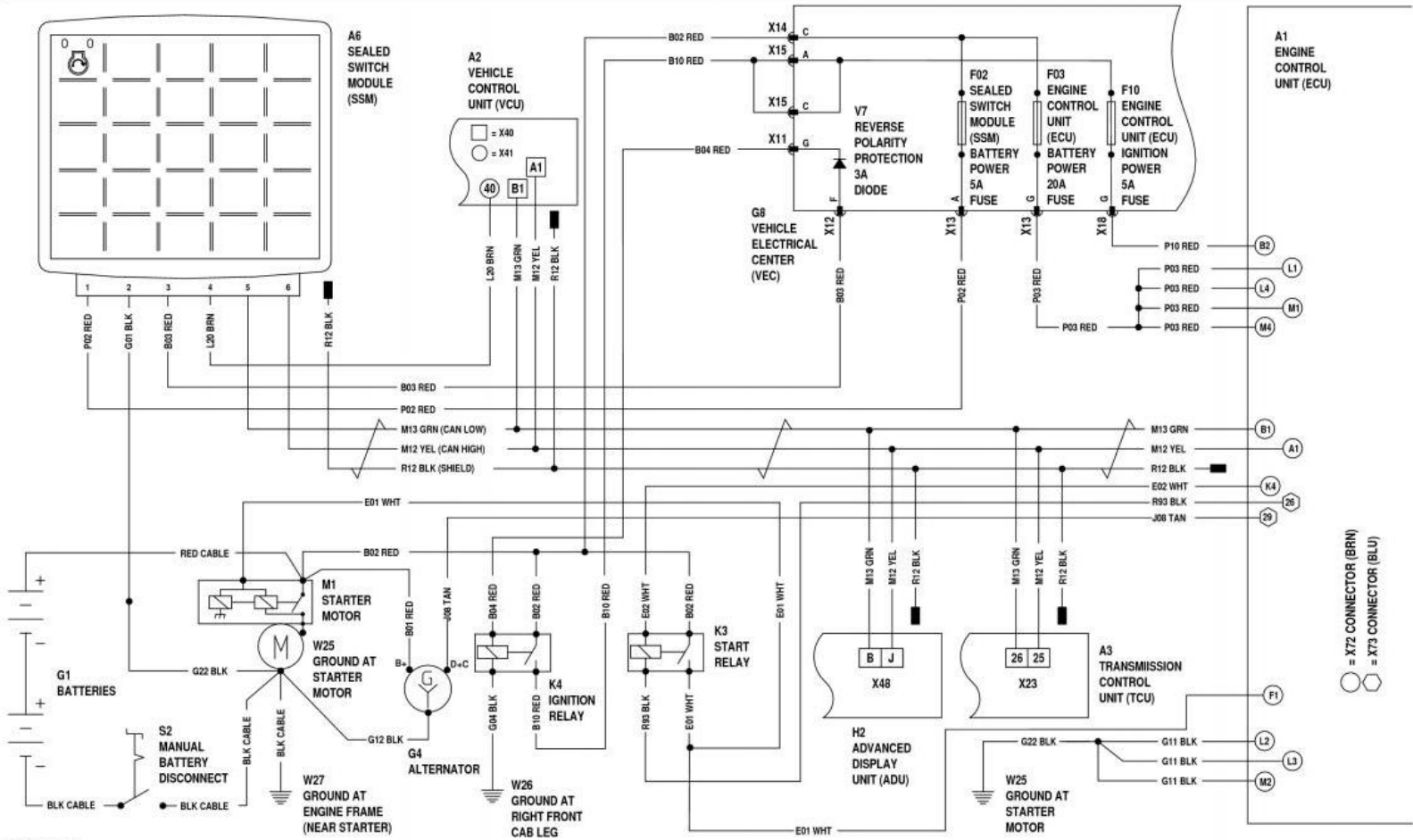
This service manual contains important information for the maintenance, troubleshooting and servicing of the **John Deere 250D, 300D Articulated Dump Truck (BELL, DW) Diagnostic and Test Service Manual (TM2115)**

In this manual you will find detailed specifications, illustrations, schematics, diagrams and step-by-step procedures to properly service and diagnose the machine to the manufacturer's standards.

Contents:

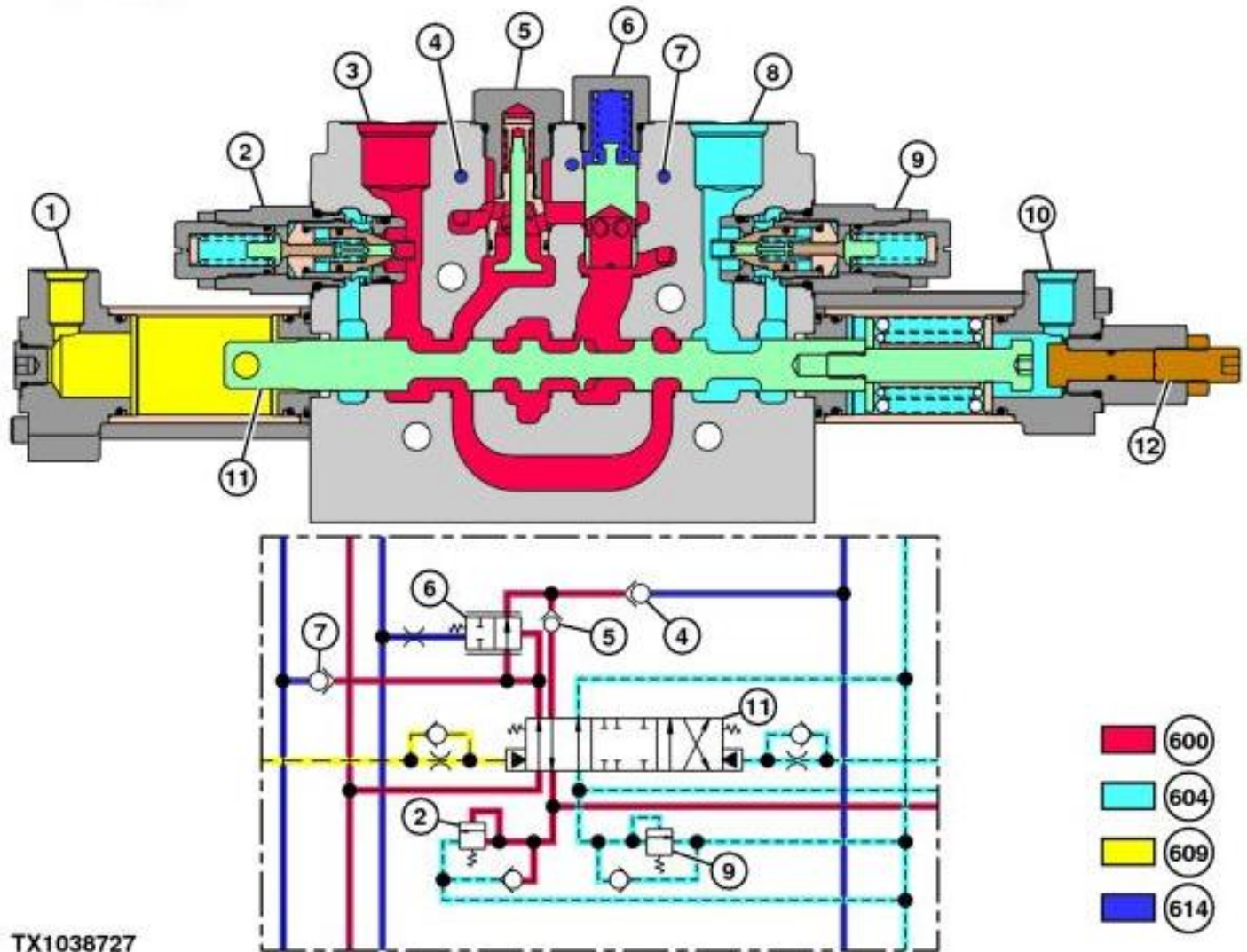
- General Information
- Specifications
- Serial Number Location
- Engine Specifications
- Engine Diagnostics
- Engine Tests and Adjustments
- Engine Repair
- Power Train
- Transmission
- Axles
- Differential
- PTO
- Hydraulic System
- Electrical System
- Electrical Tests and Diagnostics
- Wiring Diagram / Schematic
- Ignition and Charging
- Steering
- Brakes
- Wheels
- Operator's Platform
- Body Panels
- Disassembly and Assembly
- Diagnostics, Tests and Adjustments
- Troubleshooting
- and much more...

Please note this manual is in **downloadable PDF format only**. If you have any questions about this product or would like to request sample pages, please contact us and reference the product name or SKU.



TX1106533 Engine Control Unit (ECU) Circuit Schematic (1 of 3)

Bucket Section Operation—Boom Raise and Bucket Dump (High-Lift Option)



TX1038727

Bucket Section Operation—Boom Raise and Bucket Dump (High-Lift Option)

LEGEND:

1	Bucket Dump Pilot
2	Circuit Relief with Anticavitation Valve
3	Bucket Dump Work Port
4	LS Check Valve C2
5	Load Check Valve
6	Pressure Compensator
7	LS Check Valve C1
8	Bucket Rollback Work Port
9	Circuit Relief with Anticavitation Valve
10	Bucket Rollback Pilot
11	Spool
12	Stroke Adjustor
600	High-Pressure Oil
604	Return Oil
609	Pilot Oil
614	Load Sense Oil

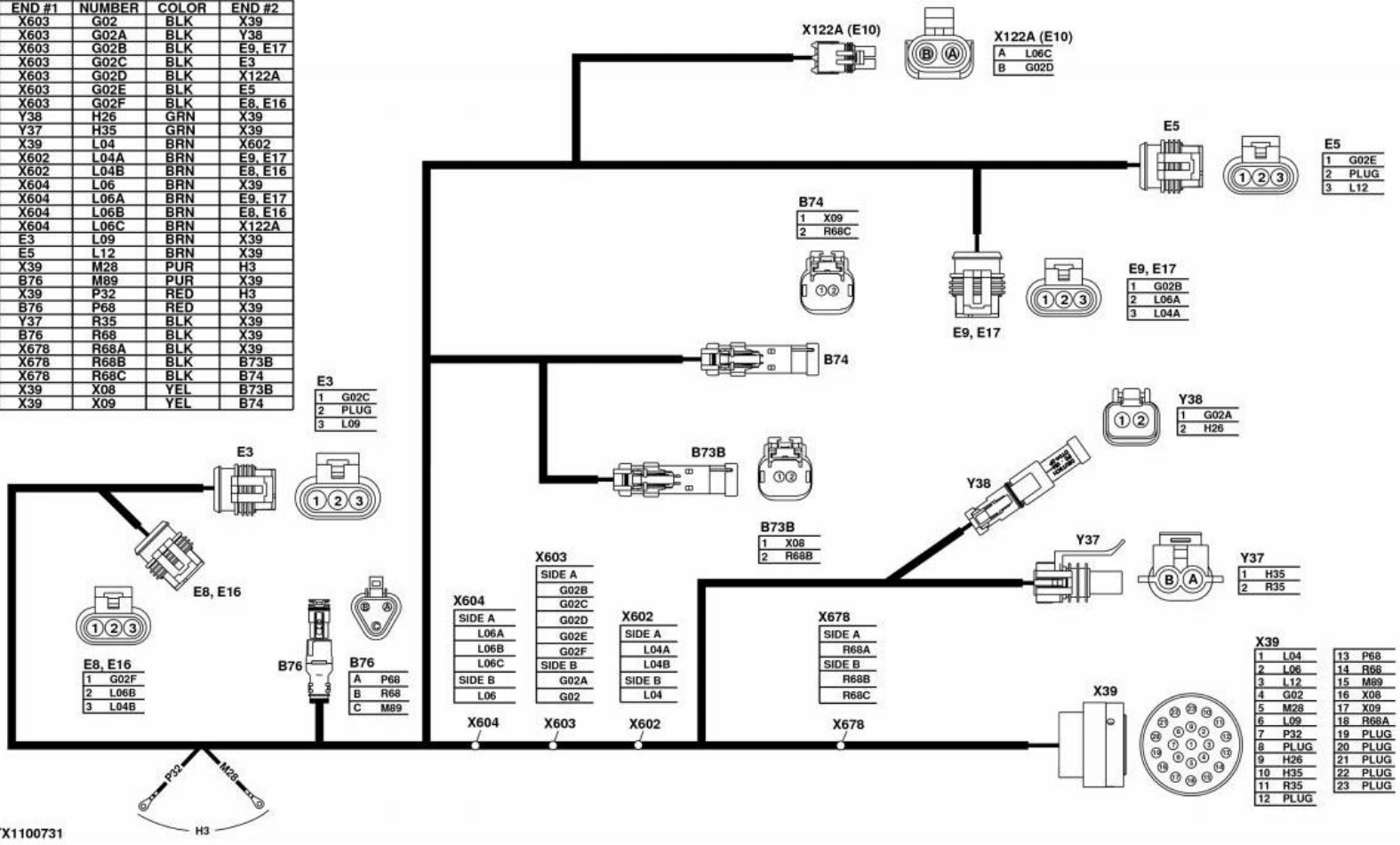
→NOTE:

The stroke adjustor assembly (10) is factory set to full flow.

The bucket section of the loader control valve is a closed center, pilot-operated, three-position, four-way spool-type valve. Both work ports are equipped with screw adjustable circuit relief valves with anticavitation protection (2 and 9). Load sense check valves in each loader control valve section route the highest load sense signal to the spring cavity of the pressure compensator

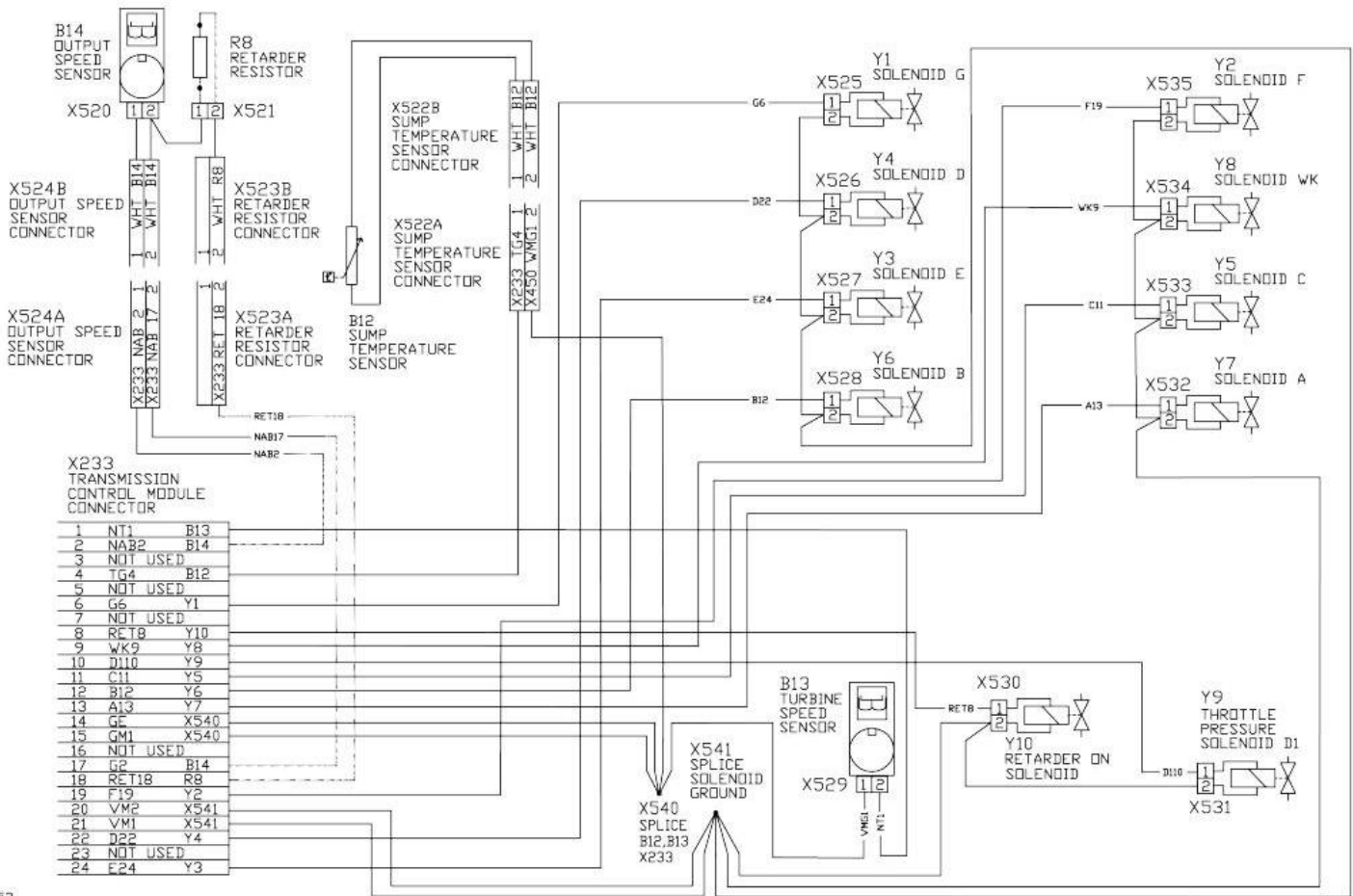
Rear Frame Harness (W13) Wiring Diagram

END #1	NUMBER	COLOR	END #2
X603	G02	BLK	X39
X603	G02A	BLK	Y38
X603	G02B	BLK	E9, E17
X603	G02C	BLK	E3
X603	G02D	BLK	X122A
X603	G02E	BLK	E5
X603	G02F	BLK	E8, E16
Y38	H26	GRN	X39
Y37	H35	GRN	X39
X39	L04	BRN	X602
X602	L04A	BRN	E9, E17
X602	L04B	BRN	E8, E16
X604	L06	BRN	X39
X604	L06A	BRN	E9, E17
X604	L06B	BRN	E8, E16
X604	L06C	BRN	X122A
E3	L09	BRN	X39
E5	L12	BRN	X39
X39	M28	PUR	H3
B76	M89	PUR	X39
X39	P32	RED	H3
B76	P68	RED	X39
Y37	R35	BLK	X39
B76	R68	BLK	X39
X678	R68A	BLK	X39
X678	R68B	BLK	B73B
X678	R68C	BLK	B74
X39	X08	YEL	B73B
X39	X09	YEL	B74



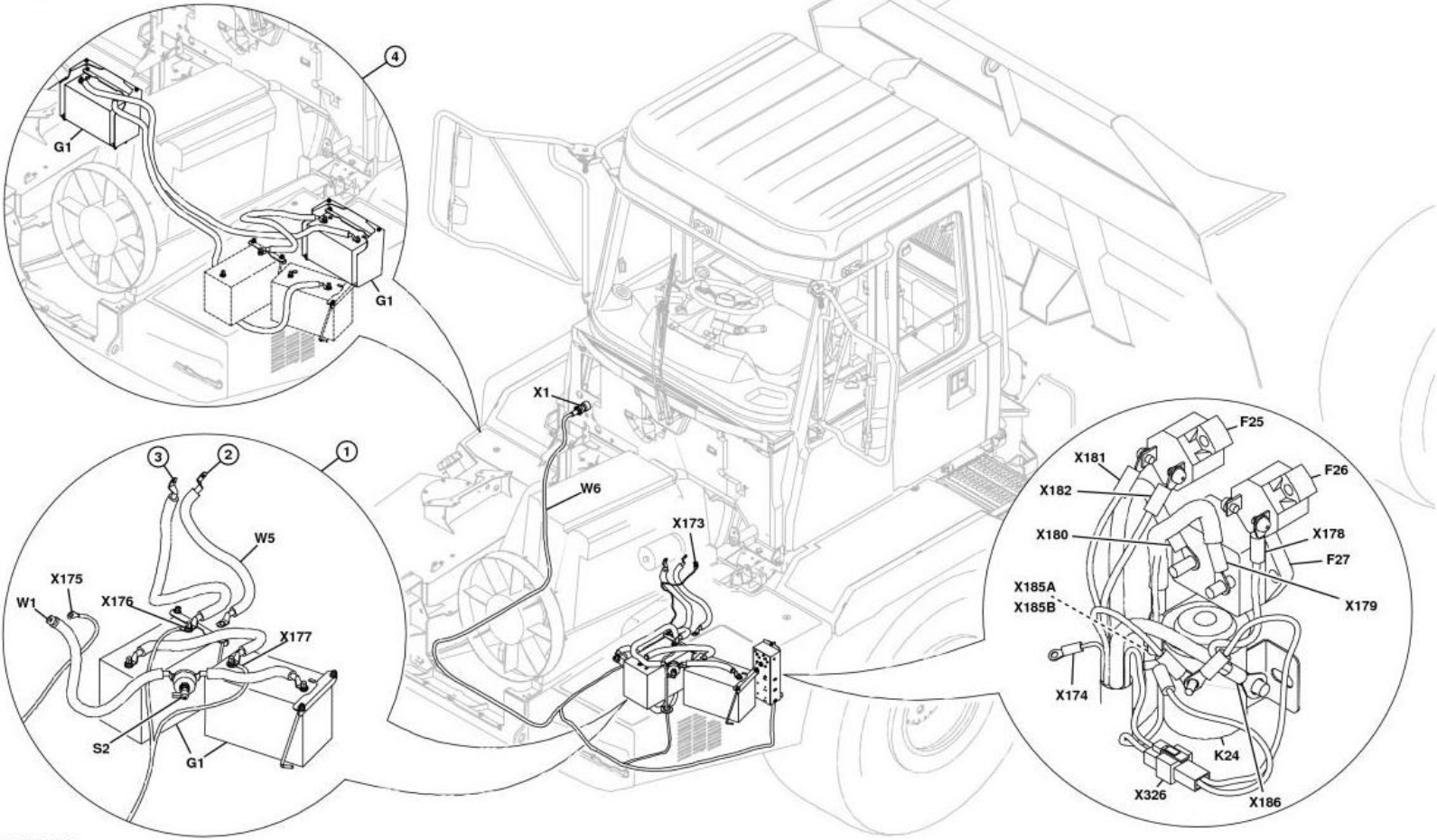
TX1100731 Rear Frame Harness (W13) Wiring Diagram

Transmission Control Module Harness (W11) Wiring Diagram (S.N. 200537-200926)



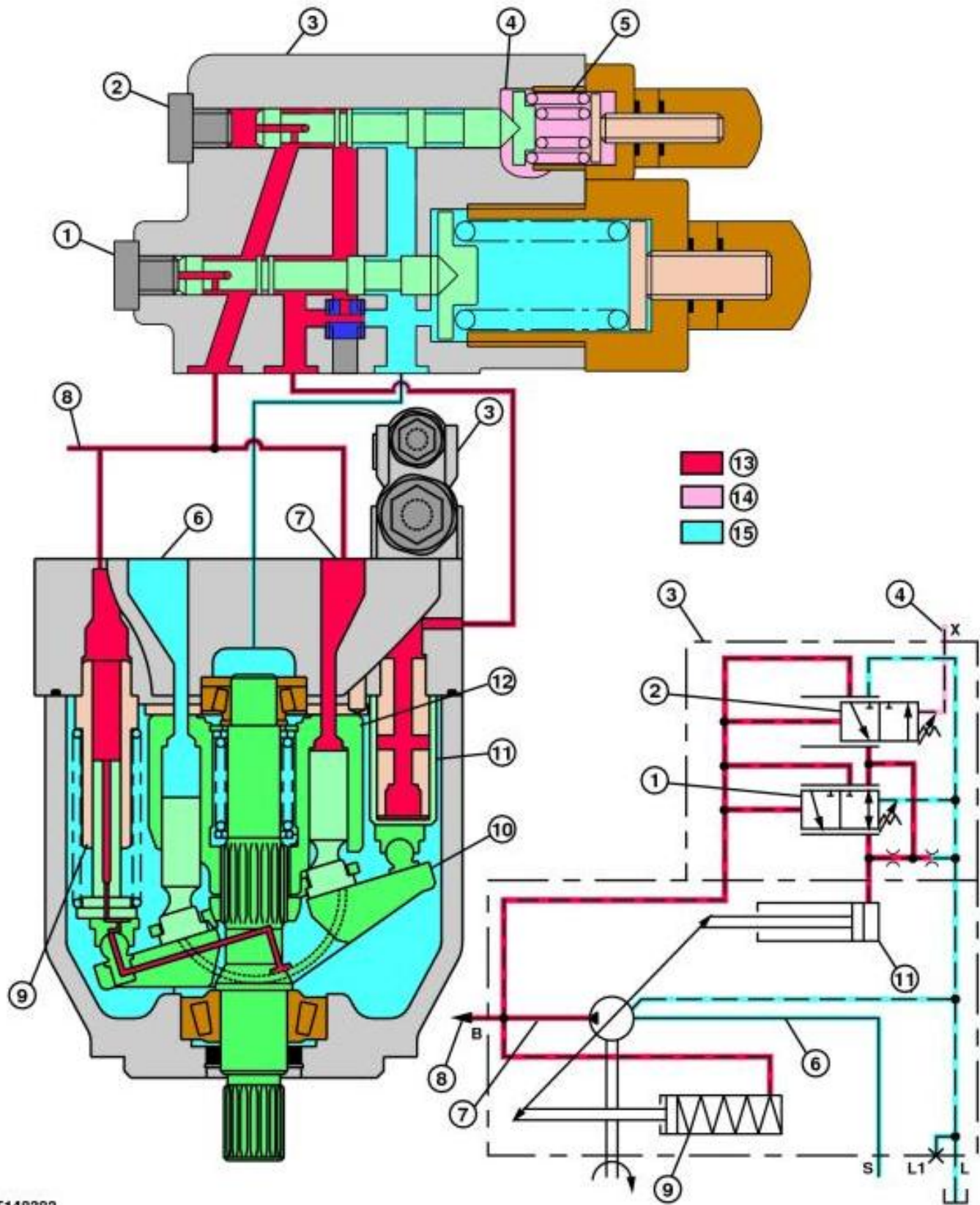
TX1072653
Transmission Control Module Harness (W11) Wiring Diagram

Main Power Harness (W6) Component Location



TX1008189
Main Power Harness (W6) Component Location

Main Hydraulic Pump Operation



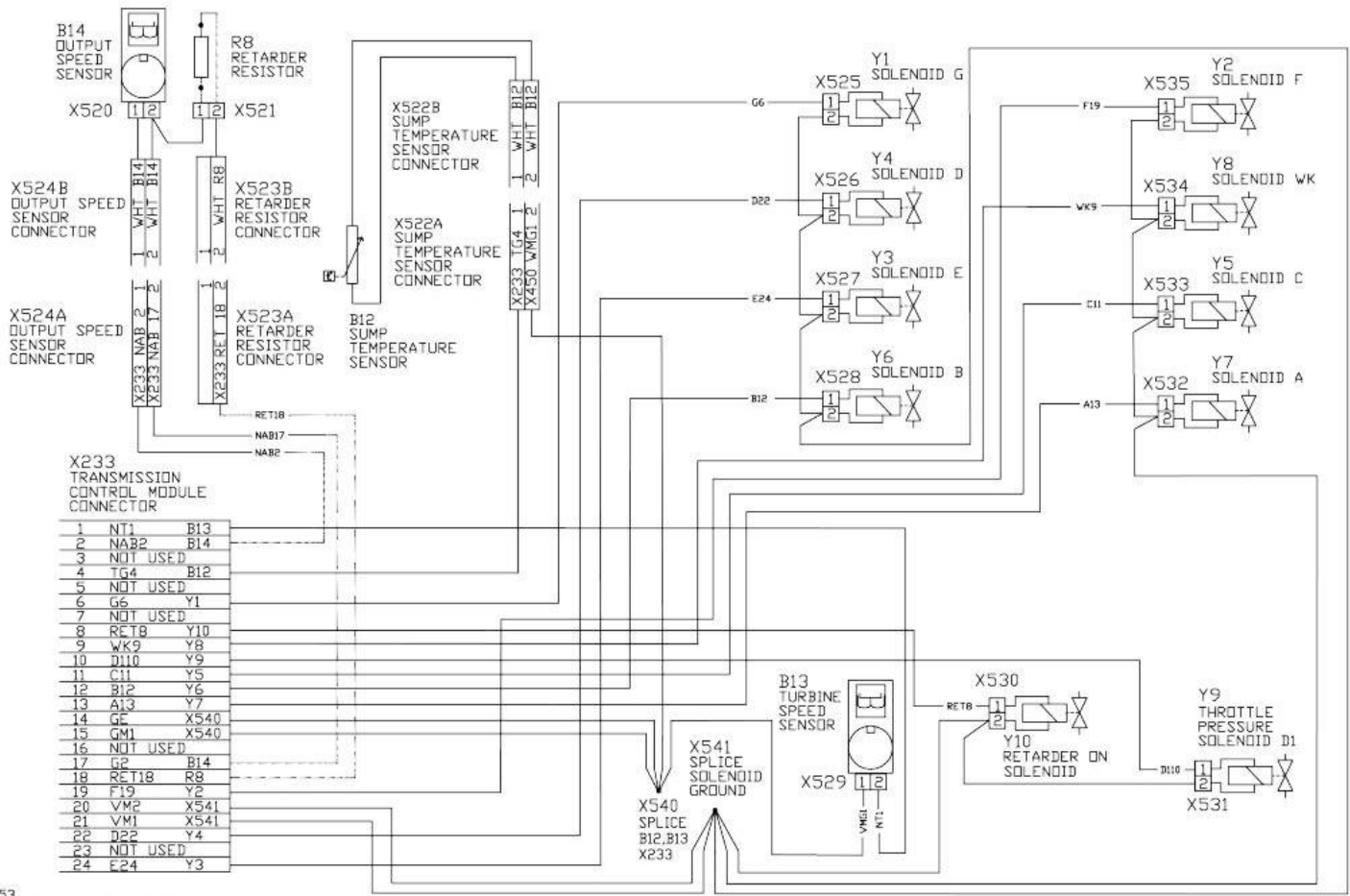
T148382

Main Hydraulic Pump

LEGEND:

- 1 Compensator Valve
- 2 Residual Valve
- 3 Pump Regulator Valve
- 4 Load Sense Port

Transmission Control Module Harness (W11) Wiring Diagram (S.N. 200537-200926)



TX1072653

Transmission Control Module Harness (W11) Wiring Diagram



Thank you very much
for your reading.
Please click here
to get more information.