

John Deere 250D, 300D Ser.2 Articulated Dump Truck (SN:626761-642000) Service Repair Manual (TM11517)

332 Skid Steer Loader,
CT332 Compact Track
Loader Repair



REPAIR TECHNICAL MANUAL
Loader models 332, CT332
TM2212 06 SEP 14 (ENGLISH)

For complete service information also see:

332 Skid Steer Loader, CT332 Compact Track Loader Diagnostic	TM2211
Alternators and Starting Motors	CTM77
Super Caddy Oil Cleanup Procedure	CTM310
POWERTECH 2.4 L & 3.0 L Diesel Engines	CTM301
120 Series Hydraulic Pumps	CTM120519
120 Series Hydraulic Motors	

PDF  **DOWNLOAD** 

John Deere Commercial Worksite Products
Printed by Belgreen



TM2212

Covers: 250D,(SN:626761-642000),300D,(SN:626761-642000)

Type: Service Manual

Language: English

Pages: 703

Format: PDF

Features: Bookmarked, searchable, printable

Compatibility: Windows/Mac/Tablet/Mobile

This service manual contains important information for the maintenance, troubleshooting and servicing of the **John Deere 250D, 300D Ser.2 Articulated Dump Truck (SN:626761-642000) Service Repair Manual (TM11517)**

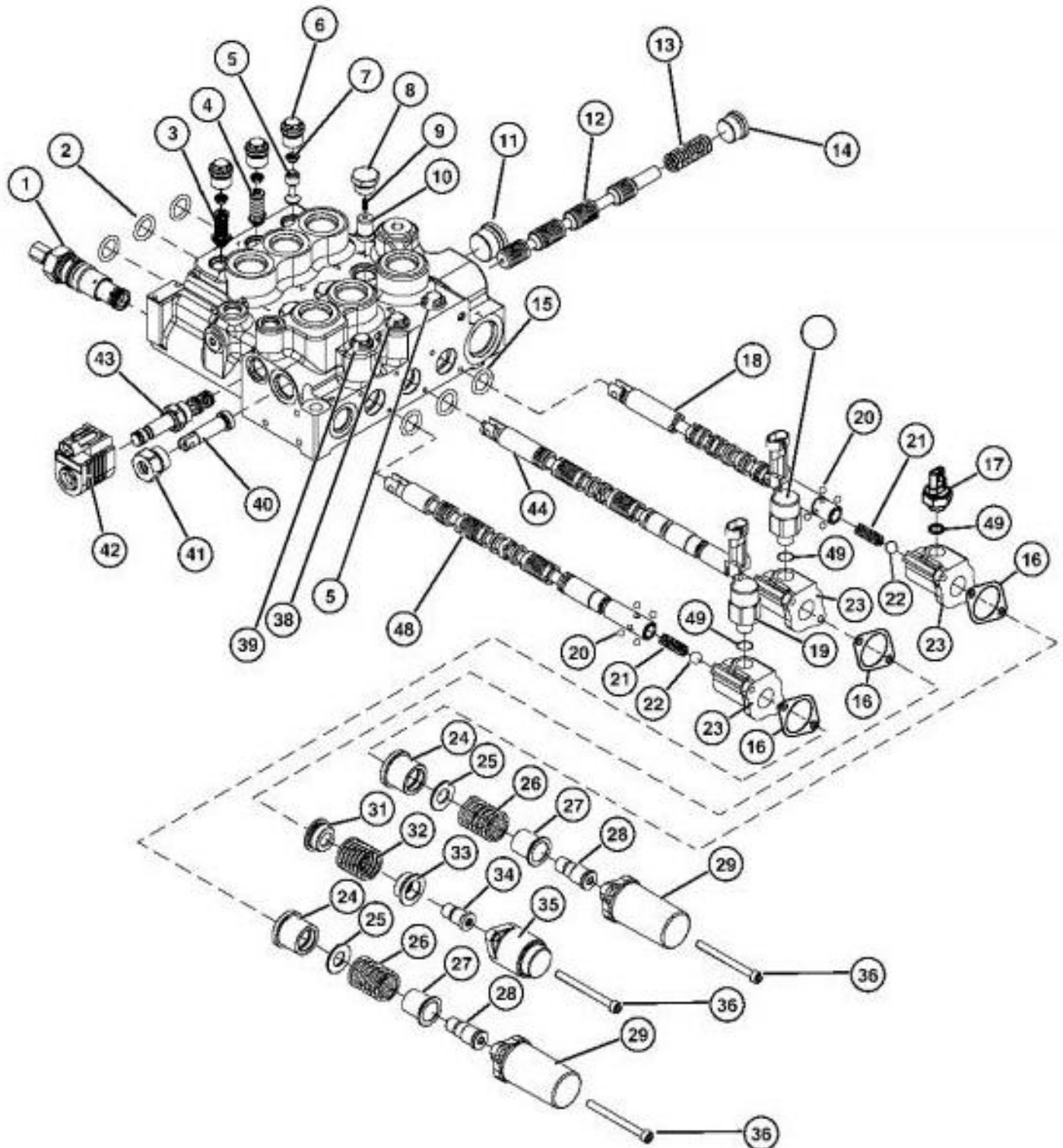
In this manual you will find detailed specifications, illustrations, schematics, diagrams and step-by-step procedures to properly service and diagnose the machine to the manufacturer's standards.

Contents:

- General Information
- Specifications
- Serial Number Location
- Engine Specifications
- Engine Diagnostics
- Engine Tests and Adjustments
- Engine Repair
- Power Train
- Transmission
- Axles
- Differential
- PTO
- Hydraulic System
- Electrical System
- Electrical Tests and Diagnostics
- Wiring Diagram / Schematic
- Ignition and Charging
- Steering
- Brakes
- Wheels
- Operator's Platform
- Body Panels
- Disassembly and Assembly
- Diagnostics, Tests and Adjustments
- Troubleshooting
- and much more...

Please note this manual is in **downloadable PDF format only**. If you have any questions about this product or would like to request sample pages, please contact us and reference the product name or SKU.

Control Valve Disassemble and Assemble—Skid Steer Loader (Hand Control Models S.N. —111091; Foot Control Models S.N. —113348)



T199865

Control Valve

LEGEND:

- 1 System Relief Valve
- 2 O-Ring (3 used)
- 3 Boom Down Circuit Relief and Anticavitation Valve



Thank you very much
for your reading.
Please click here
to get more information.