

John Deere 250GLC (T2/S2) Excavator Diagnostic, Operation and Test Service Manual (TM13078X19)

250GLC Excavator Diagnostic

OPERATION AND TEST MANUAL

T2/S2 models 250GLC (PIN: 1F9250GX__D608001— ; 1F9250GX__C608001—)

TM13078X19 06JAN16 (ENGLISH)

For complete service information also see:

250GLC Excavator (PIN: 1F9250GX__D608001-; 1F9250GX__C608001-) TM13079X19

JDLink (MTG) Technical Manual TM114519

PowerTech E 4.5 and 6.8L Diesel Engines Level 16 Electronic Fuel System With Denso HPCR CTM502

PowerTech 4.5L Tier 1/Stage I, Tier 2/Stage II, Tier 3/Stage IIIA, Tier 3/Stage III, (Base Engine

PDF



DOWNLOAD



John Deere Construction and Forestry

Type: Service Manual

Language: English

Pages: 953

Format: PDF

Features: Bookmarked, searchable, printable

Compatibility: Windows/Mac/Tablet/Mobile

This service manual contains important information for the maintenance, troubleshooting and servicing of the **John Deere 250GLC (T2/S2) Excavator Diagnostic, Operation and Test Service Manual (TM13078X19)**

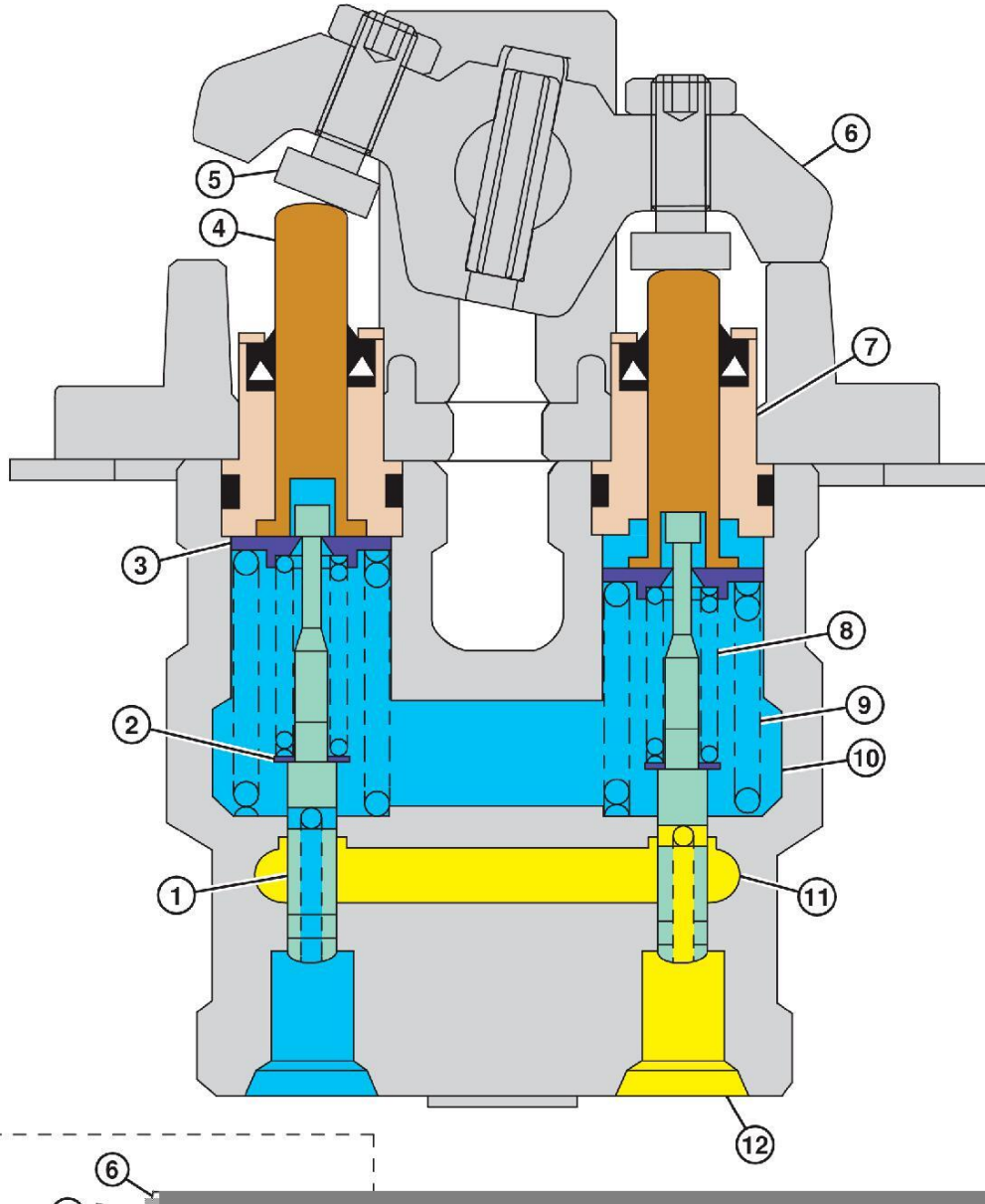
In this manual you will find detailed specifications, illustrations, schematics, diagrams and step-by-step procedures to properly service and diagnose the machine to the manufacturer's standards.

Contents:

- General Information
- Specifications
- Serial Number Location
- Engine Specifications
- Engine Diagnostics
- Engine Tests and Adjustments
- Engine Repair
- Power Train
- Transmission
- Axles
- Differential
- PTO
- Hydraulic System
- Electrical System
- Electrical Tests and Diagnostics
- Wiring Diagram / Schematic
- Ignition and Charging
- Steering
- Brakes
- Wheels
- Operator's Platform
- Body Panels
- Disassembly and Assembly
- Diagnostics, Tests and Adjustments
- Troubleshooting
- and much more...

Please note this manual is in **downloadable PDF format only**. If you have any questions about this product or would like to request sample pages, please contact us and reference the product name or SKU.

Travel Pilot Control Valve Operation





Thank you very much
for your reading.
Please click here
to get more information.