

# John Deere 260E, 310E Articulated Dump Truck (SN. D677827-) Repair Technical Manual (TM13844X19)

444K 4WD Loader (S.N.  
642101—670307) with  
Engine 4045HDW56 (iT4)  
Repair



## REPAIR MANUAL

**4DW Loaders with Engine 4045HDW56 (iT4) models 444K ( PIN:  
1DW444K\*\*\*E642101-670307)**

TM12091 22 FEB 16 (ENGLISH)

**For complete service information also see:**

444K 4WD Loaders (S.N. 642101-670307) with Engines 4045HDW56 (iT4)  
Diagnostic

TM12089

JDLink (MTG) Technical Manual

TM114519

120 Series Hydraulic Cylinders

CTM120519

4045 PowerTech D  
4/Stage IIIB) Level

120 Series Hydraulic Cylinder

125 Series Hydraulic Cylinder

**PDF**



**DOWNLOAD**



John Deere Construction and Forestry  
Printed by Belgreen



**Covers:** 260E,1DW260EX\_,\_D677827(???)?,310E,1DW310EX\_,\_D677827

**Type:** Service Manual

**Language:** English

**Pages:** 318

**Format:** PDF

**Features:** Bookmarked, searchable, printable

**Compatibility:** Windows/Mac/Tablet/Mobile

This service manual contains important information for the maintenance, troubleshooting and servicing of the **John Deere 260E, 310E Articulated Dump Truck (SN. D677827-) Repair Technical Manual (TM13844X19)**

In this manual you will find detailed specifications, illustrations, schematics, diagrams and step-by-step procedures to properly service and diagnose the machine to the manufacturer's standards.

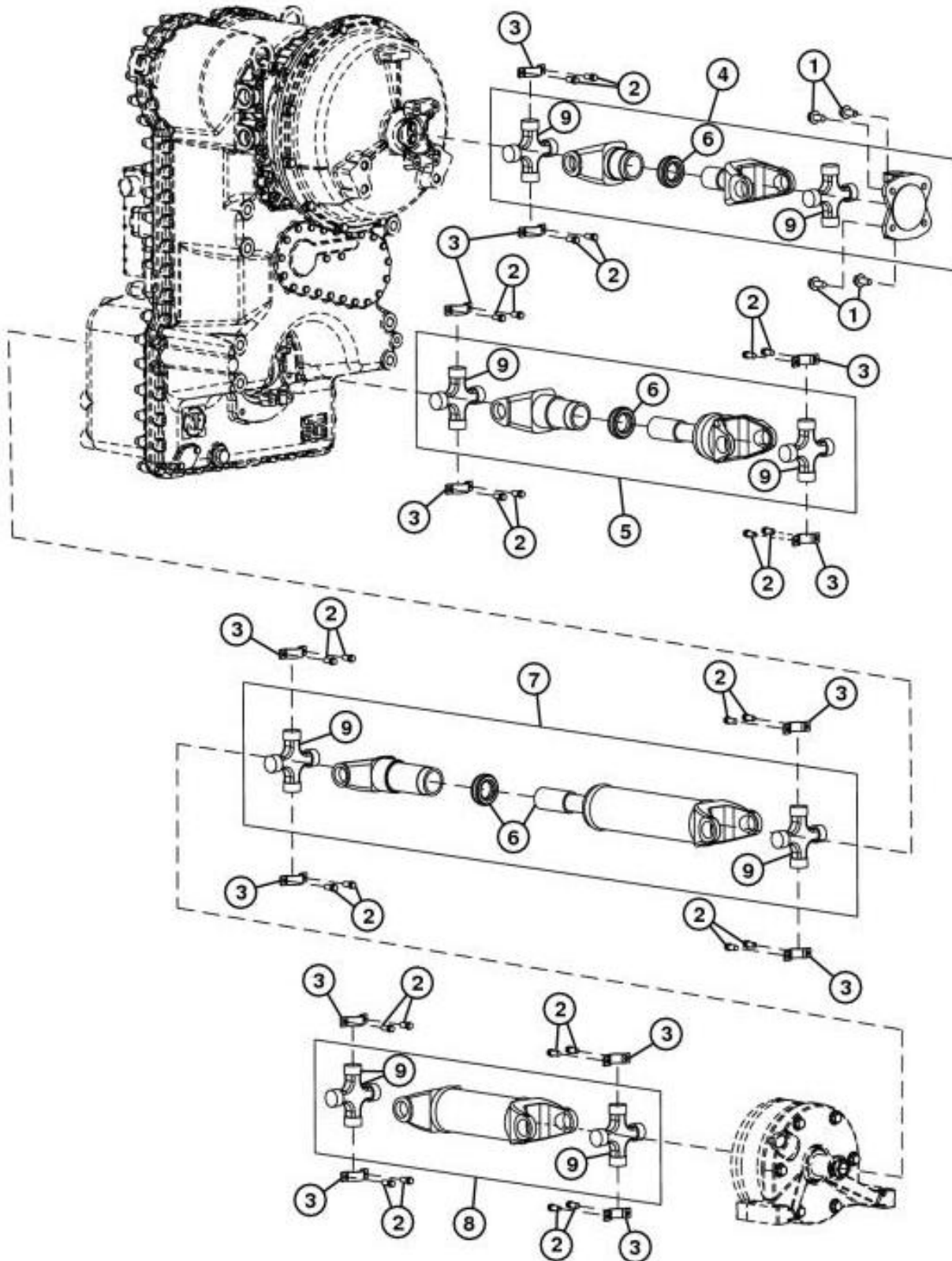
**Contents:**

- General Information
- Specifications
- Serial Number Location
- Engine Specifications
- Engine Diagnostics
- Engine Tests and Adjustments
- Engine Repair
- Power Train
- Transmission
- Axles
- Differential
- PTO
- Hydraulic System
- Electrical System
- Electrical Tests and Diagnostics
- Wiring Diagram / Schematic
- Ignition and Charging
- Steering
- Brakes
- Wheels
- Operator's Platform
- Body Panels
- Disassembly and Assembly
- Diagnostics, Tests and Adjustments
- Troubleshooting
- and much more...

Please note this manual is in **downloadable PDF format only**. If you have any questions about this product or would like to request sample pages, please contact us and reference the product name or SKU.

## Group 0225 - Input Drive Shafts and U-joints

### Universal Joint and Drive Shaft Remove and Install



TX1021732

#### Universal Joint and Drive Shaft Remove and Install

##### LEGEND:

- 1 Engine Shaft to Engine Cap Screw
- 2 Universal Joint Cap Screw



Thank you very much  
for your reading.  
Please click here  
to get more information.