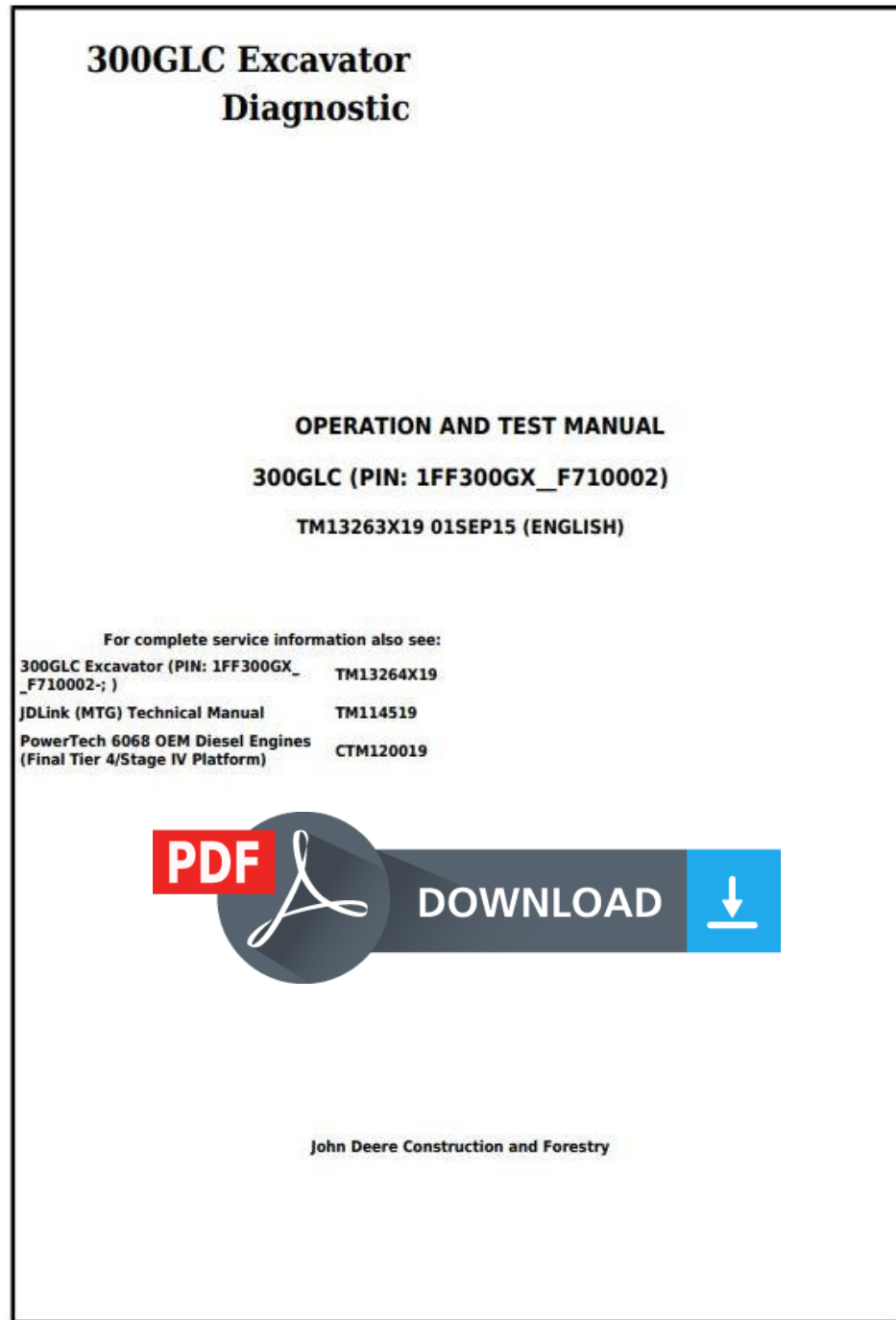


John Deere 300GLC Excavator Diagnostic, Operation and Test Manual (TM13263X19)



Covers: 300GLC,1FF300GX_F710002-)

Type: Service Manual

Language: English

Pages: 1072

Format: PDF

Features: Bookmarked, searchable, printable

Compatibility: Windows/Mac/Tablet/Mobile

This service manual contains important information for the maintenance, troubleshooting and servicing of the **John Deere 300GLC Excavator Diagnostic, Operation and Test Manual (TM13263X19)**

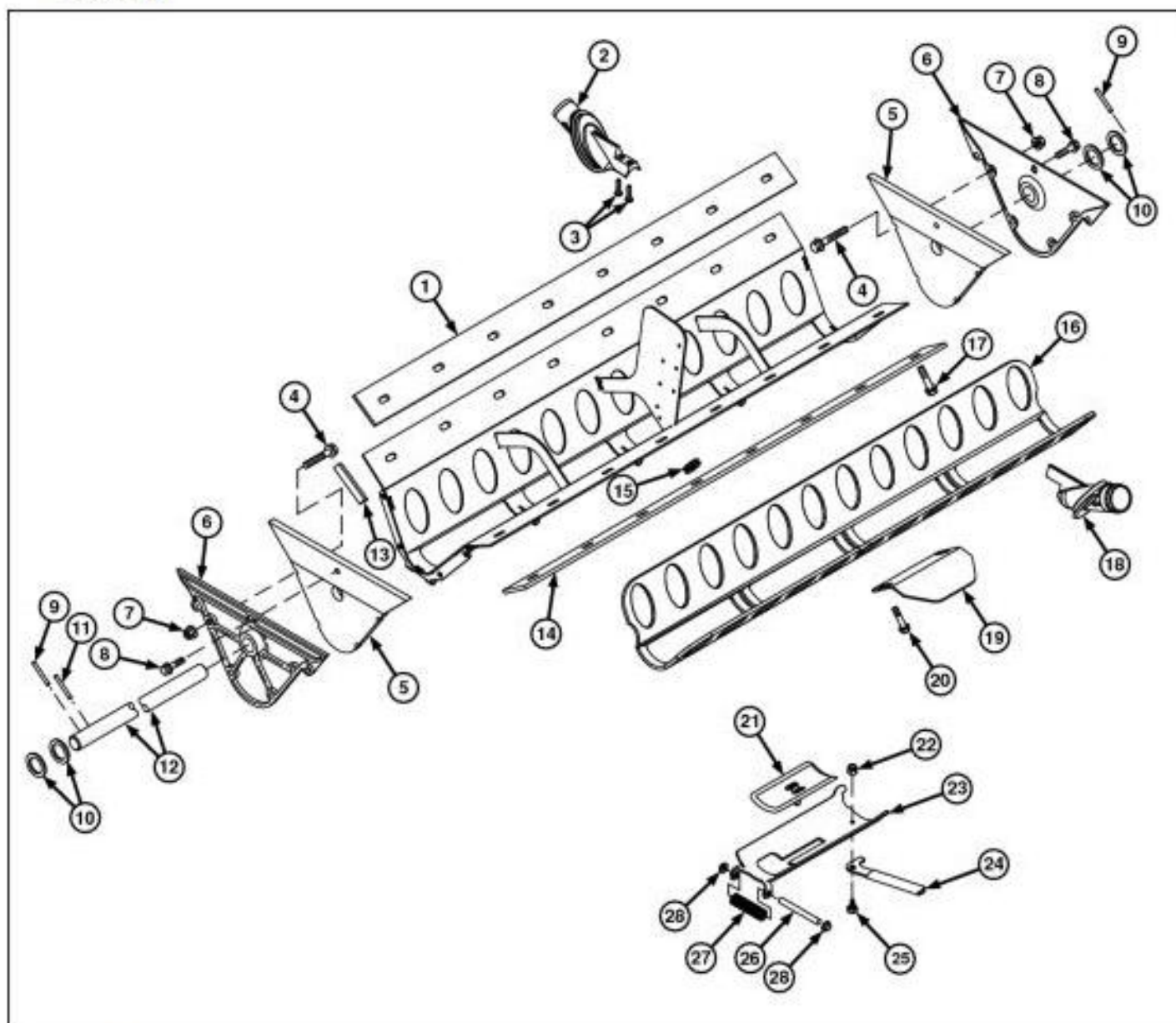
In this manual you will find detailed specifications, illustrations, schematics, diagrams and step-by-step procedures to properly service and diagnose the machine to the manufacturer's standards.

Contents:

- General Information
- Specifications
- Serial Number Location
- Engine Specifications
- Engine Diagnostics
- Engine Tests and Adjustments
- Engine Repair
- Power Train
- Transmission
- Axles
- Differential
- PTO
- Hydraulic System
- Electrical System
- Electrical Tests and Diagnostics
- Wiring Diagram / Schematic
- Ignition and Charging
- Steering
- Brakes
- Wheels
- Operator's Platform
- Body Panels
- Disassembly and Assembly
- Diagnostics, Tests and Adjustments
- Troubleshooting
- and much more...

Please note this manual is in **downloadable PDF format only**. If you have any questions about this product or would like to request sample pages, please contact us and reference the product name or SKU.

Repair Central Commodity System Seed Tank Manifold (with Plastic End Plates)



CCS Manifold

LEGEND:

1	Seal
2	Nozzle
3	Cap Screws (2 per assembled nozzle)
4	Cap Screw (8 used)
5	Seal
6	End Plate
7	Nut (8 used)
8	Cap Screw (2 used)
9	Pin (2 used)
10	Washers (4 used)
11	Pin
12	Agitator Shaft
13	Corner Seal (4 used)
14	Seal
15	Grommet
16	Seal
17	Cap Screw
18	Nozzle
19	Hold-Down Bracket



Thank you very much
for your reading.
Please click here
to get more information.