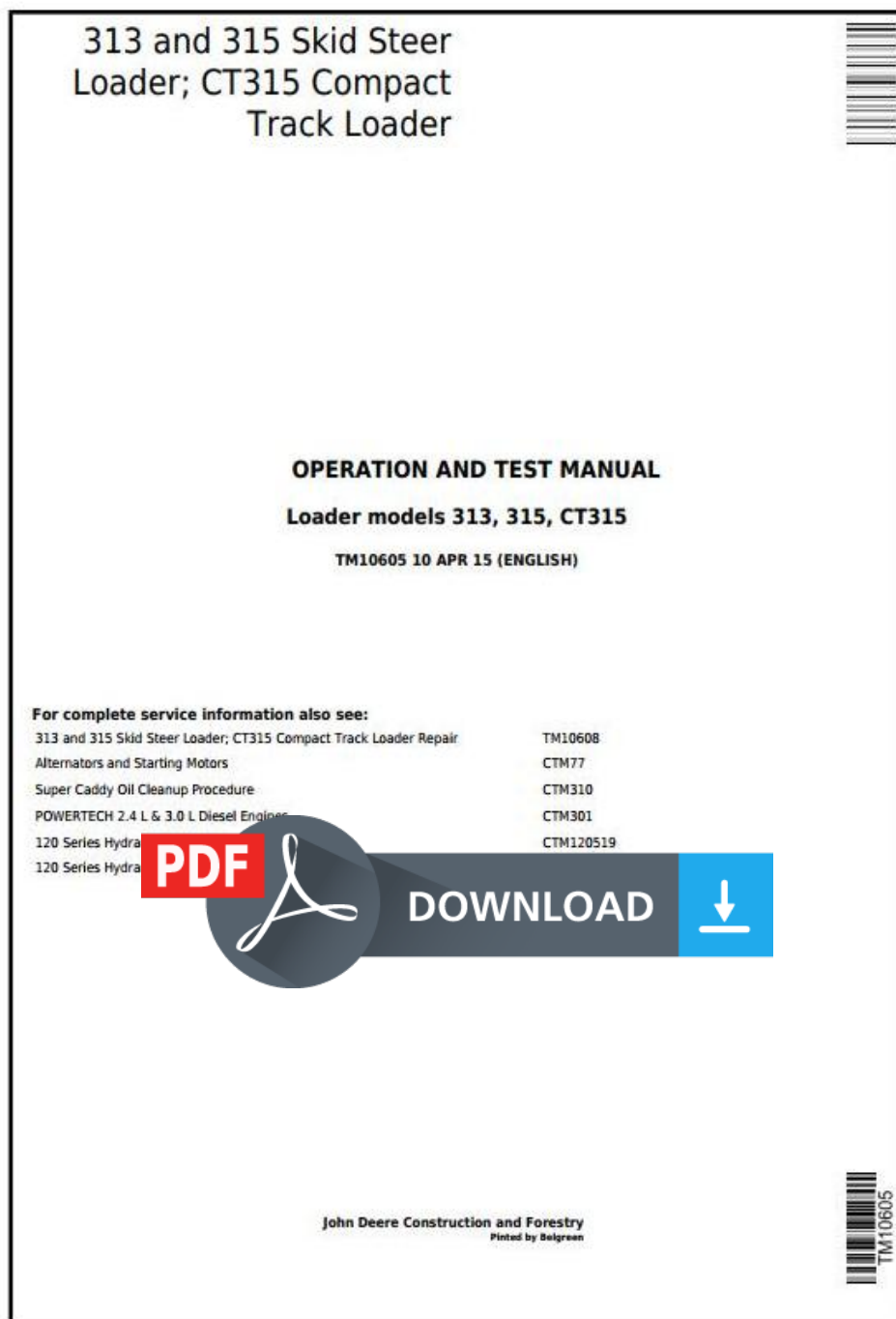


# John Deere 313, 315 Skid Steer Loader; CT315 Compact Track Loader Diagnostic Service Manual TM10605



**Covers:** 313,315,CT315

**Type:** Service Manual

**Language:** English

**Pages:** 398

**Format:** PDF

**Features:** Bookmarked, searchable, printable

**Compatibility:** Windows/Mac/Tablet/Mobile

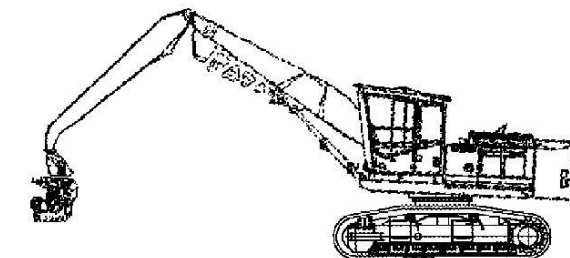
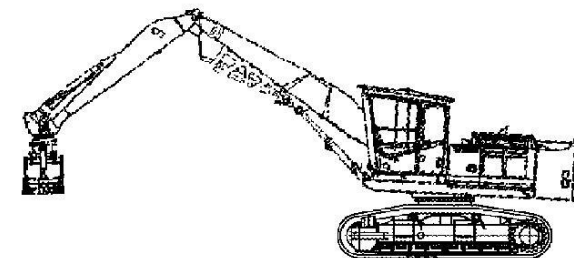
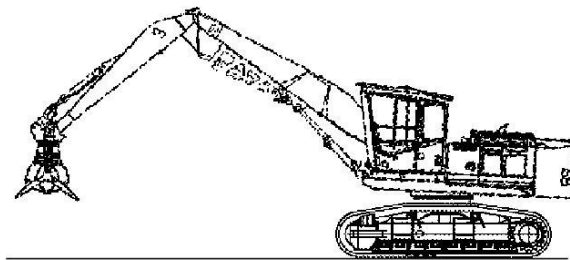
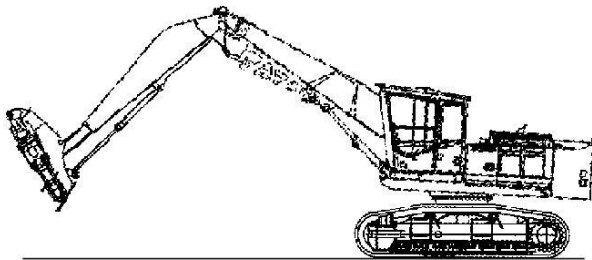
This service manual contains important information for the maintenance, troubleshooting and servicing of the **John Deere 313, 315 Skid Steer Loader; CT315 Compact Track Loader Diagnostic Service Manual TM10605**

In this manual you will find detailed specifications, illustrations, schematics, diagrams and step-by-step procedures to properly service and diagnose the machine to the manufacturer's standards.

**Contents:**

- General Information
- Specifications
- Serial Number Location
- Engine Specifications
- Engine Diagnostics
- Engine Tests and Adjustments
- Engine Repair
- Power Train
- Transmission
- Axles
- Differential
- PTO
- Hydraulic System
- Electrical System
- Electrical Tests and Diagnostics
- Wiring Diagram / Schematic
- Ignition and Charging
- Steering
- Brakes
- Wheels
- Operator's Platform
- Body Panels
- Disassembly and Assembly
- Diagnostics, Tests and Adjustments
- Troubleshooting
- and much more...

Please note this manual is in **downloadable PDF format only**. If you have any questions about this product or would like to request sample pages, please contact us and reference the product name or SKU.

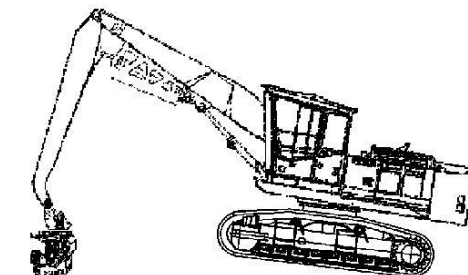
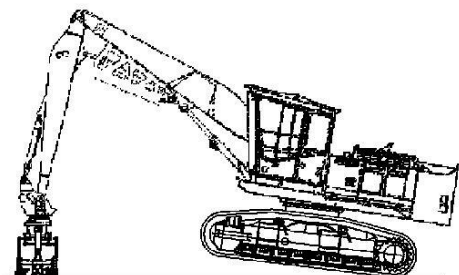
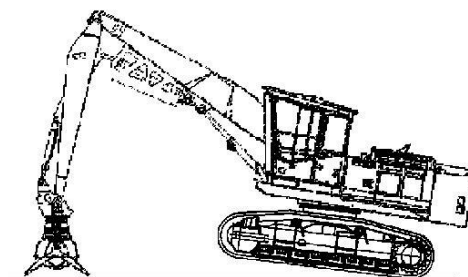
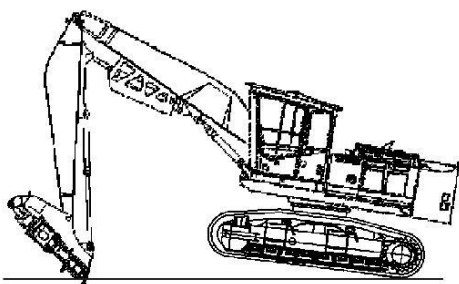


5. **TX1215993**

TX1215993-UN: Machine Position With Attachment Off Ground

Move boom and arm to the position shown with attachment off the ground.

6. Turn dial indicator to zero.



7. **TX1215994**

TX1215994-UN: Machine Position for Check

Lower the boom to raise front idlers off the ground approximately 500 mm (20 in).

8. Record dial indicator readings.

Item	Measurement	Specification
Swing Bearing	Play (normal)	0.20—1.25 mm 0.008—0.049 in
Swing Bearing	Play (maximum allowable)	3.05 mm 0.12 in



Thank you very much  
for your reading.  
Please click here  
to get more information.