

John Deere 316GR and 318G Skid Steer Loader Operation & Test Technical Service Manual (TM13856X19)

316GR and 318G Skid Steer Loader Operation and Test (Manual Controls)

(PIN: 1T0316G__G298752—;
PIN: 1T0318G__G298752—)



JOHN HARE



COLLECTION

OPERATION & TEST TECHNICAL MANUAL 316GR and 318G Skid Steer Loader

(PIN: 1T0316G__G298752—; PIN: 1T0318G__G298752—)

TM13856X19 01DEC18 (ENGLISH)

For complete service information also see:

4TNV94T and 4TNV96HT Diesel Engines (Interim Tier 4/
Stage IIIB platform) tm136319
316GR and 318G Skid Steer Loader (Manual
Controls)..... tm13856X19
316GR and 318G Skid Steer Loader (Manual
Hydraulic Cylinders).....



Worldwide Construction and
Forestry Division

Covers: 316GR,1T0316G__,G298752(???,),318G,1T0318G__,G298752(???)

Type: Service Manual

Language: English

Pages: 472

Format: PDF

Features: Bookmarked, searchable, printable

Compatibility: Windows/Mac/Tablet/Mobile

This service manual contains important information for the maintenance, troubleshooting and servicing of the **John Deere 316GR and 318G Skid Steer Loader Operation & Test Technical Service Manual (TM13856X19)**

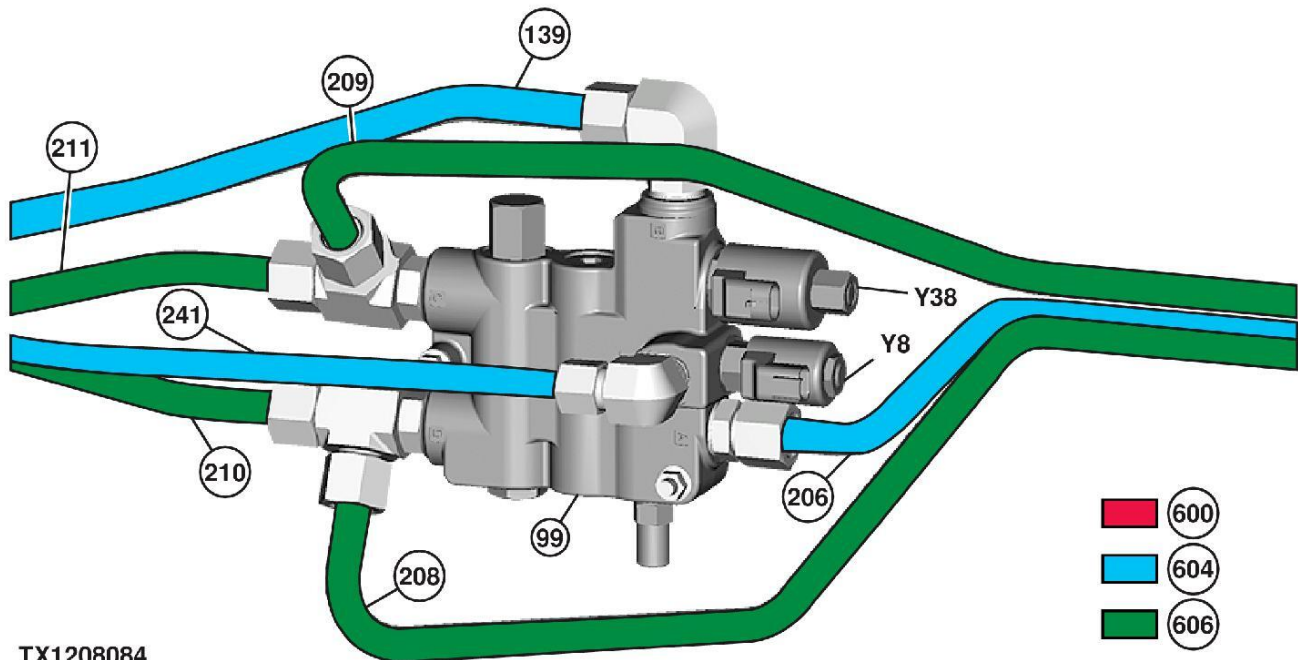
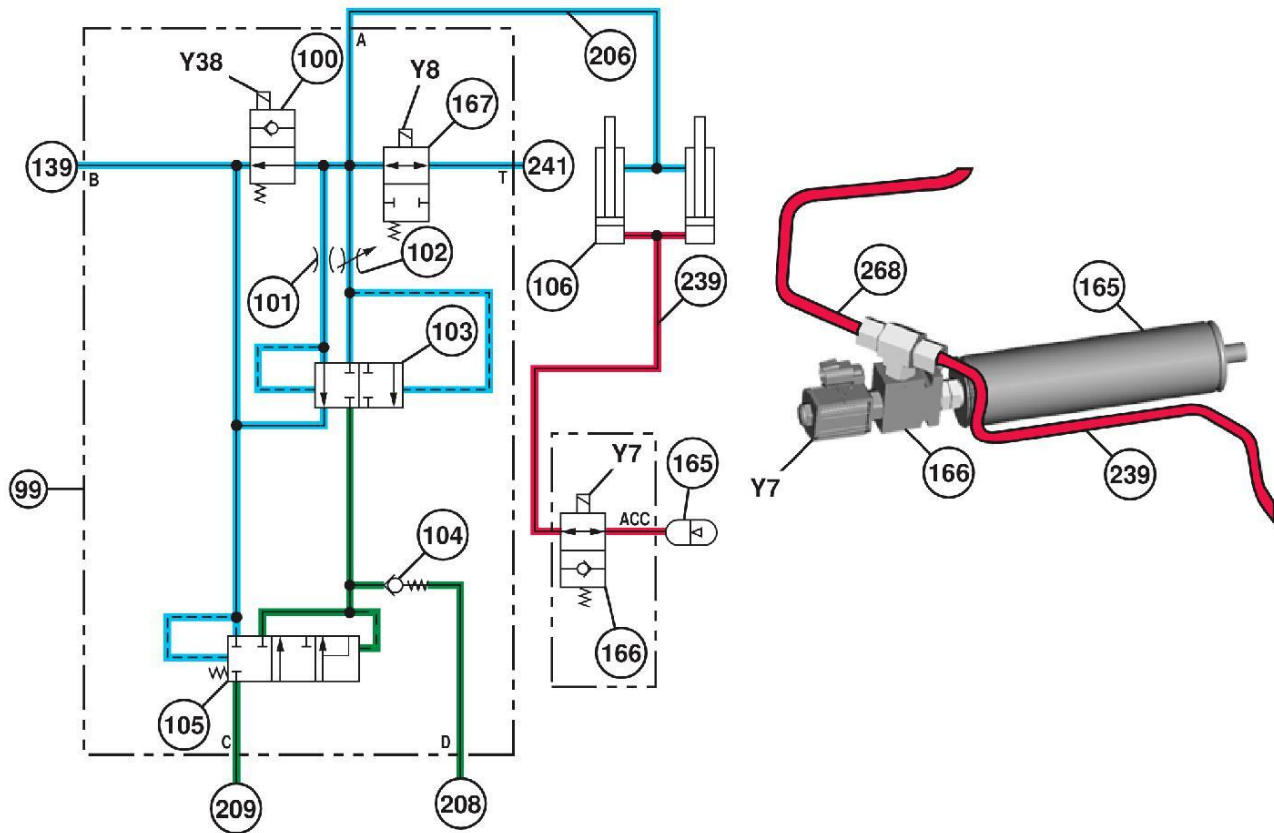
In this manual you will find detailed specifications, illustrations, schematics, diagrams and step-by-step procedures to properly service and diagnose the machine to the manufacturer's standards.

Contents:

- General Information
- Specifications
- Serial Number Location
- Engine Specifications
- Engine Diagnostics
- Engine Tests and Adjustments
- Engine Repair
- Power Train
- Transmission
- Axles
- Differential
- PTO
- Hydraulic System
- Electrical System
- Electrical Tests and Diagnostics
- Wiring Diagram / Schematic
- Ignition and Charging
- Steering
- Brakes
- Wheels
- Operator's Platform
- Body Panels
- Disassembly and Assembly
- Diagnostics, Tests and Adjustments
- Troubleshooting
- and much more...

Please note this manual is in **downloadable PDF format only**. If you have any questions about this product or would like to request sample pages, please contact us and reference the product name or SKU.

Ride Control Operation—If Equipped



TX1208084

TX1208084-UN: Ride Control Operation (shown activated)

LEGEND:

- | | | |
|--|---|--|
| <ul style="list-style-type: none"> 99-Self Leveling Valve 100-Self Leveling Solenoid Spool 101-Orifice 102-Adjustable Orifice 103-Flow Divider Valve 104-Check Valve 105-Unloader Valve 106-Boom Cylinder (2 used) 139-Hydraulic Control Valve (boom lower port)-to-Self Leveling Valve (port B) Line | <ul style="list-style-type: none"> 165-Ride Control Accumulator 166-Ride Control Accumulator Valve 167-Ride Control Reservoir Valve 206-Self Leveling Valve (port A)-to-Boom Cylinder (rod end) Line 208-Self Leveling Valve (port D)-to-Bucket Cylinder (head end) Line 209-Self Leveling Valve (port C)-to-Bucket Cylinder (rod end) Line | <ul style="list-style-type: none"> 210-Hydraulic Control Valve (bucket dump port)-to-Self Leveling Valve (port D) Line 211-Hydraulic Control Valve (bucket curl port)-to-Self Leveling Valve (port C) Line 239-Ride Control Valve-to-Boom Cylinder (rod end) Line 241-Self Leveling Valve (port T)-to-Hydraulic Oil Reservoir Line 268-Ride Control Valve-to-Boom Lowering Valve Line |
|--|---|--|



Thank you very much
for your reading.
Please click here
to get more information.