

John Deere 326E (SN. J247388-) Skid Steer Loader with EH Controls Service Repair Manual (TM13044X19)

**859MH Tracked
Harvesters (Open-Loop
Hydraulic Drive)
Operation and Test**
(PIN: 1T0859MH__F293917—;
PIN: 1T0859MH__L343918—)



JOHN HARE



COLLECTION

OPERATION & TEST TECHNICAL MANUAL
859MH Tracked Harvesters
(Open-Loop Hydraulic Drive)
(PIN: 1T0859MH__F293917—; PIN: 1T0859MH__L343918—)

TM14095X19 01DEC18 (ENGLISH)

For complete service information also see:

6090 PowerTech™ OEM Diesel Engines (F555 and F555A IV platform)..... 17719
803MH, 853MH and 859MH Tracked Harvesters (Open-Loop Hydraulic Drive).....
Hydraulic Cylinders.....



Worldwide Construction and
Forestry Division

Covers: 326E, 1T0326E***J247388-)

Type: Service Manual

Language: English

Pages: 348

Format: PDF

Features: Bookmarked, searchable, printable

Compatibility: Windows/Mac/Tablet/Mobile

This service manual contains important information for the maintenance, troubleshooting and servicing of the **John Deere 326E (SN. J247388-) Skid Steer Loader with EH Controls Service Repair Manual (TM13044X19)**

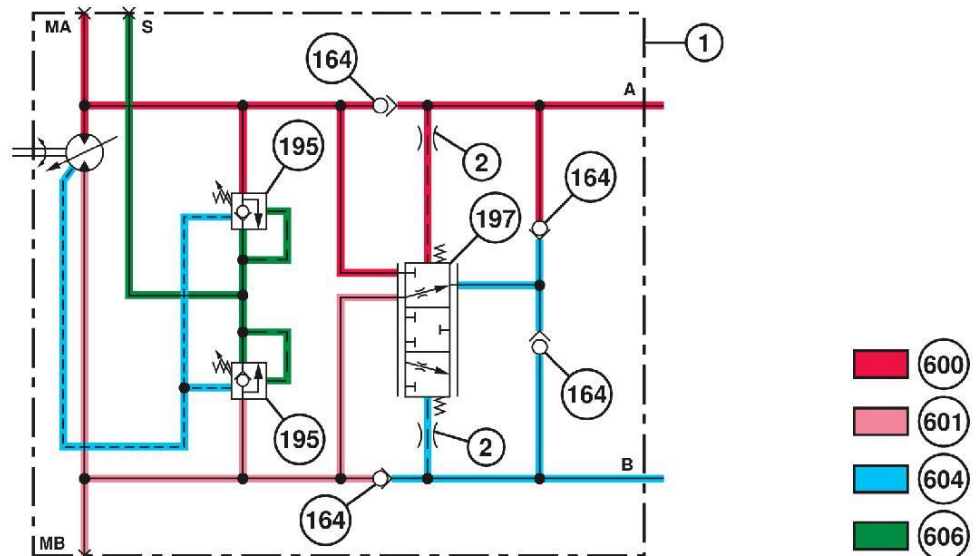
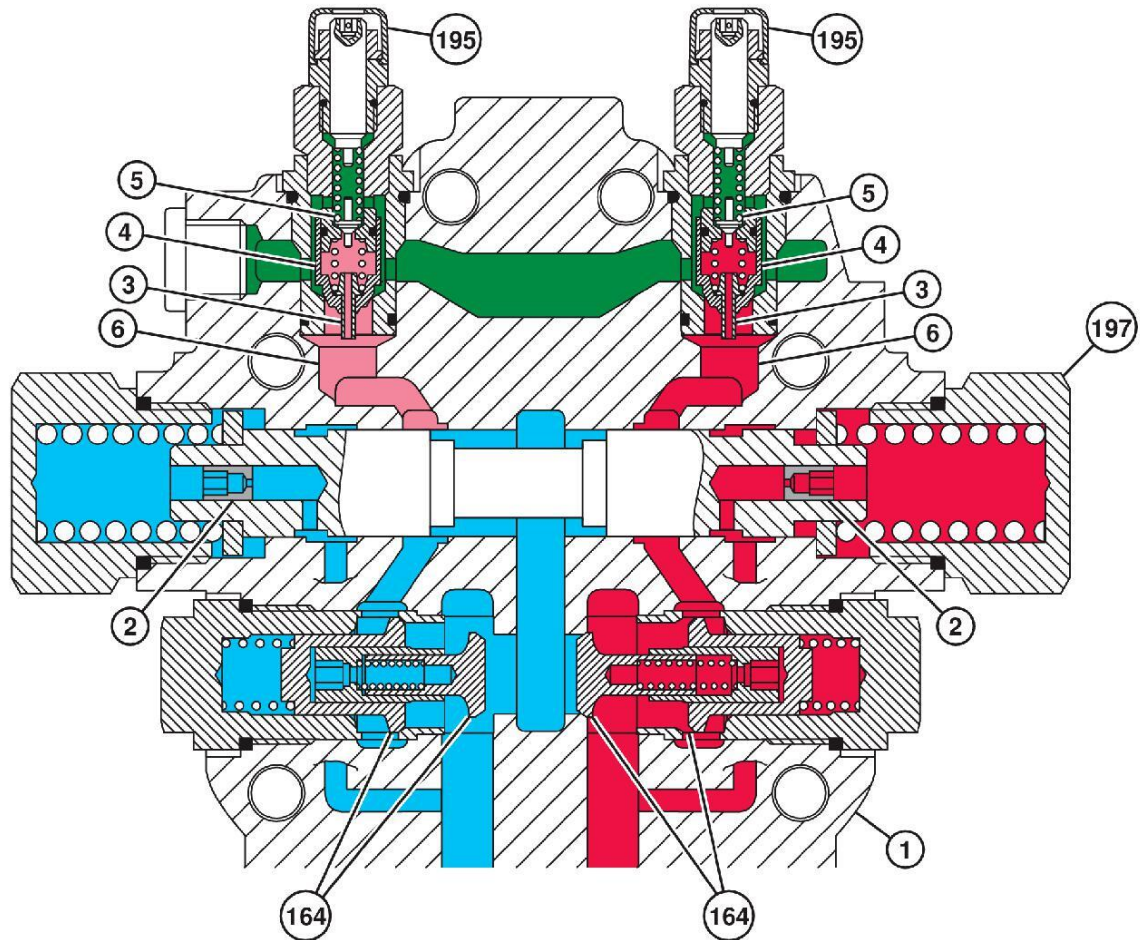
In this manual you will find detailed specifications, illustrations, schematics, diagrams and step-by-step procedures to properly service and diagnose the machine to the manufacturer's standards.

Contents:

- General Information
- Specifications
- Serial Number Location
- Engine Specifications
- Engine Diagnostics
- Engine Tests and Adjustments
- Engine Repair
- Power Train
- Transmission
- Axles
- Differential
- PTO
- Hydraulic System
- Electrical System
- Electrical Tests and Diagnostics
- Wiring Diagram / Schematic
- Ignition and Charging
- Steering
- Brakes
- Wheels
- Operator's Platform
- Body Panels
- Disassembly and Assembly
- Diagnostics, Tests and Adjustments
- Troubleshooting
- and much more...

Please note this manual is in **downloadable PDF format only**. If you have any questions about this product or would like to request sample pages, please contact us and reference the product name or SKU.

Soft Start and Stop Operation



TX1168256

TX1168256-UN: Soft Start and Stop Operation (forward travel shown)

LEGEND:

1-Travel Motor (soft start and stop operation shown only)
 2-Orifice (2 used)
 3-Anticavitation Poppet Orifice (2 used)
 4-Anticavitation Poppet (2 used)

5-Relief Poppet (2 used)
 6-To Motor Rotating Group
 164-Anticavitation Check Valve (4 used)
 195-Travel Motor Crossover Relief Valve (2 used)

197-Counterbalance Valve
 600-High-Pressure Oil
 601-Medium Pressure Oil
 604-Return Oil
 606-Trapped Oil

Travel motors contain a series of valves to soften machine acceleration and deceleration. In turn valves protect travel motor circuit from over pressure, cavitation, and overrunning.



Thank you very much
for your reading.
Please click here
to get more information.