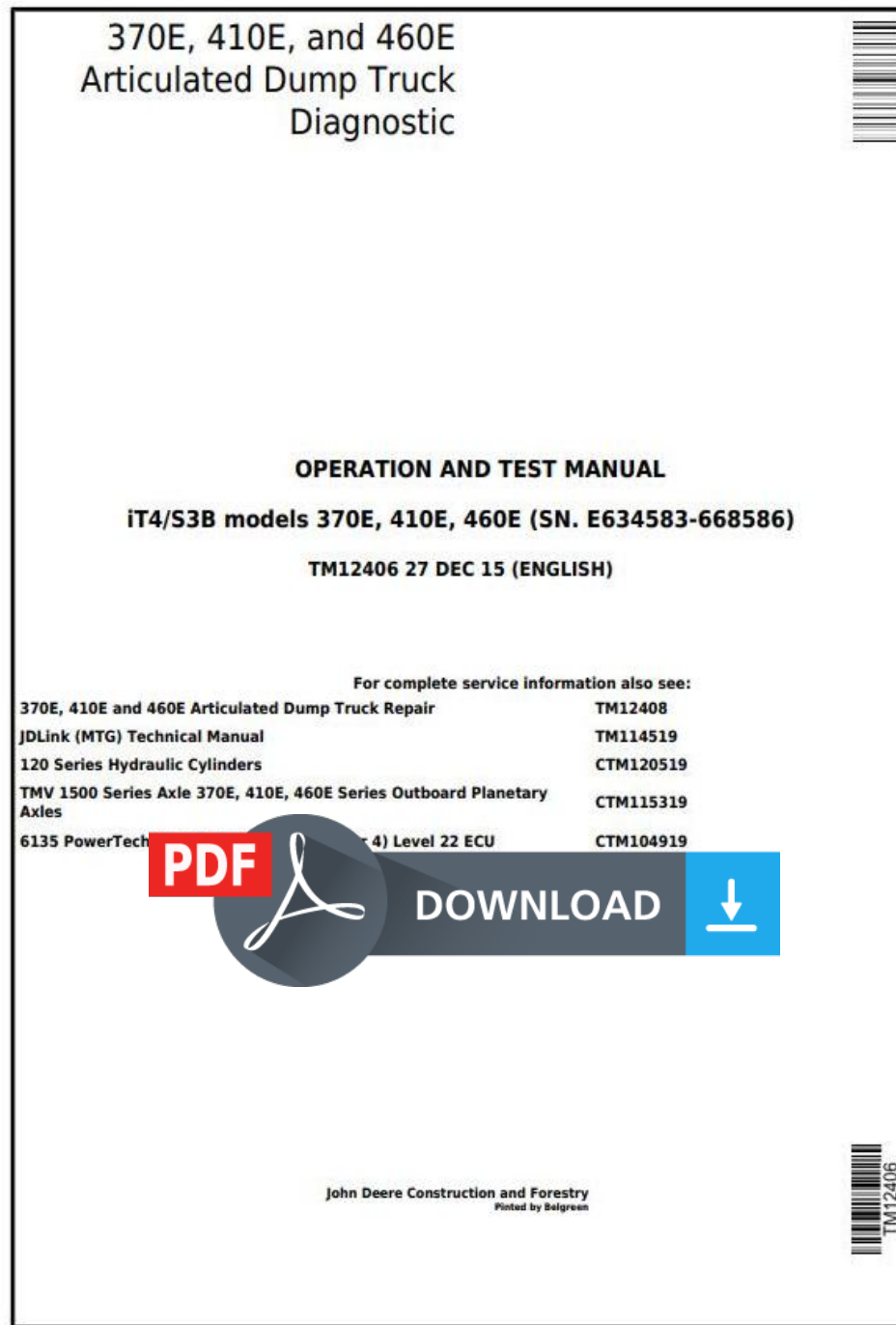


John Deere 326E Skid Steer Loader w. Manual Controls Diagnostic and Test Service Manual (TM13088X19)



Covers: 326E,1T0326E***J247388-)

Type: Service Manual

Language: English

Pages: 908

Format: PDF

Features: Bookmarked, searchable, printable

Compatibility: Windows/Mac/Tablet/Mobile

This service manual contains important information for the maintenance, troubleshooting and servicing of the **John Deere 326E Skid Steer Loader w. Manual Controls Diagnostic and Test Service Manual (TM13088X19)**

In this manual you will find detailed specifications, illustrations, schematics, diagrams and step-by-step procedures to properly service and diagnose the machine to the manufacturer's standards.

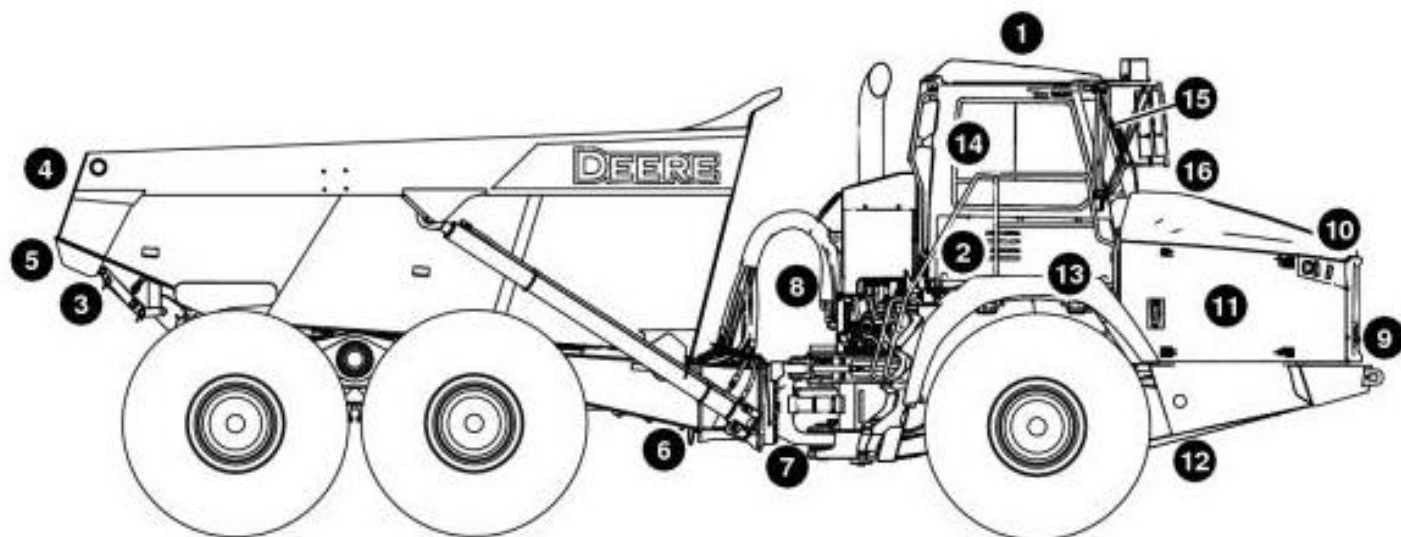
Contents:

- General Information
- Specifications
- Serial Number Location
- Engine Specifications
- Engine Diagnostics
- Engine Tests and Adjustments
- Engine Repair
- Power Train
- Transmission
- Axles
- Differential
- PTO
- Hydraulic System
- Electrical System
- Electrical Tests and Diagnostics
- Wiring Diagram / Schematic
- Ignition and Charging
- Steering
- Brakes
- Wheels
- Operator's Platform
- Body Panels
- Disassembly and Assembly
- Diagnostics, Tests and Adjustments
- Troubleshooting
- and much more...

Please note this manual is in **downloadable PDF format only**. If you have any questions about this product or would like to request sample pages, please contact us and reference the product name or SKU.

Group 01 - Safety

Safety and Operator Convenience Features



TX1105256

Safety Features

Please remember, the operator is the key to preventing accidents.

1. **ROPS/FOPS Cab Protection.** Structures designed to help protect the operator are certified to ISO, SAE, and OSHA. Enclosures also deflect sun and rain.
2. **Cab with Heater/Defroster.** Cab ventilation system circulates both outside and inside air through a filter for a clean working environment. Built-in defroster vents direct air flow for effective window defogging/deicing.
3. **Dump Body Service Lock.** A mechanical lock is provided for working on or around this machine with the dump body raised.
4. **Stop/Backup Lights.** Highly visible lights are standard equipment.
5. **Backup Alarm.** Alerts bystanders when reverse travel direction is selected by the operator.
6. **Independent Parking Brake.** Is mechanically engaged and hydraulically released. It engages whenever the engine stop switch is turned on or the park brake switch is activated.
7. **Articulation Locking Bar.** A self-storing mechanical lock is provided for transport or service.
8. **Secondary Steering.** Ground driven, continuously in operation. Secondary steering indicator light will light when active.
9. **Horn.** Standard horn is useful when driving or when signaling co-workers.
10. **Halogen Lights and Turn Signals.** High-intensity halogen drive/work lights and high-visibility turn signals are standard equipment.
11. **Engine Fan Guard.** A fan guard on both fan doors helps prevent contact with rotating fan blades.
12. **Bypass Start Protection.** Shielding over the starter terminals helps prevent dangerous bypass starting.
13. **Transmission Retarder.** Engages whenever the truck is in motion and the operator lets up on the accelerator.
14. **Seat Belt Retractors.** Help keep belts clean and convenient to use.
15. **Mirrors.** Large exterior mirrors on both sides offer the operator a view of activity behind the machine.
16. **Large Windshield Wiper with Washer.** Extra long wiper cleans large windshield area.

Recognize Safety Information



Thank you very much
for your reading.
Please click here
to get more information.