

John Deere 330G and 332G Skid Steer Loader Operation & Test Technical Service Manual (TM14061X19)

444J 4WD Loader (SN.
611275—) Diagnostic



OPERATION AND TEST MANUAL

4WD Loaders Mmodels 444J (SN. from 611275)

TM10228 22 FEB 16 (ENGLISH)

For complete service information also see:

JDLINK (MTG) Technical Manual	TM114519
444J Loader (S.N. 611275-) Repair	TM10243
Alternators and Starting Motors	CTM77
PowerTech E 4.5 and 6.8L Diesel Engines and 16 Electronic Fuel System With Denso HPCR	CTM502
PowerTech 4.5L & 6.8L Diesel Engines and 16 Electronic Fuel System With Denso HPCR	
Super Caddy Oil Cleanup Pro	
PowerTech 4.5 L & 6.8 L Diesel Engines and 16 Electronic Fuel System With Denso HPCR	
TeamMate III 1000, 1200, and 1400 Series Planetary Axles	CTM150
120 Series Hydraulic Cylinders	CTM120519
125 Series Hydraulic Cylinders	CTM109319
PowerTech 4.5L & 6.8L Diesel Engines Tier 1/Stage I, Tier 2/Stage II, Tier 3/Stage IIIA, Tier 3/Stage IIA Tier 3/Stage III, (Base Engine)	CTM104
JDLINK/ZXLINK Machine Monitoring System	CTM10006

PDF



DOWNLOAD



John Deere Construction and Forestry
Printed by Bolgreen



TM10228

Covers: 330G,1T0330G_,_F300253(???,332G,1T0332G_,_F300253??

Type: Service Manual

Language: English

Pages: 646

Format: PDF

Features: Bookmarked, searchable, printable

Compatibility: Windows/Mac/Tablet/Mobile

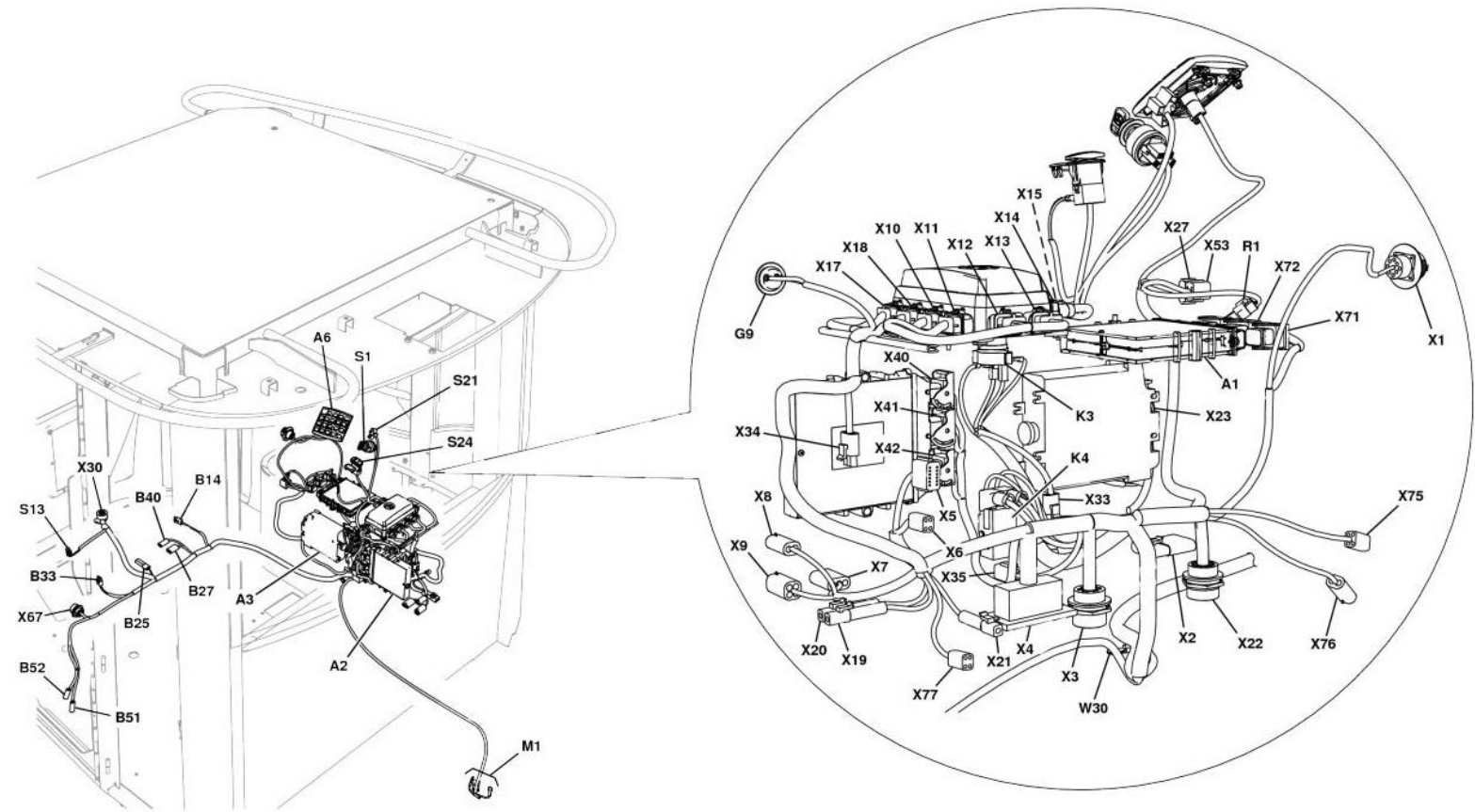
This service manual contains important information for the maintenance, troubleshooting and servicing of the **John Deere 330G and 332G Skid Steer Loader Operation & Test Technical Service Manual (TM14061X19)**

In this manual you will find detailed specifications, illustrations, schematics, diagrams and step-by-step procedures to properly service and diagnose the machine to the manufacturer's standards.

Contents:

- General Information
- Specifications
- Serial Number Location
- Engine Specifications
- Engine Diagnostics
- Engine Tests and Adjustments
- Engine Repair
- Power Train
- Transmission
- Axles
- Differential
- PTO
- Hydraulic System
- Electrical System
- Electrical Tests and Diagnostics
- Wiring Diagram / Schematic
- Ignition and Charging
- Steering
- Brakes
- Wheels
- Operator's Platform
- Body Panels
- Disassembly and Assembly
- Diagnostics, Tests and Adjustments
- Troubleshooting
- and much more...

Please note this manual is in **downloadable PDF format only**. If you have any questions about this product or would like to request sample pages, please contact us and reference the product name or SKU.



TX1016009
Load Center Harness (W3) Component Location



Thank you very much
for your reading.
Please click here
to get more information.