



# John Deere 350D, 400D S2 Articulated Dump Truck (SN.626763-642001) Diagnostic Service Manual TM11518

370E, 410E, and 460E  
Articulated Dump Truck  
Diagnostic



**OPERATION AND TEST MANUAL**  
**iT4/S3B models 370E, 410E, 460E (SN. E634583-668586)**  
**TM12406 27 DEC 15 (ENGLISH)**

For complete service information also see:

370E, 410E and 460E Articulated Dump Truck Repair	TM12408
JDLINK (MTG) Technical Manual	TM114519
120 Series Hydraulic Cylinders	CTM120519
TMV 1500 Series Axle 370E, 410E, 460E Series Outboard Planetary Axles	CTM115319
6135 PowerTech (4) Level 22 ECU	CTM104919

**PDF**  **DOWNLOAD** 

John Deere Construction and Forestry  
Printed by Belgroem



**Covers:** 350D,(SN.626763-642001),400D,(SN.626763-642001)

**Type:** Service Manual

**Language:** English

**Pages:** 1150

**Format:** PDF

**Features:** Bookmarked, searchable, printable

**Compatibility:** Windows/Mac/Tablet/Mobile

This service manual contains important information for the maintenance, troubleshooting and servicing of the **John Deere 350D, 400D S2 Articulated Dump Truck (SN.626763-642001) Diagnostic Service Manual TM11518**

In this manual you will find detailed specifications, illustrations, schematics, diagrams and step-by-step procedures to properly service and diagnose the machine to the manufacturer's standards.

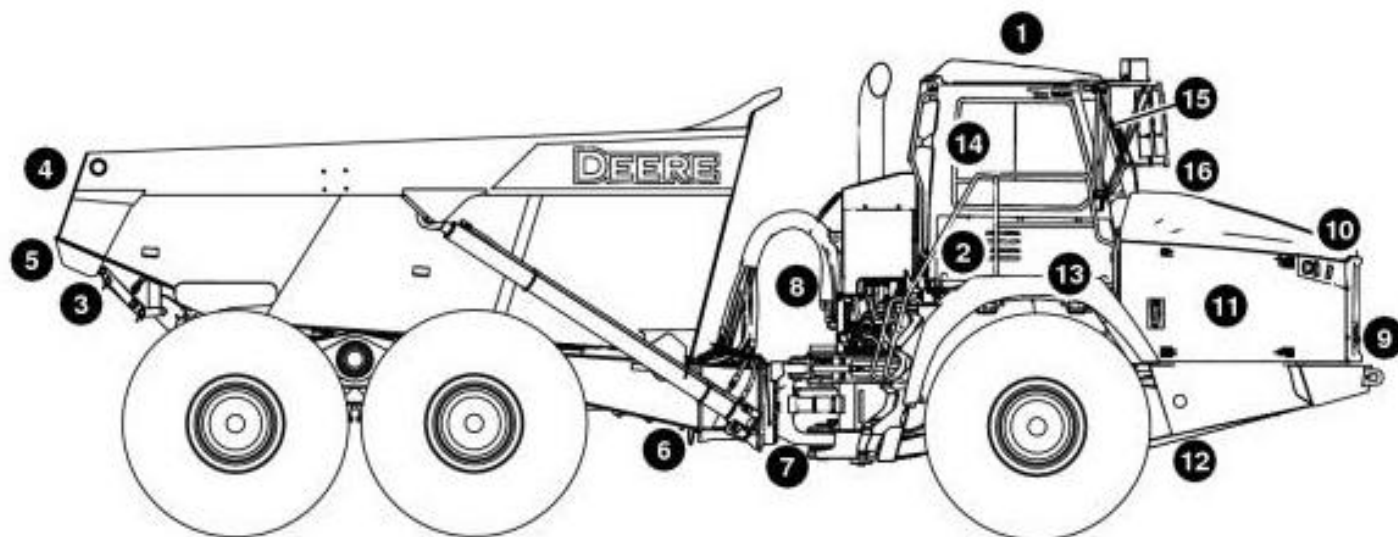
**Contents:**

- General Information
- Specifications
- Serial Number Location
- Engine Specifications
- Engine Diagnostics
- Engine Tests and Adjustments
- Engine Repair
- Power Train
- Transmission
- Axles
- Differential
- PTO
- Hydraulic System
- Electrical System
- Electrical Tests and Diagnostics
- Wiring Diagram / Schematic
- Ignition and Charging
- Steering
- Brakes
- Wheels
- Operator's Platform
- Body Panels
- Disassembly and Assembly
- Diagnostics, Tests and Adjustments
- Troubleshooting
- and much more...

Please note this manual is in **downloadable PDF format only**. If you have any questions about this product or would like to request sample pages, please contact us and reference the product name or SKU.

## Group 01 - Safety

### Safety and Operator Convenience Features



TX1105256

#### Safety Features

Please remember, the operator is the key to preventing accidents.

1. **ROPS/FOPS Cab Protection.** Structures designed to help protect the operator are certified to ISO, SAE, and OSHA. Enclosures also deflect sun and rain.
2. **Cab with Heater/Defroster.** Cab ventilation system circulates both outside and inside air through a filter for a clean working environment. Built-in defroster vents direct air flow for effective window defogging/deicing.
3. **Dump Body Service Lock.** A mechanical lock is provided for working on or around this machine with the dump body raised.
4. **Stop/Backup Lights.** Highly visible lights are standard equipment.
5. **Backup Alarm.** Alerts bystanders when reverse travel direction is selected by the operator.
6. **Independent Parking Brake.** Is mechanically engaged and hydraulically released. It engages whenever the engine stop switch is turned on or the park brake switch is activated.
7. **Articulation Locking Bar.** A self-storing mechanical lock is provided for transport or service.
8. **Secondary Steering.** Ground driven, continuously in operation. Secondary steering indicator light will light when active.
9. **Horn.** Standard horn is useful when driving or when signaling co-workers.
10. **Halogen Lights and Turn Signals.** High-intensity halogen drive/work lights and high-visibility turn signals are standard equipment.
11. **Engine Fan Guard.** A fan guard on both fan doors helps prevent contact with rotating fan blades.
12. **Bypass Start Protection.** Shielding over the starter terminals helps prevent dangerous bypass starting.
13. **Transmission Retarder.** Engages whenever the truck is in motion and the operator lets up on the accelerator.
14. **Seat Belt Retractors.** Help keep belts clean and convenient to use.
15. **Mirrors.** Large exterior mirrors on both sides offer the operator a view of activity behind the machine.
16. **Large Windshield Wiper with Washer.** Extra long wiper cleans large windshield area.

### Recognize Safety Information



Thank you very much  
for your reading.  
Please click here  
to get more information.