

John Deere 350D and 400D Articulated Dump Truck Service Repair Technical Manual (TM1941)

350D and 400D Articulated
Dump Truck
BELL—(200311-201811)
Tier2;
DW—(601341-608489)



REPAIR TECHNICAL MANUAL

Articulated Dump models 350D, 400D Bell-(200311—201811) DW-
(601341—608489)

TM1941 09 FEB 15 (ENGLISH)

For complete service information also see:

350D and 400D Articulated Dump Truck BELL—(200311-201811) Tier2;
DW—(601341-608489) Diagnostic

TM1940

Super Caddy Oil Cleanup Procedure

CTM310

120 Series Hydraulic

CTM120519

120 Series Hydraulic

COOLANT HEATER



John Deere Construction and Forestry
Printed by Belgreen



Covers: 350D,200311,201811,601341,608489,400D

Type: Service Manual

Language: English

Pages: 652

Format: PDF

Features: Bookmarked, searchable, printable

Compatibility: Windows/Mac/Tablet/Mobile

This service manual contains important information for the maintenance, troubleshooting and servicing of the **John Deere 350D and 400D Articulated Dump Truck Service Repair Technical Manual (TM1941)**

In this manual you will find detailed specifications, illustrations, schematics, diagrams and step-by-step procedures to properly service and diagnose the machine to the manufacturer's standards.

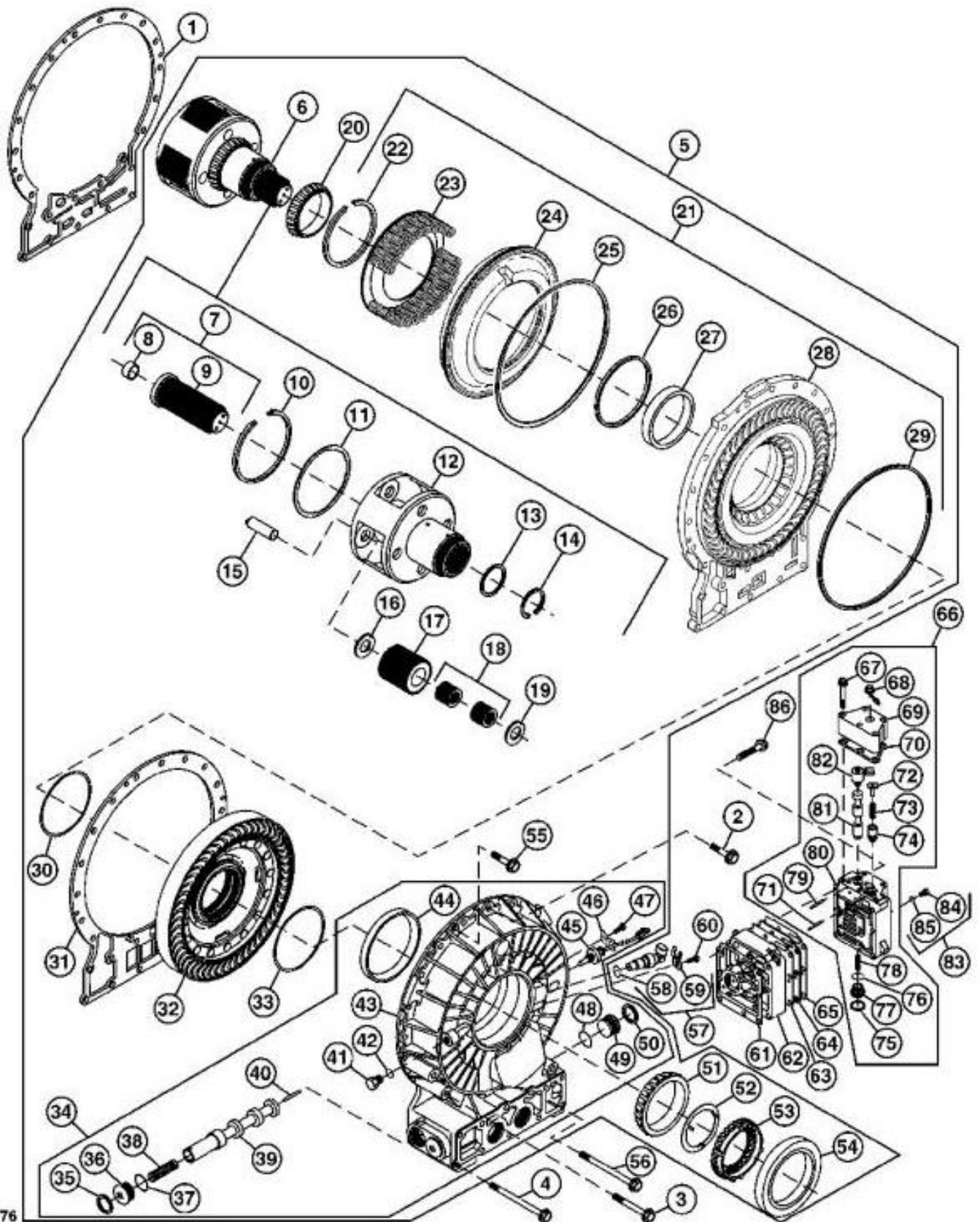
Contents:

- General Information
- Specifications
- Serial Number Location
- Engine Specifications
- Engine Diagnostics
- Engine Tests and Adjustments
- Engine Repair
- Power Train
- Transmission
- Axles
- Differential
- PTO
- Hydraulic System
- Electrical System
- Electrical Tests and Diagnostics
- Wiring Diagram / Schematic
- Ignition and Charging
- Steering
- Brakes
- Wheels
- Operator's Platform
- Body Panels
- Disassembly and Assembly
- Diagnostics, Tests and Adjustments
- Troubleshooting
- and much more...

Please note this manual is in **downloadable PDF format only**. If you have any questions about this product or would like to request sample pages, please contact us and reference the product name or SKU.

Disassemble and Assemble Retarder and P3 Planetary

[1] -



T144776

Retarder and P3 Planetary

LEGEND:

- | | |
|---|-------------------------|
| 1 | Retarder Housing Gasket |
| 2 | Cap Screw (12 used) |
| 3 | Cap Screw (2 used) |



Thank you very much
for your reading.
Please click here
to get more information.