

John Deere 350GLC PIN:1FF350GX_F809192 Excavator Diagnostic, Operation and Test Manual (TM13206X19)

160CLC Excavator Repair

REPAIR TECHNICAL MANUAL

None models 160CLC

TM1933 02JUL13 (ENGLISH)

For complete service information also see:

160CLC Excavator Diagnostic	TM1932
Alternators and Starting Motors	CTM77
PowerTech 4.5L and 6.8L Diesel Engines Level 12 Electronic Fuel System With Stanadyne DE10 Pump	CTM331
Super Caddy Oil Cleanup Procedure	CTM310
PowerTech 4.5L & 6.8L Diesel Engines Tier 1/Stage I, Tier 2/Stage II, Tier 3/Stage IIIA, Tier 4/Stage IIIB, Tier III, (Base Engine)	TM104
JDG10274 Ultrasonic Under Measurement Gauge	

PDF



DOWNLOAD



John Deere Construction and Forestry

Covers: 350GLC,1FF350GX_F809192-)

Type: Service Manual

Language: English

Pages: 1071

Format: PDF

Features: Bookmarked, searchable, printable

Compatibility: Windows/Mac/Tablet/Mobile

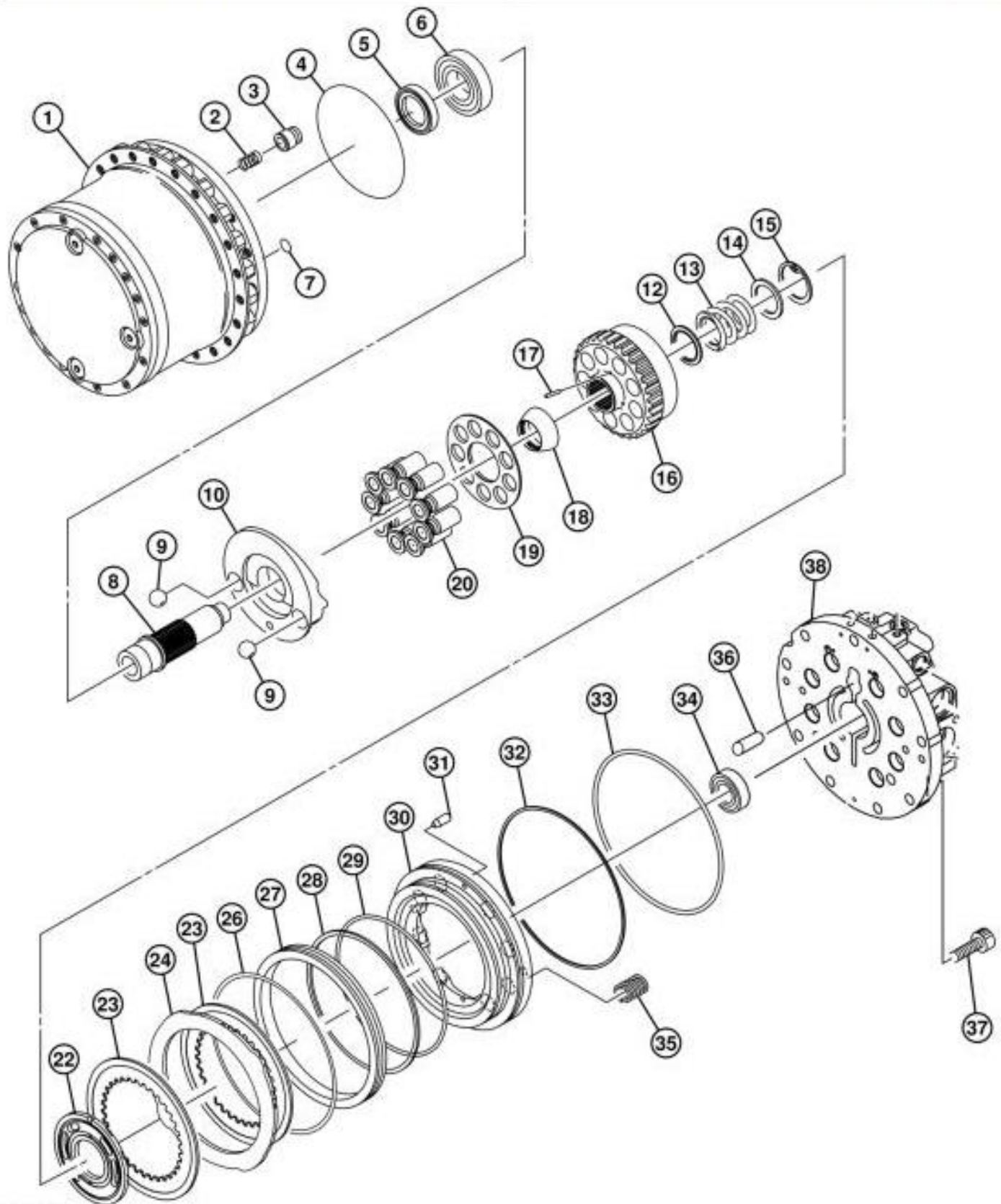
This service manual contains important information for the maintenance, troubleshooting and servicing of the **John Deere 350GLC PIN:1FF350GX_F809192 Excavator Diagnostic, Operation and Test Manual (TM13206X19)**

In this manual you will find detailed specifications, illustrations, schematics, diagrams and step-by-step procedures to properly service and diagnose the machine to the manufacturer's standards.

Contents:

- General Information
- Specifications
- Serial Number Location
- Engine Specifications
- Engine Diagnostics
- Engine Tests and Adjustments
- Engine Repair
- Power Train
- Transmission
- Axles
- Differential
- PTO
- Hydraulic System
- Electrical System
- Electrical Tests and Diagnostics
- Wiring Diagram / Schematic
- Ignition and Charging
- Steering
- Brakes
- Wheels
- Operator's Platform
- Body Panels
- Disassembly and Assembly
- Diagnostics, Tests and Adjustments
- Troubleshooting
- and much more...

Please note this manual is in **downloadable PDF format only**. If you have any questions about this product or would like to request sample pages, please contact us and reference the product name or SKU.



T160623

Propel Motor

LEGEND:

- 1 Propel Gearbox
- 2 Spring (2 used)
- 3 Piston (2 used)
- 4 O-Ring
- 5 Seal



Thank you very much
for your reading.
Please click here
to get more information.