

John Deere 3756G, 3756GLC (SN. F376001-) Log Loader Operation & Test Technical Manual (TM14023X19)

3756G and 3756GLC Log Loader Operation and Test

(PIN: 1FF3756G__F376001—)



JOHN HARE



COLLECTION

OPERATION & TEST TECHNICAL MANUAL 3756G and 3756GLC Log Loader (PIN: 1FF3756G__F376001—)

TM14023X19 01DEC18 (ENGLISH)

For complete service information also see:

6090 PowerTech™ OEM Diesel Engines (Final Tier 4/
Stage IV platform) ctm117719
3756G and 3756GLC Log Loader Repair TM14024X19
3756G and 3756GLC Log Loader Operators Manual 1351448x19



Worldwide Construction and
Forestry Division

Covers: 3756G,3756GLC,1FF3756G__,F376001 (◆◆◆◆◆◆◆◆)

Type: Service Manual

Language: English

Pages: 860

Format: PDF

Features: Bookmarked, searchable, printable

Compatibility: Windows/Mac/Tablet/Mobile

This service manual contains important information for the maintenance, troubleshooting and servicing of the **John Deere 3756G, 3756GLC (SN. F376001-) Log Loader Operation & Test Technical Manual (TM14023X19)**

In this manual you will find detailed specifications, illustrations, schematics, diagrams and step-by-step procedures to properly service and diagnose the machine to the manufacturer's standards.

Contents:

- General Information
- Specifications
- Serial Number Location
- Engine Specifications
- Engine Diagnostics
- Engine Tests and Adjustments
- Engine Repair
- Power Train
- Transmission
- Axles
- Differential
- PTO
- Hydraulic System
- Electrical System
- Electrical Tests and Diagnostics
- Wiring Diagram / Schematic
- Ignition and Charging
- Steering
- Brakes
- Wheels
- Operator's Platform
- Body Panels
- Disassembly and Assembly
- Diagnostics, Tests and Adjustments
- Troubleshooting
- and much more...

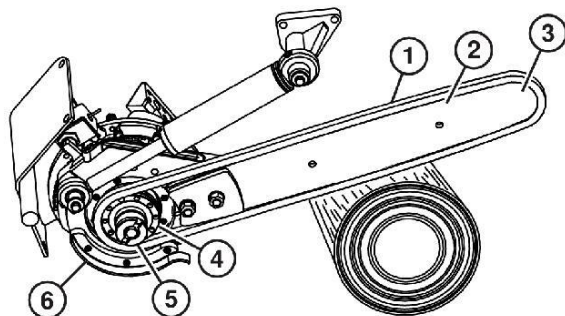
Please note this manual is in **downloadable PDF format only**. If you have any questions about this product or would like to request sample pages, please contact us and reference the product name or SKU.

Chain Shot Guard Inspection



CAUTION:

Serious injury or death can occur. Harvester head can move unpredictably during service procedures. Frame lock pin must always be used during maintenance or adjustment procedures.



TX1076030-UN: Saw



TX1080270A-UN: Typical Saw Components

LEGEND:

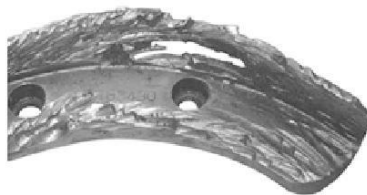
- 1-Saw Chain
- 2-Saw Bar
- 3-Saw Bar Tip
- 4-Saw Chain Drive Sprocket
- 5-Saw Chain Catcher
- 6-Chain Shot Guard

The function of the chain shot guard (6) is to reduce the risk of serious injury or death to operators and bystanders from flying saw chain pieces. The chain shot guard must be in place and structurally sound to absorb the energy from a broken saw chain (1) and reduce the whip action that causes a second break of the saw chain, ejecting pieces of the cutting saw chain at high speed. For additional information about saw chain shot, refer to Saw Chain Hazard in the safety section of this manual.

Inspect chain shot guard daily or when saw chain maintenance is performed.

Saw chain breaks are the primary cause of wear or damage to chain shot guard.

The chain shot guard, cap screws, and hardware should be replaced yearly or when excessively worn or damaged.



TX1080271A-UN: Chain Shot Guard—Perforated



TX1080272A-UN: Chain Shot Guard—Peeled and Torn



TX1080273A-UN: Chain Shot Guard—Worn Thin



TX1080274A-UN: Chain Shot Guard—Edges Worn Away

Identification of excessive chain shot guard wear and damage:

Inspect for wear or damage of the chain shot guard, cap screws, or attaching hardware.

Replace cap screws or hardware when missing or not in place.

Inspect for wear on each end of the chain shot guard.

Inspect for possible cracking on any portion of the chain shot guard.

Inspect for perforations or holes anywhere on the saw chain shot guard.

Make sure that chain shot guard is not worn thin and still maintains the original shape and profile.

Inspect for possible metal peeling or tearing back over any portion of the chain shot guard.

Use only approved replacement parts.

TX,CHAIN,SHOT,GUARD-19-20110120



Thank you very much
for your reading.
Please click here
to get more information.