

# John Deere 437D (SN.C254107-) Knuckleboom Trailer Mount Log Loader Service Repair Manual TM13038X19

437D Knuckleboom Log  
Loader (SN. from C254107)  
Repair



JOHN HARE



COLLECTION

## REPAIR TECHNICAL MANUAL

Trailer Mount models 437D (PIN: 1T0437D\*\*\*C254107-)

TM13038X19 18 AUG 15 (ENGLISH)

**For complete service information also see:**

437D Knuckleboom Log Loader (SN. from C254107) Diagnostic	TM13035X19
JDLink (MTG) Technical Manual	TM114519
Alternators and Starting Motors	CTM77
Pump Drive Service Manual	CTM57
PowerTech E 4.5L & 6.8L Diesel Engine (with Denso HPCR) Electronic Fuel System	CTM507
120 Series Hydraulic Cylinders	
185 Series Hydraulic Cylinders	
125 Series Hydraulic Cylinders	
PowerTech 4.5L & 6.8L Diesel Engine (with Denso HPCR) Tier 2/Stage II, Tier 3/Stage IIIA, Tier 3/Stage IIA Tier 3/Stage IIB Diesel Engine)	CTM104
COOLANT HEATER SERVICE MANUAL	CTM10090X19
JDLINK/ZXLINK Machine Monitoring System	CTM10006



DOWNLOAD



John Deere Construction and Forestry  
Printed by Belgreen



TM13038X19

Covers: 437D,C254107)

**Type:** Service Manual

**Language:** English

**Pages:** 418

**Format:** PDF

**Features:** Bookmarked, searchable, printable

**Compatibility:** Windows/Mac/Tablet/Mobile

This service manual contains important information for the maintenance, troubleshooting and servicing of the **John Deere 437D (SN.C254107-) Knuckleboom Trailer Mount Log Loader Service Repair Manual TM13038X19**

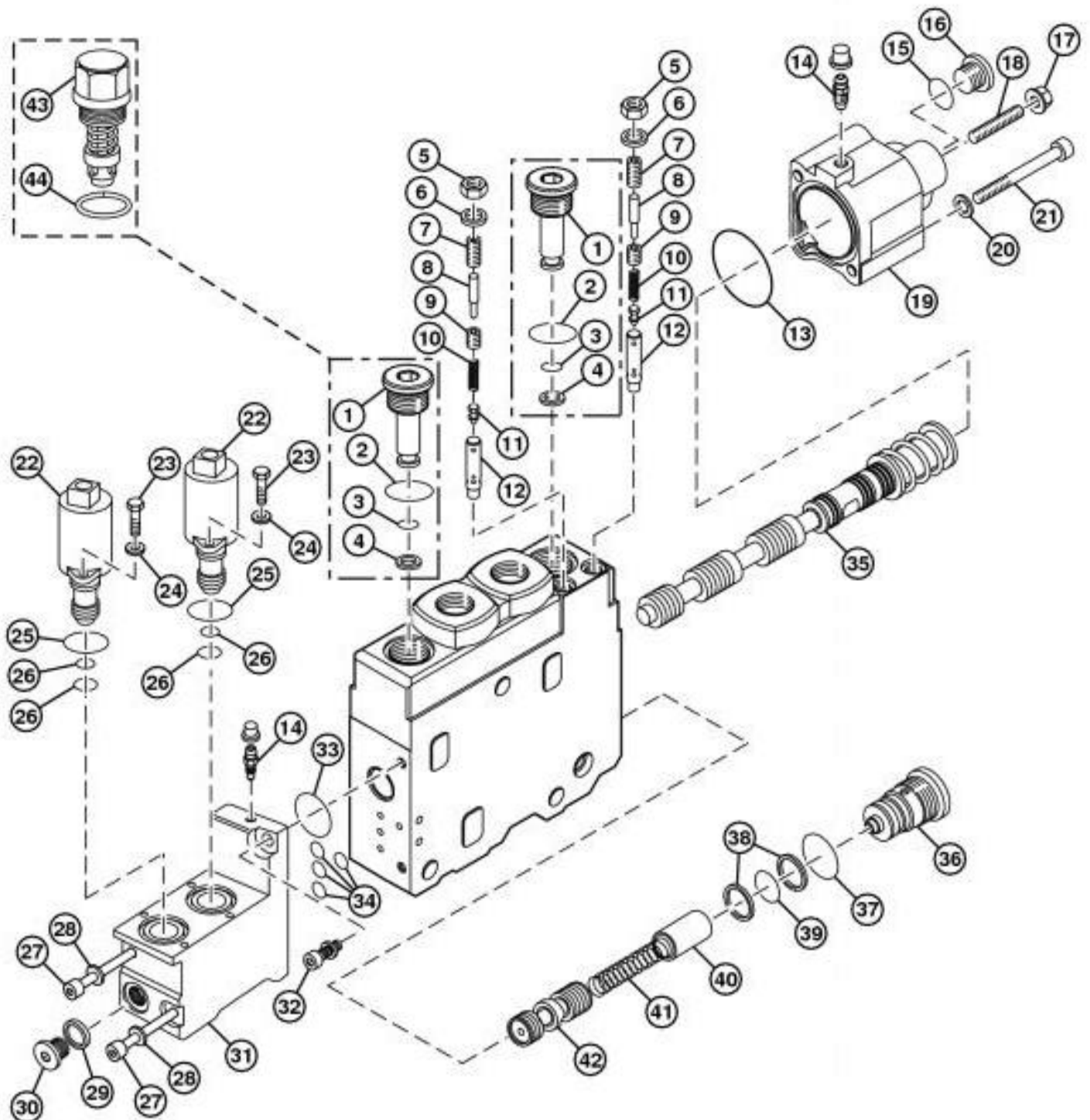
In this manual you will find detailed specifications, illustrations, schematics, diagrams and step-by-step procedures to properly service and diagnose the machine to the manufacturer's standards.

**Contents:**

- General Information
- Specifications
- Serial Number Location
- Engine Specifications
- Engine Diagnostics
- Engine Tests and Adjustments
- Engine Repair
- Power Train
- Transmission
- Axles
- Differential
- PTO
- Hydraulic System
- Electrical System
- Electrical Tests and Diagnostics
- Wiring Diagram / Schematic
- Ignition and Charging
- Steering
- Brakes
- Wheels
- Operator's Platform
- Body Panels
- Disassembly and Assembly
- Diagnostics, Tests and Adjustments
- Troubleshooting
- and much more...

Please note this manual is in **downloadable PDF format only**. If you have any questions about this product or would like to request sample pages, please contact us and reference the product name or SKU.

## Buck Board, Circle Saw Advance/Retract, Stabilizer, Delimber, and Saw Valve Sections Disassemble and Assemble



TX1147303

### Valve Section

#### LEGEND:

- |   |                 |
|---|-----------------|
| 1 | Plug (2 used)   |
| 2 | O-Ring (2 used) |
| 3 | O-Ring (2 used) |



Thank you very much  
for your reading.  
Please click here  
to get more information.