

John Deere 450CLC Excavator Service Repair Technical Manual (TM1925)

450CLC Excavator Repair

REPAIR TECHNICAL MANUAL

450CLC

TM1925 22AUG13 (ENGLISH)

For complete service information also see:

450CLC Excavator Diagnostic TM1924

Alternators and Starting Motors CTM77

Super Caddy Oil Cleanup Procedure CTM310

PowerTech 10.5 L & 12.5 L Diesel
Engines, Level 6 Electronic Fuel Systems with Lucas EUIs CTM188

JDG10274 Ultrasonic Undercarriage
Measurement Guide CTM10001

PowerTech 10.5
Engine



John Deere Construction and Forestry

Covers: 450CLC

Type: Service Manual

Language: English

Pages: 382

Format: PDF

Features: Bookmarked, searchable, printable

Compatibility: Windows/Mac/Tablet/Mobile

This service manual contains important information for the maintenance, troubleshooting and servicing of the **John Deere 450CLC Excavator Service Repair Technical Manual (TM1925)**

In this manual you will find detailed specifications, illustrations, schematics, diagrams and step-by-step procedures to properly service and diagnose the machine to the manufacturer's standards.

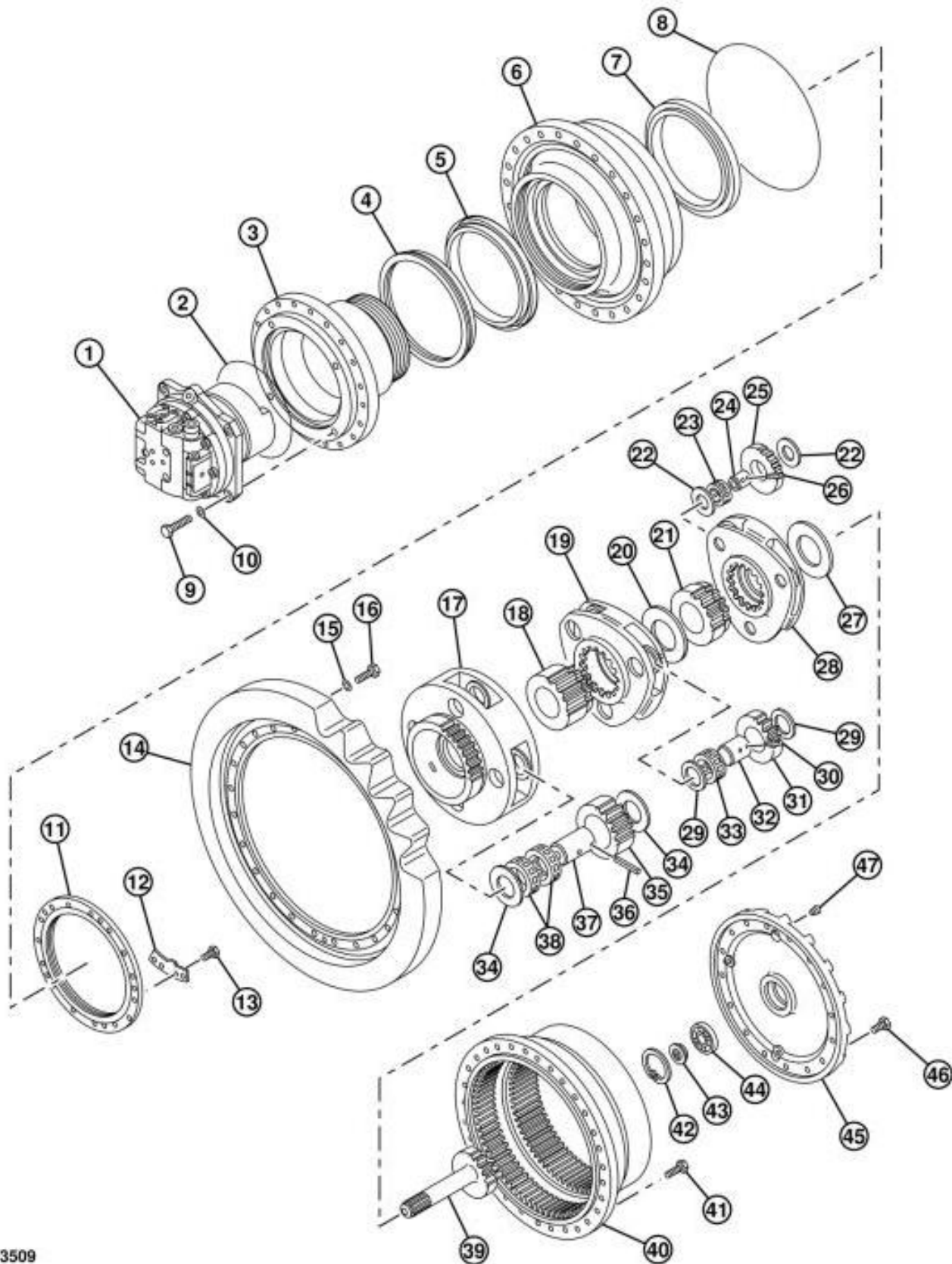
Contents:

- General Information
- Specifications
- Serial Number Location
- Engine Specifications
- Engine Diagnostics
- Engine Tests and Adjustments
- Engine Repair
- Power Train
- Transmission
- Axles
- Differential
- PTO
- Hydraulic System
- Electrical System
- Electrical Tests and Diagnostics
- Wiring Diagram / Schematic
- Ignition and Charging
- Steering
- Brakes
- Wheels
- Operator's Platform
- Body Panels
- Disassembly and Assembly
- Diagnostics, Tests and Adjustments
- Troubleshooting
- and much more...

Please note this manual is in **downloadable PDF format only**. If you have any questions about this product or would like to request sample pages, please contact us and reference the product name or SKU.

Disassemble and Assemble Propel Gearbox

[1] -



T143509

Propel Motor, Exploded View

LEGEND:

1 Propel Motor



Thank you very much
for your reading.
Please click here
to get more information.