


# John Deere 5085E, 5090E, 5090EL, 5100E (FT4) Tractors Diagnosis and Tests Service Manual (TM134419)



344K (SN. from B030077)  
4WD Loader Diagnostic




**OPERATION AND TEST MANUAL**  
**iT4 models 344K (PIN: 1LU344K\*\*\*B030077-)**  
TM12927 04 MAR 16 (ENGLISH)

**For complete service information also see:**

344K Loader Repair (PIN: 1LU344KX__B030077-)	TM12930
JDLINK (MTG) Technical Manual	TM114519
4045 PowerTech Diesel Engines Below 130kW (174hp) (PWX & PVX Interim Tier 4/Stage IIIB) Level 23 ECU	CTM114619
JDLINK/ZXLINK Manual	CTM10006

**PDF**  **DOWNLOAD** 

John Deere Construction and Forestry  
Printed by Belgreen



TM12927

**Covers:** F\_400001,5085E,5090E,5090EL,5100E

**Type:** Service Manual

**Language:** English

**Pages:** 1347

**Format:** PDF

**Features:** Bookmarked, searchable, printable

**Compatibility:** Windows/Mac/Tablet/Mobile

This service manual contains important information for the maintenance, troubleshooting and servicing of the **John Deere 5085E, 5090E, 5090EL, 5100E (FT4) Tractors Diagnosis and Tests Service Manual (TM134419)**

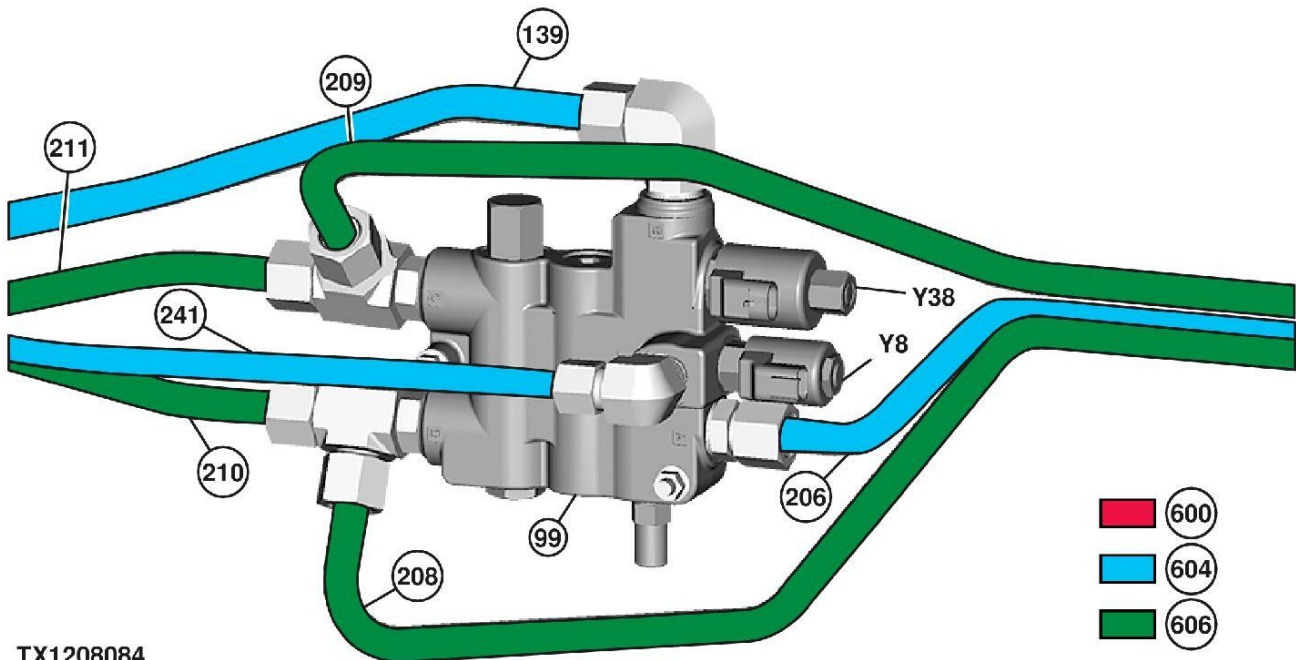
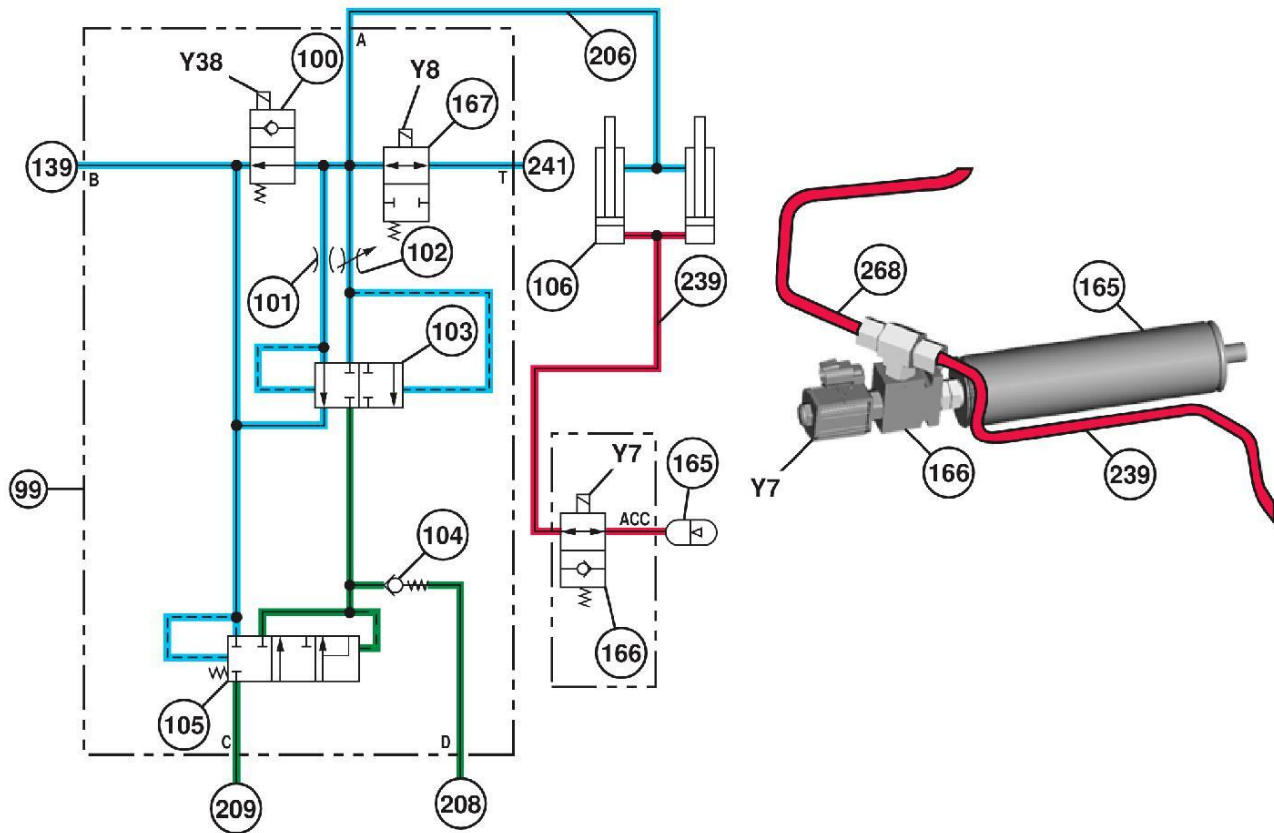
In this manual you will find detailed specifications, illustrations, schematics, diagrams and step-by-step procedures to properly service and diagnose the machine to the manufacturer's standards.

**Contents:**

- General Information
- Specifications
- Serial Number Location
- Engine Specifications
- Engine Diagnostics
- Engine Tests and Adjustments
- Engine Repair
- Power Train
- Transmission
- Axles
- Differential
- PTO
- Hydraulic System
- Electrical System
- Electrical Tests and Diagnostics
- Wiring Diagram / Schematic
- Ignition and Charging
- Steering
- Brakes
- Wheels
- Operator's Platform
- Body Panels
- Disassembly and Assembly
- Diagnostics, Tests and Adjustments
- Troubleshooting
- and much more...

Please note this manual is in **downloadable PDF format only**. If you have any questions about this product or would like to request sample pages, please contact us and reference the product name or SKU.

Ride Control Operation—If Equipped



TX1208084

TX1208084-UN: Ride Control Operation (shown activated)

LEGEND:

- |                                  |   |   |
|----------------------------------|---|---|
| 99-Self Leveling Valve           | 165-Ride Control Accumulator  | 210-Hydraulic Control Valve (bucket dump port)-to-Self Leveling Valve (port D) Line |
| 100-Self Leveling Solenoid Spool | 166-Ride Control Accumulator Valve                                  | 211-Hydraulic Control Valve (bucket curl port)-to-Self Leveling Valve (port C) Line |
| 101-Orifice                      | 167-Ride Control Reservoir Valve                                    | 239-Ride Control Valve-to-Boom Cylinder (rod end) Line                              |
| 102-Adjustable Orifice           | 206-Self Leveling Valve (port A)-to-Boom Cylinder (rod end) Line    | 241-Self Leveling Valve (port T)-to-Hydraulic Oil Reservoir Line                    |
| 103-Flow Divider Valve           | 208-Self Leveling Valve (port D)-to-Bucket Cylinder (head end) Line |   |
| 104-Check Valve                  | 209-Self Leveling Valve (port C)-to-Bucket Cylinder (rod end) Line  |   |
| 105-Unloader Valve               |   |   |
| 106-Boom Cylinder (2 used)       |   |   |
| 139-Hydraulic Control Valve      |   |   |



Thank you very much  
for your reading.  
Please click here  
to get more information.