

# John Deere 524K-II (SN. F677549-) 4WD Loader Operation & Test Technical Service Manual (TM14138X19)

## 624K-II 4WD Loader Repair

(PIN: 1DW624K\_\_\_F677549—)



JOHN HARE



COLLECTION

### REPAIR TECHNICAL MANUAL

624K-II 4WD Loader (PIN: 1DW624K\_\_\_F677549—)

TM14148X19 01DEC18 (ENGLISH)

For complete service information also see:

TeamMate V 1400 Series Inboard Planetary Axles..... ctm143819  
TeamMate™ IV 1200 Series Inboard Planetary Axles..... ctm140119  
624K-II 4WD Loader Operation and Test..... TM14148X19  
PowerTech 6068 OEM Diesel Engines (Final Tier 4/Stage II  
platform) Level 33 ECU..... TM14148X19  
Hydraulic Cylinders..... TM14148X19



Worldwide Construction and  
Forestry Division

Covers: 524K-II, 1DW524K\_\_\_F677549 (◆◆◆◆◆◆◆◆)

**Type:** Service Manual

**Language:** English

**Pages:** 902

**Format:** PDF

**Features:** Bookmarked, searchable, printable

**Compatibility:** Windows/Mac/Tablet/Mobile

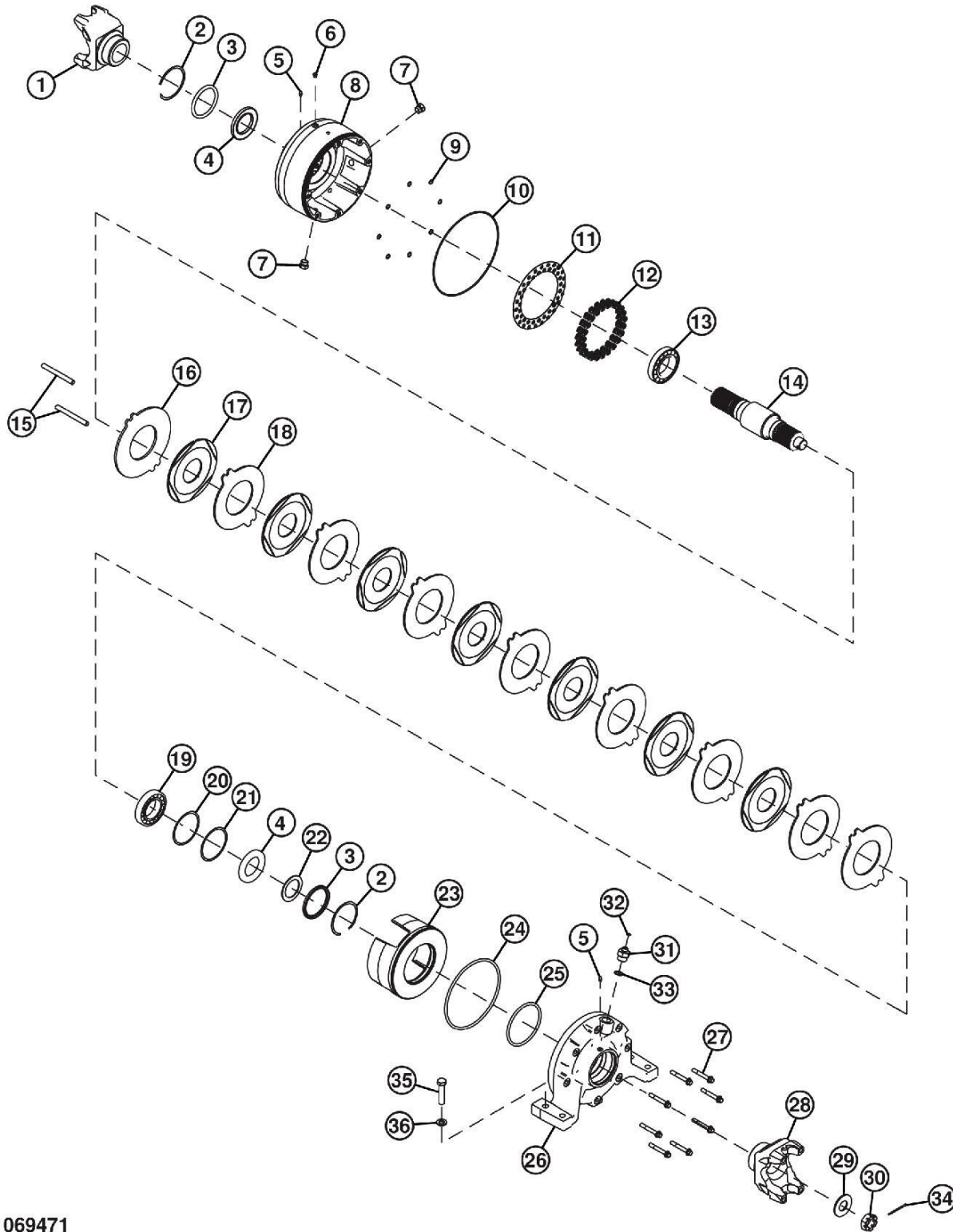
This service manual contains important information for the maintenance, troubleshooting and servicing of the **John Deere 524K-II (SN. F677549-) 4WD Loader Operation & Test Technical Service Manual (TM14138X19)**

In this manual you will find detailed specifications, illustrations, schematics, diagrams and step-by-step procedures to properly service and diagnose the machine to the manufacturer's standards.

**Contents:**

- General Information
- Specifications
- Serial Number Location
- Engine Specifications
- Engine Diagnostics
- Engine Tests and Adjustments
- Engine Repair
- Power Train
- Transmission
- Axles
- Differential
- PTO
- Hydraulic System
- Electrical System
- Electrical Tests and Diagnostics
- Wiring Diagram / Schematic
- Ignition and Charging
- Steering
- Brakes
- Wheels
- Operator's Platform
- Body Panels
- Disassembly and Assembly
- Diagnostics, Tests and Adjustments
- Troubleshooting
- and much more...

Please note this manual is in **downloadable PDF format only**. If you have any questions about this product or would like to request sample pages, please contact us and reference the product name or SKU.



**TX1069471**

TX1069471-UN: Park Brake Assembly Components

**LEGEND:**

- 1-Yoke
- 2-Snap Ring
- 3-Outer Seal
- 4-Inner Seal
- 5-Grease Fitting
- 6-Fitting
- 7-Plug and O-Ring
- 8-Housing
- 9-O-Ring (8 used)
- 10-O-Ring
- 11-Spring Retainer
- 12-Spring (46 used)

- 13-Outer Bearing
- 14-Drive Shaft
- 15-Dowel Pin
- 16-Backing Plate
- 17-Friction Disk (7 used)
- 18-Separator Plate (8 used)
- 19-Inner Bearing
- 20-Shim
- 21-Shim
- 22-Spacer
- 23-Piston
- 24-O-Ring

- 25-O-Ring
- 26-Housing Cover
- 27-Cap Screw (8 used)
- 28-Yoke
- 29-Washer
- 30-Drive Shaft Nut
- 31-Fitting
- 32-O-Ring
- 33-O-Ring
- 34-Cotter Pin
- 35-Cap Screw (4 used)
- 36-Washer (4 used)



Thank you very much  
for your reading.  
Please click here  
to get more information.