

John Deere 524K-II (SN. F677549-) 4WD Loader Repair Technical Service Manual (TM14140X19)

524K 4WD Loader (SN. D670308-677548) Repair



REPAIR TECHNICAL MANUAL

4WD Loaders models 524K (PIN: 1DW524K*D670308-677548)**

TM13371X19 22 FEB 16 (ENGLISH)

For complete service information also see:

524K 4WD Loader (SN. D670308-677548) Diagnostic	TM13365X19
JDLINK (MTG) Technical Manual	TM114519
PowerTech E 4.5 and 6.8L Diesel Engines Level 16 Electronic Fuel System With Denso HPCR	CTM502
TMIV1200 - 1400 Series Hydraulic Pumps	CTM442
120 Series Hydraulic Pumps	
PowerTech 4.5L and 6.8L Diesel Engines Level 16 Electronic Fuel System With Denso HPCR 3/Stage IIIA, Tier 3/Stage IIA	

 **DOWNLOAD** 

John Deere Construction and Forestry
Printed by Belgreen

TM13371X19

Covers: 524K-II,1DW524K_,_F677549(???)

Type: Service Manual

Language: English

Pages: 327

Format: PDF

Features: Bookmarked, searchable, printable

Compatibility: Windows/Mac/Tablet/Mobile

This service manual contains important information for the maintenance, troubleshooting and servicing of the **John Deere 524K-II (SN. F677549-) 4WD Loader Repair Technical Service Manual (TM14140X19)**

In this manual you will find detailed specifications, illustrations, schematics, diagrams and step-by-step procedures to properly service and diagnose the machine to the manufacturer's standards.

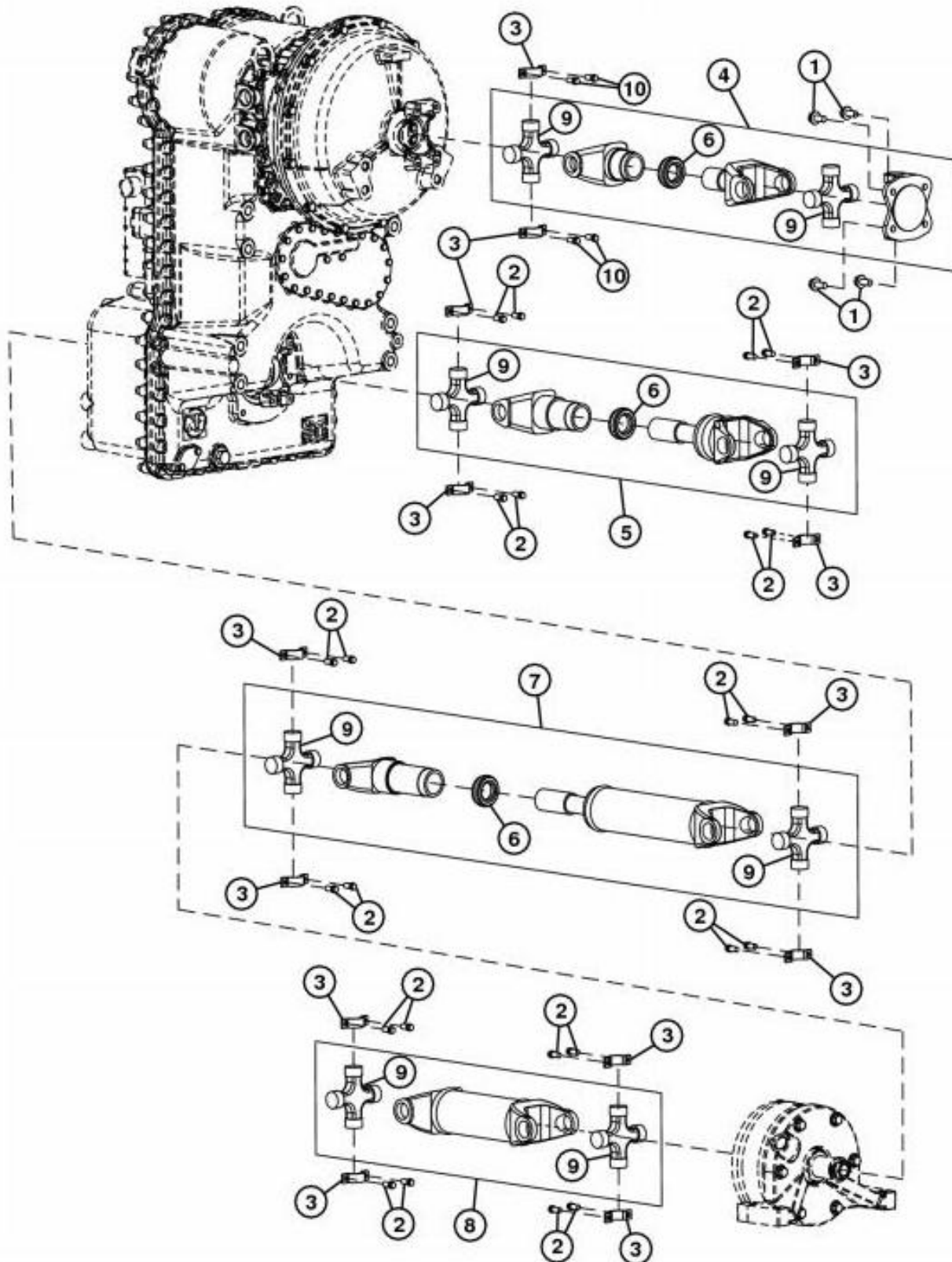
Contents:

- General Information
- Specifications
- Serial Number Location
- Engine Specifications
- Engine Diagnostics
- Engine Tests and Adjustments
- Engine Repair
- Power Train
- Transmission
- Axles
- Differential
- PTO
- Hydraulic System
- Electrical System
- Electrical Tests and Diagnostics
- Wiring Diagram / Schematic
- Ignition and Charging
- Steering
- Brakes
- Wheels
- Operator's Platform
- Body Panels
- Disassembly and Assembly
- Diagnostics, Tests and Adjustments
- Troubleshooting
- and much more...

Please note this manual is in **downloadable PDF format only**. If you have any questions about this product or would like to request sample pages, please contact us and reference the product name or SKU.

Group 0225 - Input Drive Shafts and U-Joints

Universal Joint and Drive Shaft Remove and Install



TX1199843

Universal Joint and Drive Shaft Remove and Install

LEGEND:

- 1 Engine Drive Shaft-to-Engine Cap Screw (4 used)
- 2 Drive Shaft Universal Joint Cap Screw (24 used)



Thank you very much
for your reading.
Please click here
to get more information.