

John Deere 524K 4WD Loader (SN. F670308-677548) Service Repair Technical Manual (TM13368X19)

524K 4WD Loader (SN.
F670308-677548) Repair



REPAIR TECHNICAL MANUAL

4WD Loaders models 524K (PIN: 1DW524K***F670308-677548)

TM13368X19 22 FEB 16 (ENGLISH)

For complete service information also see:

524K 4WD Loader (SN. F670308-677548) Diagnostic

TM13362X19

JDLINK (MTG) Technical Manual

TM114519

TM1V1200 - 1400 Series Inboard Planetary Axles

CTM442

120 Series Hydraulic Cylinders

CTM120519

PowerTech 6068 (Stage IV platform) Level 33

CTM120019

ECU



John Deere Construction and Forestry
Printed by Selgreen



TM13368X19

Covers: 524K,1DW524K***F670308-677548)

Type: Service Manual

Language: English

Pages: 478

Format: PDF

Features: Bookmarked, searchable, printable

Compatibility: Windows/Mac/Tablet/Mobile

This service manual contains important information for the maintenance, troubleshooting and servicing of the **John Deere 524K 4WD Loader (SN. F670308-677548) Service Repair Technical Manual (TM13368X19)**

In this manual you will find detailed specifications, illustrations, schematics, diagrams and step-by-step procedures to properly service and diagnose the machine to the manufacturer's standards.

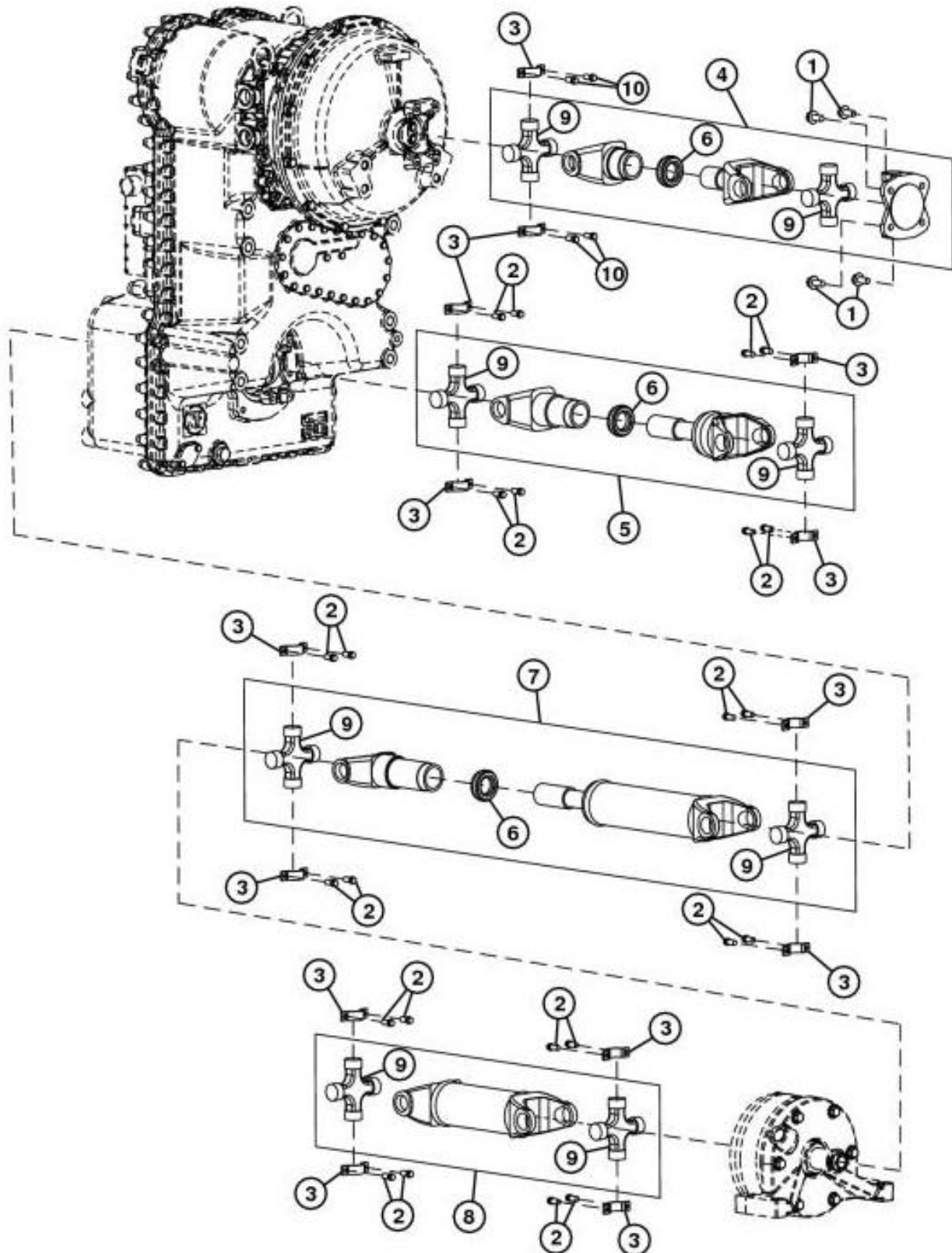
Contents:

- General Information
- Specifications
- Serial Number Location
- Engine Specifications
- Engine Diagnostics
- Engine Tests and Adjustments
- Engine Repair
- Power Train
- Transmission
- Axles
- Differential
- PTO
- Hydraulic System
- Electrical System
- Electrical Tests and Diagnostics
- Wiring Diagram / Schematic
- Ignition and Charging
- Steering
- Brakes
- Wheels
- Operator's Platform
- Body Panels
- Disassembly and Assembly
- Diagnostics, Tests and Adjustments
- Troubleshooting
- and much more...

Please note this manual is in **downloadable PDF format only**. If you have any questions about this product or would like to request sample pages, please contact us and reference the product name or SKU.

Group 0225 - Input Drive Shafts and U-joints

Universal Joint and Drive Shaft Remove and Install



TX1199843

Universal Joint and Drive Shaft Remove and Install

LEGEND:

- 1 Engine Drive Shaft-to-Engine Cap Screw (4 used)
- 2 Drive Shaft Universal Joint Cap Screw (24 used)



Thank you very much
for your reading.
Please click here
to get more information.