

# John Deere 5310N, 5410N and 5510N (Europe) Tractors Diagnostic and Repair Technical Manual (tm4772)

## 5310N, 5410N and 5510N Tractors

### TECHNICAL MANUAL

5310N, 5410N, 5510N

TM4772 29MAY02 (ENGLISH)

For complete service information also see:

Alternators and Starting Motors	CTM77
PowerTech 4.5L and 6.8L Diesel Engines	CTM207
Mechanical Fuel Systems	
PowerTech 2.9L Diesel Engines	CTM125
PowerTech 4.5L & 6.8L Diesel Engines Tier 1/Stage I, Tier 2/Stage II, Tier 3/Stage IIIA, Tier 3/Stage IIA Tier 3/Stage III, (Base Engine)	CTM104



John Deere Agriculture

**Covers:** 5510N,5310N,5410N

**Type:** Service Manual

**Language:** English

**Pages:** 1007

**Format:** PDF

**Features:** Bookmarked, searchable, printable

**Compatibility:** Windows/Mac/Tablet/Mobile

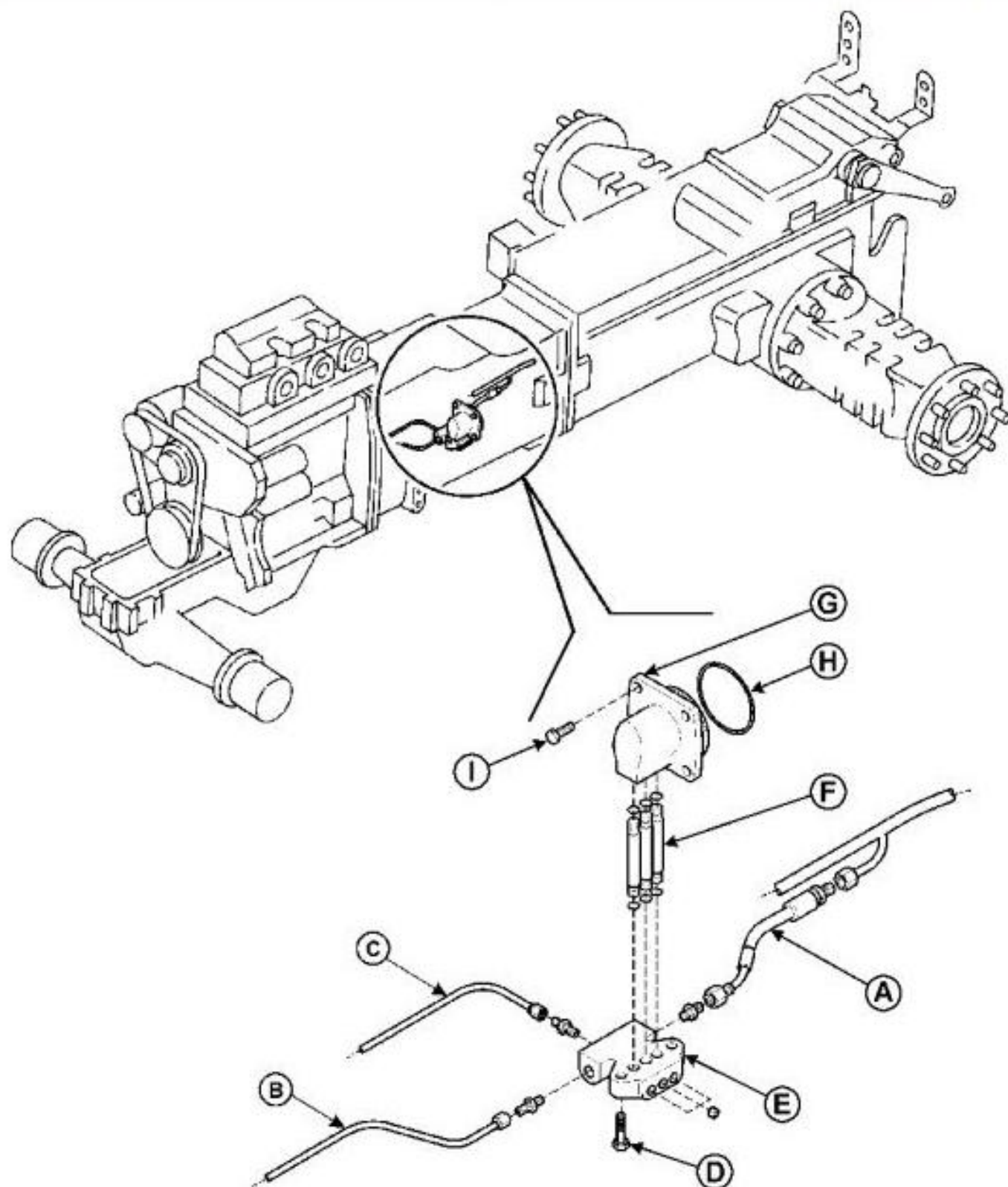
This service manual contains important information for the maintenance, troubleshooting and servicing of the **John Deere 5310N, 5410N and 5510N (Europe) Tractors Diagnostic and Repair Technical Manual (tm4772)**

In this manual you will find detailed specifications, illustrations, schematics, diagrams and step-by-step procedures to properly service and diagnose the machine to the manufacturer's standards.

**Contents:**

- General Information
- Specifications
- Serial Number Location
- Engine Specifications
- Engine Diagnostics
- Engine Tests and Adjustments
- Engine Repair
- Power Train
- Transmission
- Axles
- Differential
- PTO
- Hydraulic System
- Electrical System
- Electrical Tests and Diagnostics
- Wiring Diagram / Schematic
- Ignition and Charging
- Steering
- Brakes
- Wheels
- Operator's Platform
- Body Panels
- Disassembly and Assembly
- Diagnostics, Tests and Adjustments
- Troubleshooting
- and much more...

Please note this manual is in **downloadable PDF format only**. If you have any questions about this product or would like to request sample pages, please contact us and reference the product name or SKU.



AT3658

**Hydraulic Hi-Lo lines****LEGEND:**

- |   |                         |
|---|-------------------------|
| A | Lubrication line        |
| B | Clutch (Hi) supply line |
| C | Clutch (Lo) supply line |
| D | Bolt (2 used)           |
| E | Flange                  |
| F | Pipe (3 used)           |



Thank you very much  
for your reading.  
Please click here  
to get more information.