

# John Deere 540G-III and 548G-III (SN. 630436- ) Skidders Service Repair Technical Manual (TM11809)

## 670G, 670GP, 672G and 672GP Motor Graders Operation and Test

(PIN: 1DW670G\_\_ \_F680878—;  
PIN: 1DW672G\_\_ \_F680878—;  
PIN: 1DW670G\_\_ \_L700954—;  
PIN: 1DW672G\_\_ \_L700954—)



JOHN HARE



COLLECTION

### OPERATION & TEST TECHNICAL MANUAL

#### 670G, 670GP, 672G and 672GP Motor Graders

(PIN: 1DW670G\_\_ \_F680878—; PIN: 1DW672G\_\_ \_F680878—;  
PIN: 1DW670G\_\_ \_L700954—; PIN: 1DW672G\_\_ \_L700954—)

TM14242X19 01DEC18 (ENGLISH)

For complete service info

PDF



DOWNLOAD



670G, 670GP, 672G and 672GP Motor Graders ..... ctm117719  
DF180 Series Powershift Transmission Repair Manual ..... ctm117719  
6090 PowerTech™ OEM Diesel Engines (Final Generation) ..... ctm117719  
IV platform) ..... ctm117719  
JDLink™ 2G / 3G MTG Technical Manual ..... tm114519  
TeamMate™ II 1400 Series Inboard Planetary Axles ..... ctm138619

Worldwide Construction and  
Forestry Division

**Covers:** 540G-III,630436-),548G-III,630436-)

**Type:** Service Manual

**Language:** English

**Pages:** 462

**Format:** PDF

**Features:** Bookmarked, searchable, printable

**Compatibility:** Windows/Mac/Tablet/Mobile

This service manual contains important information for the maintenance, troubleshooting and servicing of the **John Deere 540G-III and 548G-III (SN. 630436- ) Skidders Service Repair Technical Manual (TM11809)**

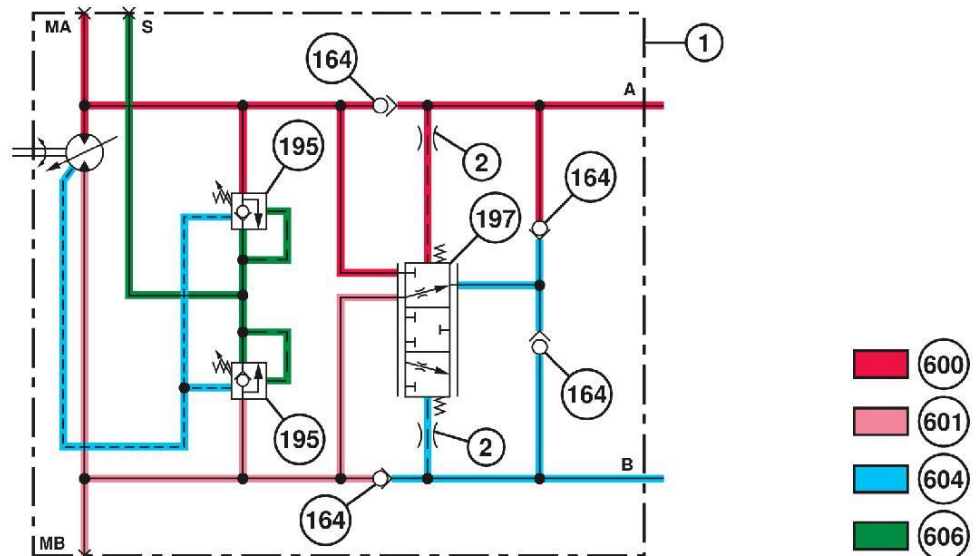
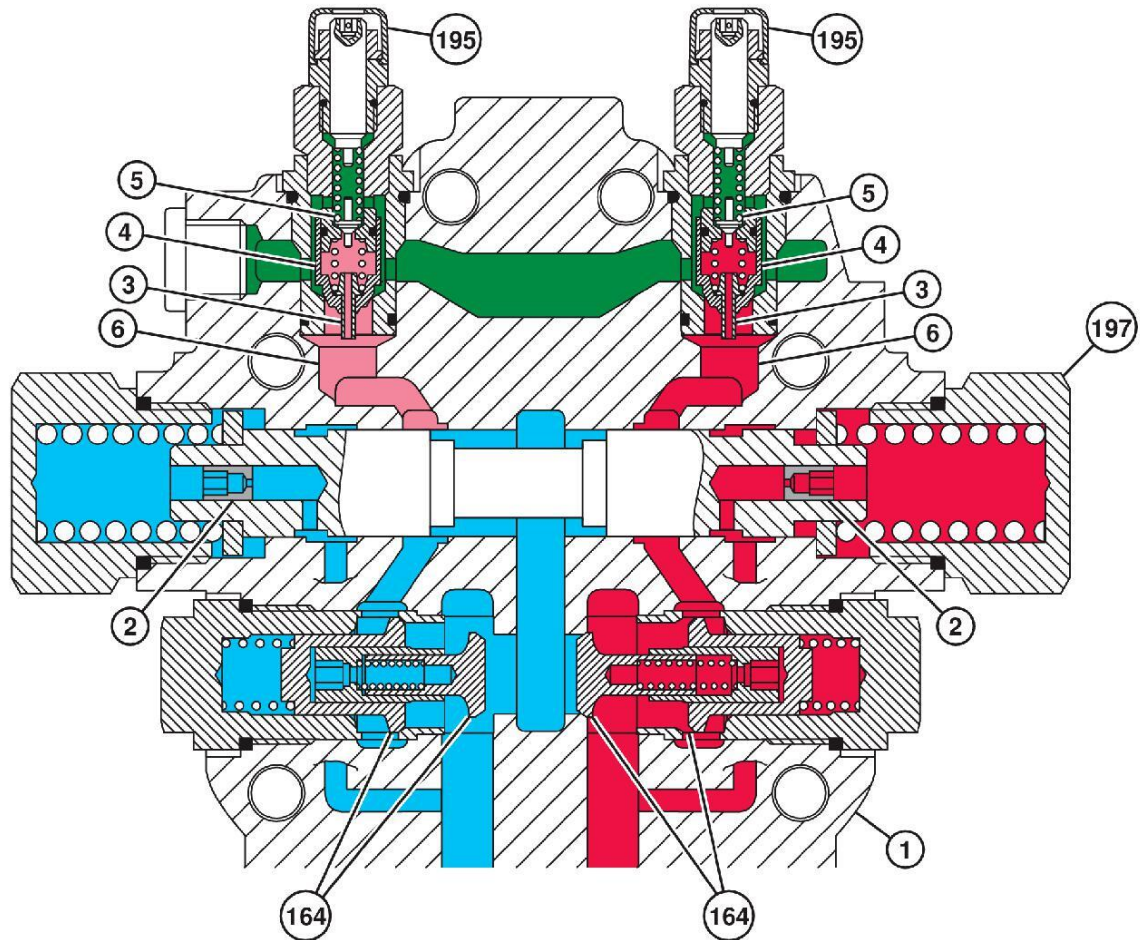
In this manual you will find detailed specifications, illustrations, schematics, diagrams and step-by-step procedures to properly service and diagnose the machine to the manufacturer's standards.

**Contents:**

- General Information
- Specifications
- Serial Number Location
- Engine Specifications
- Engine Diagnostics
- Engine Tests and Adjustments
- Engine Repair
- Power Train
- Transmission
- Axles
- Differential
- PTO
- Hydraulic System
- Electrical System
- Electrical Tests and Diagnostics
- Wiring Diagram / Schematic
- Ignition and Charging
- Steering
- Brakes
- Wheels
- Operator's Platform
- Body Panels
- Disassembly and Assembly
- Diagnostics, Tests and Adjustments
- Troubleshooting
- and much more...

Please note this manual is in **downloadable PDF format only**. If you have any questions about this product or would like to request sample pages, please contact us and reference the product name or SKU.

## Soft Start and Stop Operation



## TX1168256

TX1168256-UN: Soft Start and Stop Operation (forward travel shown)

## LEGEND:

1-Travel Motor (soft start and stop operation shown only)  
 2-Orifice (2 used)  
 3-Anticavitation Poppet Orifice (2 used)  
 4-Anticavitation Poppet (2 used)

5-Relief Poppet (2 used)  
 6-To Motor Rotating Group  
 164-Anticavitation Check Valve (4 used)  
 195-Travel Motor Crossover Relief Valve (2 used)

197-Counterbalance Valve  
 600-High-Pressure Oil  
 601-Medium Pressure Oil  
 604-Return Oil  
 606-Trapped Oil

Travel motors contain a series of valves to soften machine acceleration and deceleration. In turn valves protect travel motor circuit from over pressure, cavitation, and overrunning.



Thank you very much  
for your reading.  
Please click here  
to get more information.