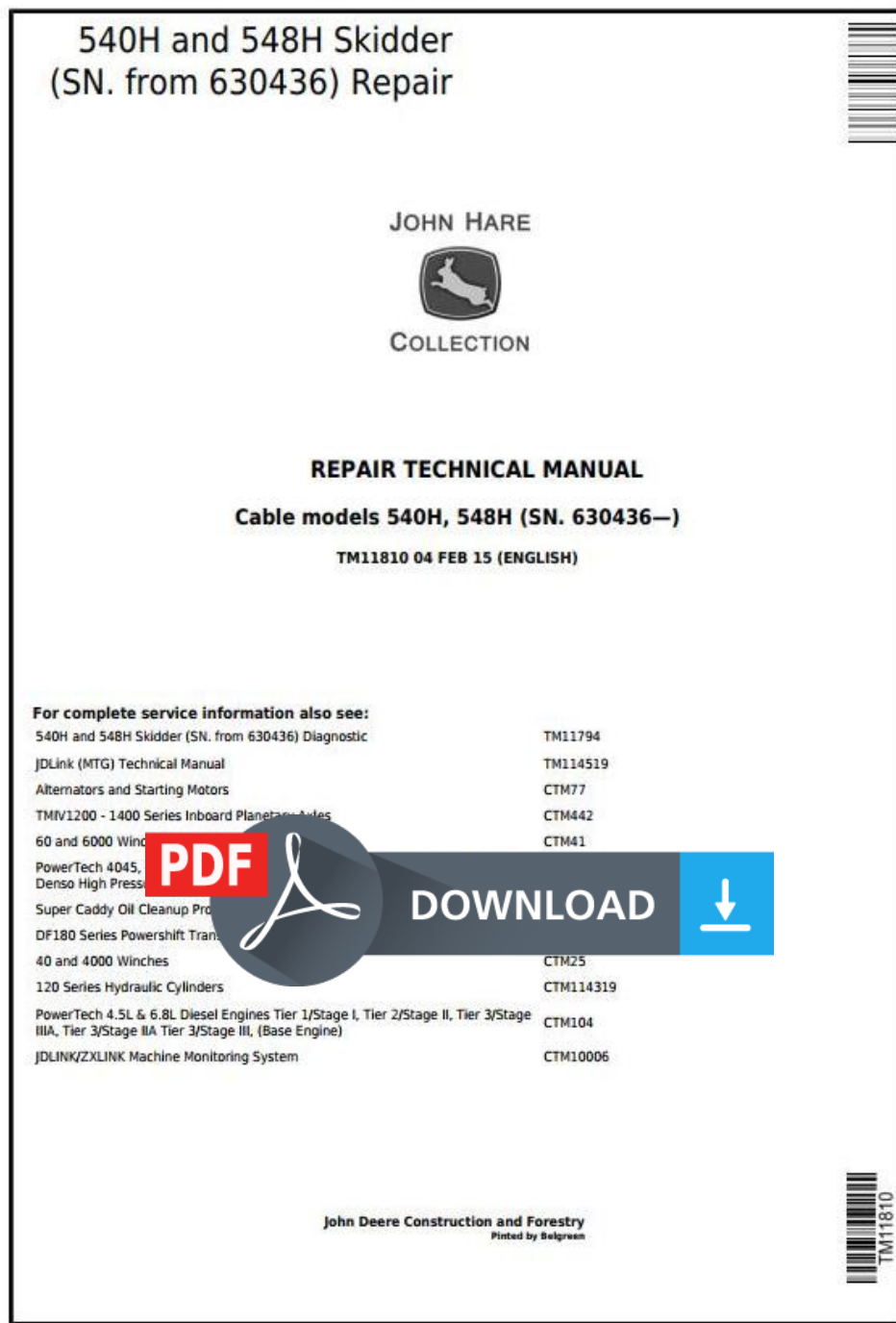


# John Deere 540H Cable Skidder and 548H Grapple Skidder (SN.630436-) Service Repair Manual (TM11810)



Covers: 630436-;540H,548H

**Type:** Service Manual

**Language:** English

**Pages:** 492

**Format:** PDF

**Features:** Bookmarked, searchable, printable

**Compatibility:** Windows/Mac/Tablet/Mobile

This service manual contains important information for the maintenance, troubleshooting and servicing of the **John Deere 540H Cable Skidder and 548H Grapple Skidder (SN.630436-) Service Repair Manual (TM11810)**

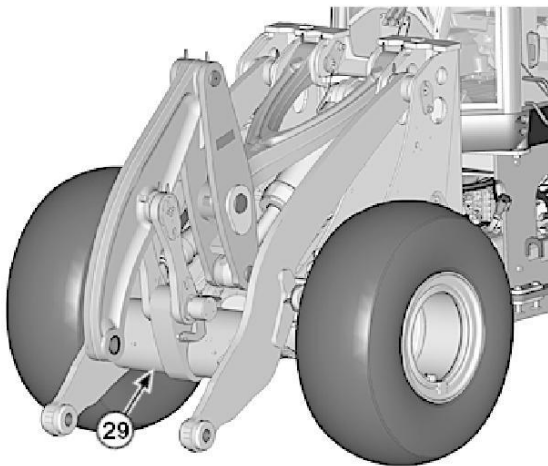
In this manual you will find detailed specifications, illustrations, schematics, diagrams and step-by-step procedures to properly service and diagnose the machine to the manufacturer's standards.

**Contents:**

- General Information
- Specifications
- Serial Number Location
- Engine Specifications
- Engine Diagnostics
- Engine Tests and Adjustments
- Engine Repair
- Power Train
- Transmission
- Axles
- Differential
- PTO
- Hydraulic System
- Electrical System
- Electrical Tests and Diagnostics
- Wiring Diagram / Schematic
- Ignition and Charging
- Steering
- Brakes
- Wheels
- Operator's Platform
- Body Panels
- Disassembly and Assembly
- Diagnostics, Tests and Adjustments
- Troubleshooting
- and much more...

Please note this manual is in **downloadable PDF format only**. If you have any questions about this product or would like to request sample pages, please contact us and reference the product name or SKU.

2.  **CAUTION:**  
Prevent possible crushing injury from heavy component. Use appropriate lifting device.



TX1111399A-UN: Powerlift™ Boom

**LEGEND:**

**29-Cross Tube**

Support boom.

- a. **NOTE:**

Raise boom to easily access linkage pins.

Raise and support boom at cross tube (29) with 10-ton shop stands.

Item	Measurement	Specification
Boom Raise	Height	1041 mm 41 in.
Item	Measurement	Specification
Powerlift™ Boom	Weight (approximate)	1600 kg 3700 lb.

- b. Roll bucket forward until touching ground (if equipped).  
c. If bucket is not attached to coupler, roll coupler forward and support with 10-ton shop stand.
3. Turn battery disconnect switch to the OFF position.

4.  **CAUTION:**  
Prevent possible injury from sudden movement. Support leveling link, bellcrank, and bucket cylinder before removing any pins.

Support bellcrank (8) and bucket cylinder by attaching appropriate lifting device around leveling link (12).

Item	Measurement	Specification
Leveling Link, Bellcrank, and Bucket Cylinder	Weight (approximate)	680 kg 1500 lb.

5. Remove upper bellcrank-to-bucket link pin (11).  
6. Place wood block between bucket cylinder and loader frame. Lower to loader frame.



Thank you very much  
for your reading.  
Please click here  
to get more information.