

John Deere 6110R, 6120R, 6130R and 6135R (Final Tier 4) Tractors Service Repair Manual (TM406819)

3756G and 3756GLC Log Loader Repair
(PIN: 1FF3756G__F376001—)



JOHN HARE



COLLECTION

REPAIR TECHNICAL MANUAL

3756G and 3756GLC Log Loader (PIN: 1FF3756G__F376001—)

TM14024X19 01DEC18 (ENGLISH)

For complete service information also see:

3756G and 3756GLC Log Loader Operators Manual om351448x19
3756G and 3756GLC Log Loader Operation and Test..... TM14023X19
6090 PowerTech™ OEM Diesel Engines (Final Tier 4/
Stage IV platform) tm117719



Worldwide Construction and
Forestry Division

Covers: 6110R,6130R,6135R,6120R

Type: Service Manual

Language: English

Pages: 1718

Format: PDF

Features: Bookmarked, searchable, printable

Compatibility: Windows/Mac/Tablet/Mobile

This service manual contains important information for the maintenance, troubleshooting and servicing of the **John Deere 6110R, 6120R, 6130R and 6135R (Final Tier 4) Tractors Service Repair Manual (TM406819)**

In this manual you will find detailed specifications, illustrations, schematics, diagrams and step-by-step procedures to properly service and diagnose the machine to the manufacturer's standards.

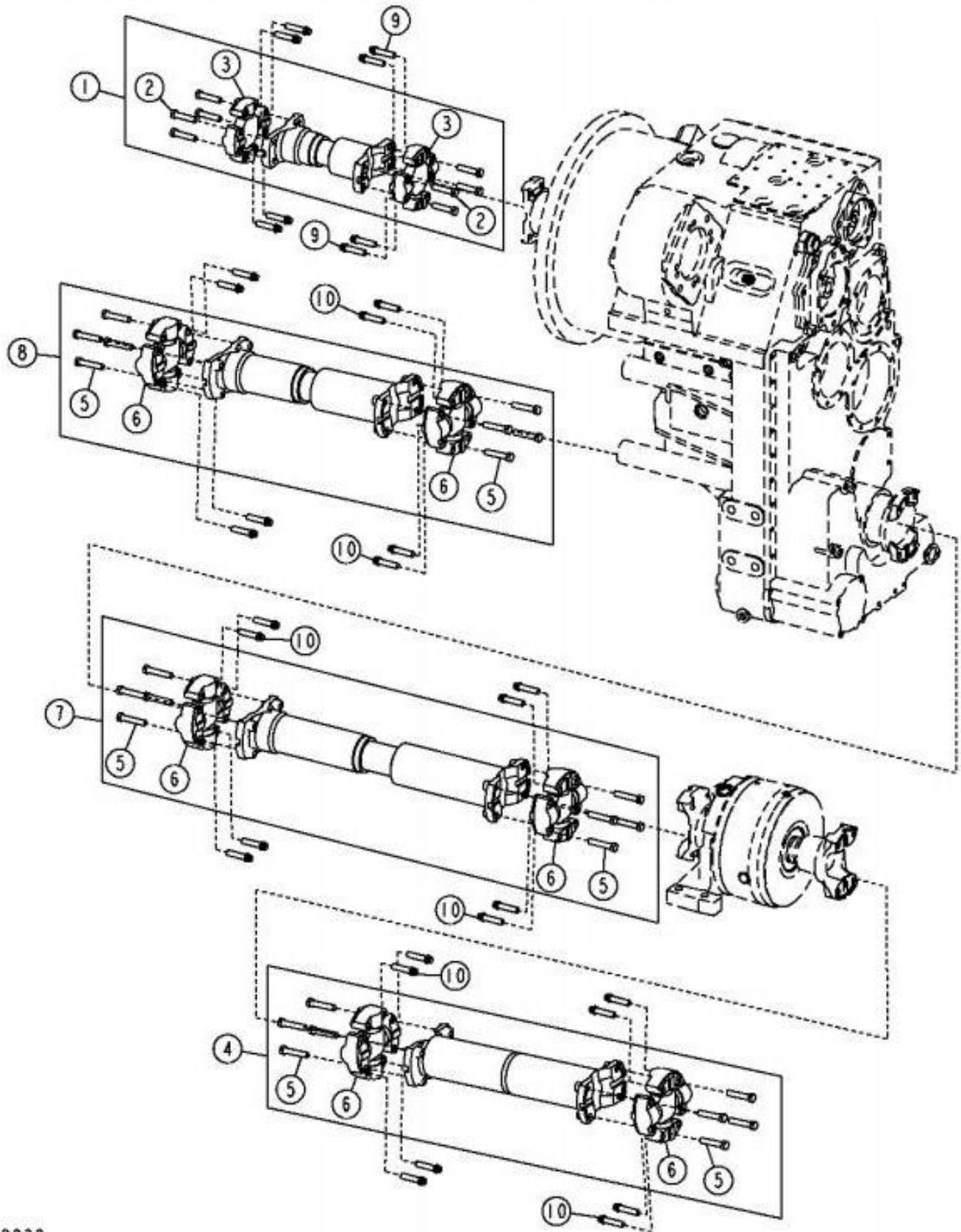
Contents:

- General Information
- Specifications
- Serial Number Location
- Engine Specifications
- Engine Diagnostics
- Engine Tests and Adjustments
- Engine Repair
- Power Train
- Transmission
- Axles
- Differential
- PTO
- Hydraulic System
- Electrical System
- Electrical Tests and Diagnostics
- Wiring Diagram / Schematic
- Ignition and Charging
- Steering
- Brakes
- Wheels
- Operator's Platform
- Body Panels
- Disassembly and Assembly
- Diagnostics, Tests and Adjustments
- Troubleshooting
- and much more...

Please note this manual is in **downloadable PDF format only**. If you have any questions about this product or would like to request sample pages, please contact us and reference the product name or SKU.

Group 0225 - Axle Shafts and U-joints

Universal Joint and Drive Shaft Remove and Install



T212232

Universal Joint and Drive Shaft Assemblies

LEGEND:

- | | |
|---|--------------------|
| 1 | Engine Drive Shaft |
| 2 | Cap Screw (8 used) |



Thank you very much
for your reading.
Please click here
to get more information.