

# John Deere 640H and 648H (SN. before 630435) Skidders Service Repair Technical Manual (TM10313)

**245GLC Excavator  
Repair**

(PIN: 1FF245GX\_  
\_F800001—)



JOHN HARE



COLLECTION

**REPAIR MANUAL**

**245GLC Excavator (PIN: 1FF245GX\_ \_F800001—)**

TM14058X19 01DEC18 (ENGLISH)

For complete service information also see:

245GLC Excavator Operators Manual ..... OMT382335X19  
245GLC Excavator Operation and Test..... TM14057X19



Worldwide Construction and  
Forestry Division

**Covers:** 630435);,640H,648H

**Type:** Service Manual

**Language:** English

**Pages:** 602

**Format:** PDF

**Features:** Bookmarked, searchable, printable

**Compatibility:** Windows/Mac/Tablet/Mobile

This service manual contains important information for the maintenance, troubleshooting and servicing of the **John Deere 640H and 648H (SN. before 630435) Skidders Service Repair Technical Manual (TM10313)**

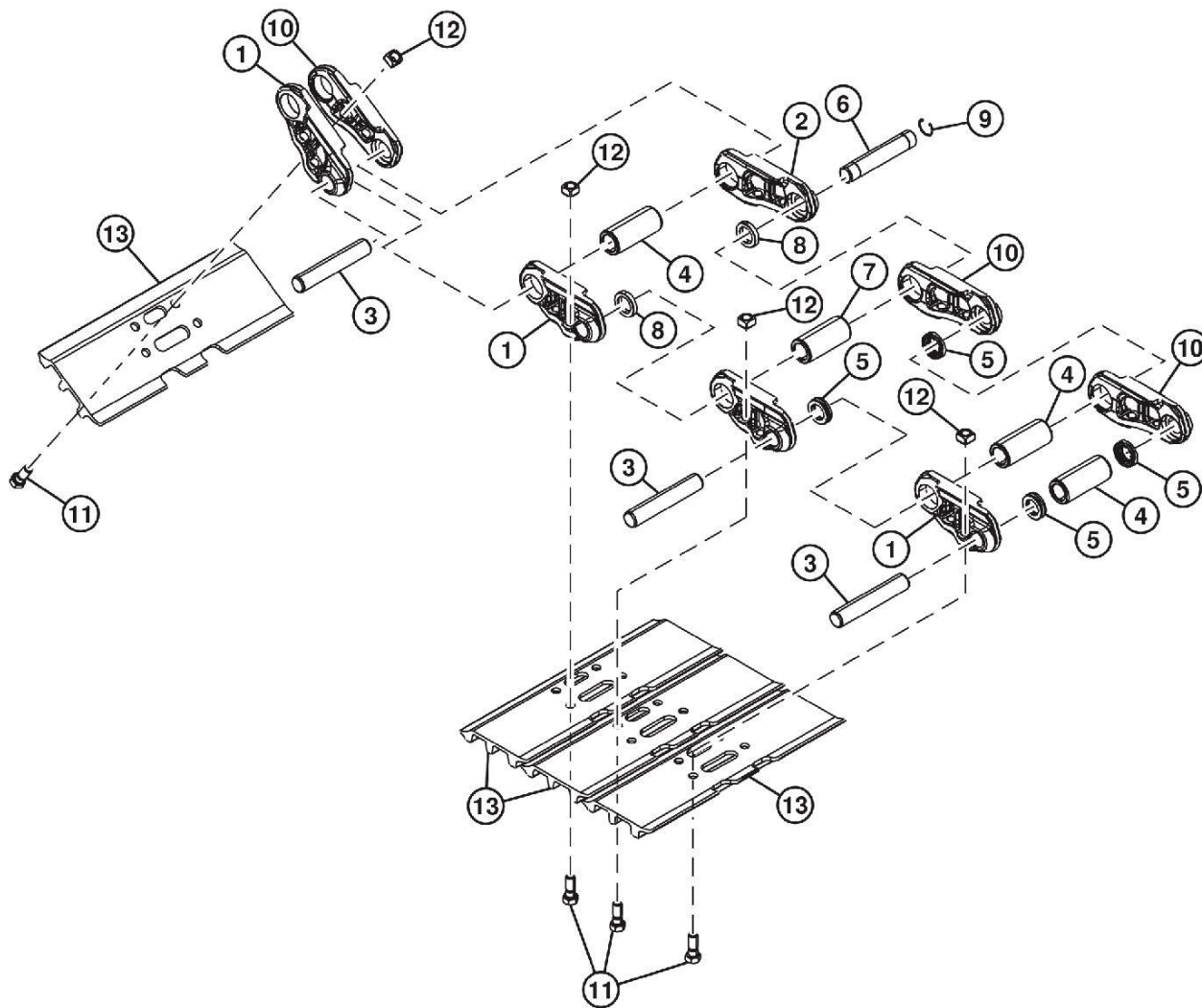
In this manual you will find detailed specifications, illustrations, schematics, diagrams and step-by-step procedures to properly service and diagnose the machine to the manufacturer's standards.

**Contents:**

- General Information
- Specifications
- Serial Number Location
- Engine Specifications
- Engine Diagnostics
- Engine Tests and Adjustments
- Engine Repair
- Power Train
- Transmission
- Axles
- Differential
- PTO
- Hydraulic System
- Electrical System
- Electrical Tests and Diagnostics
- Wiring Diagram / Schematic
- Ignition and Charging
- Steering
- Brakes
- Wheels
- Operator's Platform
- Body Panels
- Disassembly and Assembly
- Diagnostics, Tests and Adjustments
- Troubleshooting
- and much more...

Please note this manual is in **downloadable PDF format only**. If you have any questions about this product or would like to request sample pages, please contact us and reference the product name or SKU.

1.  **CAUTION:**  
Prevent possible crushing injury from heavy component. Use appropriate lifting device.



## TX1119881

TX1119881-UN: Track Chain (exploded view)

### LEGEND:

**1-Left Track Link (46 used)**

**2-Master Track Link**

**3-Track Pin (45 used)**

**4-Bushing (45 used)**

**5-Seal (90 used)**

**6-Master Track Pin**

**7-Master Track Bushing**

**8-Master Track Spacer (2 used)**

**9-Snap Ring**

**10-Right Track Link (45 used)**

**11-Bolt (184 used)**

**12-Nut (184 used)**

**13-600 mm Open Center 3 Bar Shoe; 700 mm Open Center 3 Bar Shoe (46 used)**

Remove tracks using appropriate lifting device. See Track Chain Remove and Install. (Group 0130.)

Item	Measurement	Specification
245GLC Tracks	Weight (approximate)	1260 kg 2778 lb

2. Remove parts (1—13).



Thank you very much  
for your reading.  
Please click here  
to get more information.