


John Deere 6425, 6425HC, 7425, 7425HC, 7525, 7525HC, 6155J, 6155JH Tractors Diagnostic Manual (TM608319)

540G-III, 548G-III, 640G-III,
648G-III, 748G-III Skidders
(SN.-586336) Diagnostic

JOHN HARE

COLLECTION



OPERATION AND TEST MANUAL

Cable models 540G-III, 548G-III, 640G-III; Grapple models 648G-III, 748G-III (SN.-586336)

TM1870 30 JUN 15 (ENGLISH)

For complete service information also see:

G-III Series Skidders 540GIII, 640GIII, 548GIII, 648GIII, 748GIII (SN. before 586336) Repair	TM1871
JDLink (MTG) Technical Manual	TM114519
Alternators and Starting Motors	CTM77
TMIV1200 - 1400 S	
TeamMate II 1200,	
60 and 6000 Winches	
Super Caddy Oil Cleanup Proc	
DF180 Series Powershift Transmis	CTM308
40 and 4000 Winches	CTM25

John Deere Construction and Forestry
Printed by Belgreen

TM1870

Covers: 6425,6425HC,6155J,6155JH,7425,7425HC,7525,7525HC

Type: Service Manual

Language: English

Pages: 1222

Format: PDF

Features: Bookmarked, searchable, printable

Compatibility: Windows/Mac/Tablet/Mobile

This service manual contains important information for the maintenance, troubleshooting and servicing of the **John Deere 6425, 6425HC, 7425, 7425HC, 7525, 7525HC, 6155J, 6155JH Tractors Diagnostic Manual (TM608319)**

In this manual you will find detailed specifications, illustrations, schematics, diagrams and step-by-step procedures to properly service and diagnose the machine to the manufacturer's standards.

Contents:

- General Information
- Specifications
- Serial Number Location
- Engine Specifications
- Engine Diagnostics
- Engine Tests and Adjustments
- Engine Repair
- Power Train
- Transmission
- Axles
- Differential
- PTO
- Hydraulic System
- Electrical System
- Electrical Tests and Diagnostics
- Wiring Diagram / Schematic
- Ignition and Charging
- Steering
- Brakes
- Wheels
- Operator's Platform
- Body Panels
- Disassembly and Assembly
- Diagnostics, Tests and Adjustments
- Troubleshooting
- and much more...

Please note this manual is in **downloadable PDF format only**. If you have any questions about this product or would like to request sample pages, please contact us and reference the product name or SKU.

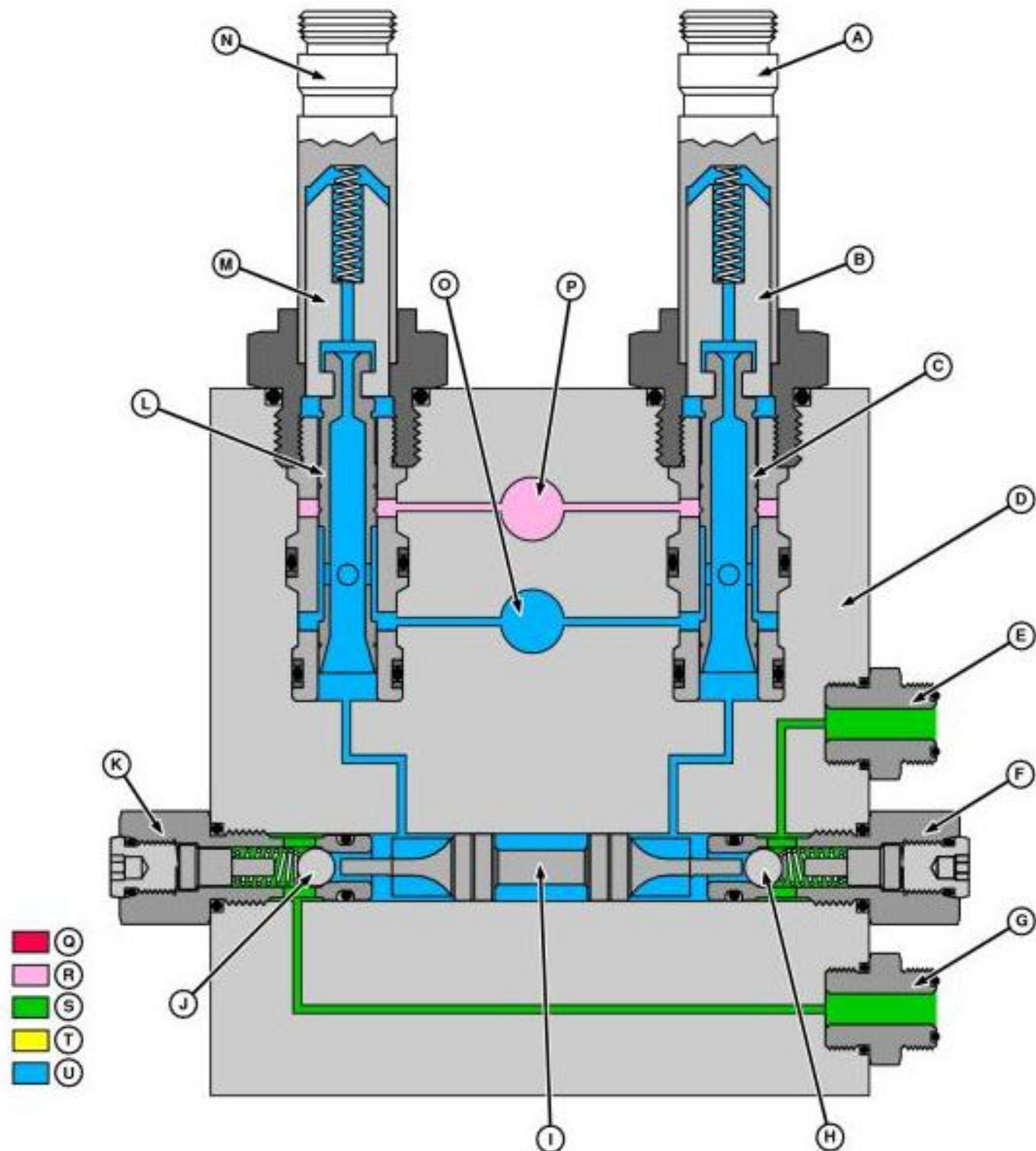
Reel Forward/Reverse Valve

Reel forward/reverse valve operation

Reel forward/reverse is controlled by two-way and three-way solenoid valves cartridges in the hydraulic valves. Check valves operated by pilot are used to avoid reel from moving forward and backwards during operation.

It is necessary pressure oil both to extend and retract reel forward/Secondary cylinders.

Reel forward/reverse solenoid valves cartridges, unloading auger opening and closing and header tilt are identical, and can be replaced for diagnosis purposes.



Reel Forward/Reverse (Neutral)



Thank you very much
for your reading.
Please click here
to get more information.