

# John Deere 653G (SN. from 880060) Tracked Feller Buncher Service Repair Technical Manual (tm1869)

**5403, 5600, 5605,  
5700, 5705 Tractor**

## TECHNICAL MANUAL

**5600, 5700, 5403, 5605, 5705 (S.N. 000001-080728, 000001-080941)**

TM4812 20DEC04 (ENGLISH)

For complete service information also see:

PowerTech 4.5L & 6.8L Diesel Engines Tier  
1/Stage I, Tier 2/Stage II, Tier 3/Stage IIIA, CTM104  
Tier 3/Stage IIA Tier 3/Stage III, (Base  
Engine)



John Deere Agriculture

**Covers:** 653G,880060)

**Type:** Service Manual

**Language:** English

**Pages:** 667

**Format:** PDF

**Features:** Bookmarked, searchable, printable

**Compatibility:** Windows/Mac/Tablet/Mobile

This service manual contains important information for the maintenance, troubleshooting and servicing of the **John Deere 653G (SN. from 880060) Tracked Feller Buncher Service Repair Technical Manual (tm1869)**

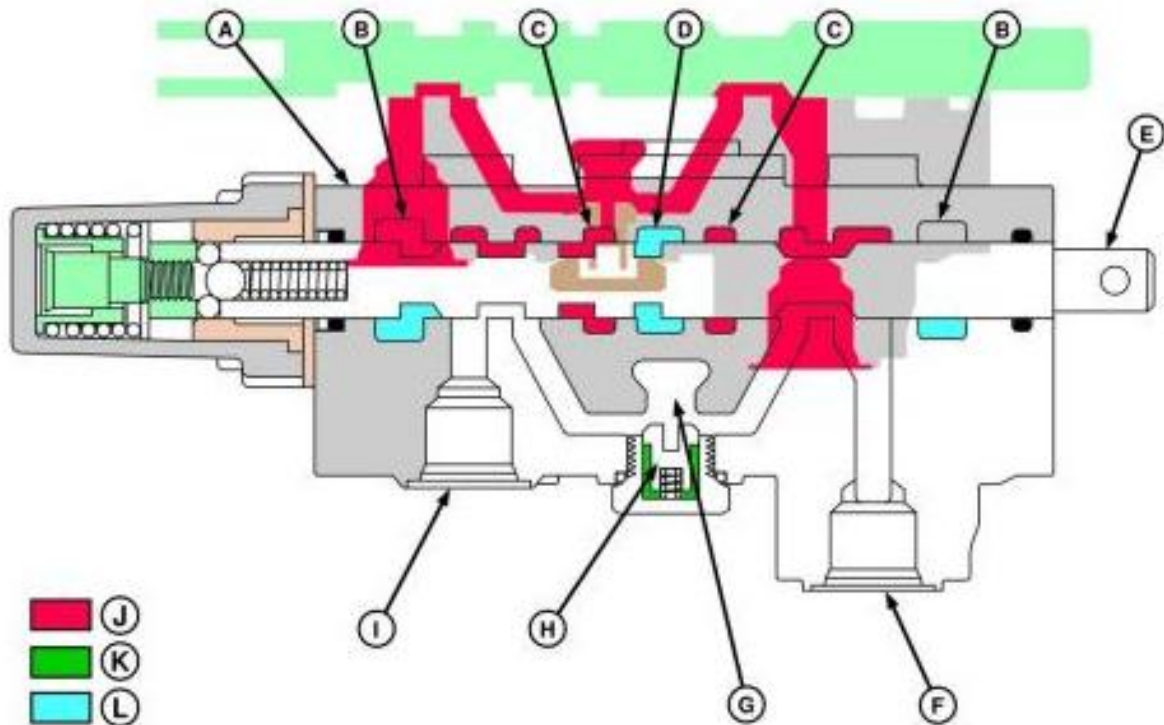
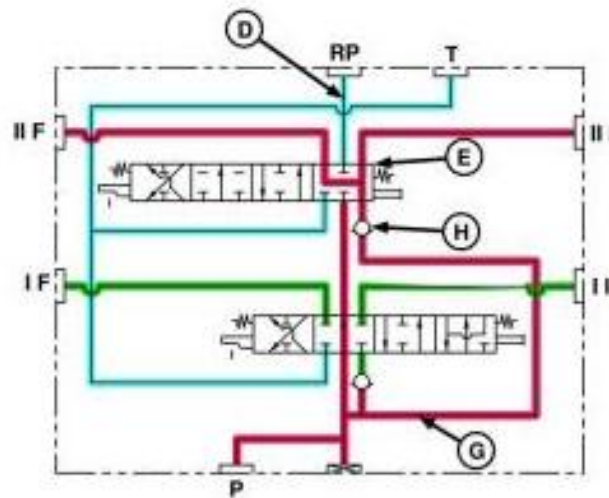
In this manual you will find detailed specifications, illustrations, schematics, diagrams and step-by-step procedures to properly service and diagnose the machine to the manufacturer's standards.

**Contents:**

- General Information
- Specifications
- Serial Number Location
- Engine Specifications
- Engine Diagnostics
- Engine Tests and Adjustments
- Engine Repair
- Power Train
- Transmission
- Axles
- Differential
- PTO
- Hydraulic System
- Electrical System
- Electrical Tests and Diagnostics
- Wiring Diagram / Schematic
- Ignition and Charging
- Steering
- Brakes
- Wheels
- Operator's Platform
- Body Panels
- Disassembly and Assembly
- Diagnostics, Tests and Adjustments
- Troubleshooting
- and much more...

Please note this manual is in **downloadable PDF format only**. If you have any questions about this product or would like to request sample pages, please contact us and reference the product name or SKU.

# Regenerative SCV Operation-Isolated Open Operator Station and Cab Tractors (Regenerative Position)



## SCV Operation-Isolated Open Operator Station and Cab Tractors-Regenerative

**LEGEND:**

- A Valve Housing
- B Sump Passage
- C Inlet Passages
- D Return Pressure Passage
- E Spool
- F Retract Port
- G Spool Inlet Passage
- H Load Check



Thank you very much  
for your reading.  
Please click here  
to get more information.