

John Deere 670G, 670GP, 672G, 672GP (SN.-634753) Motor Grader Service Repair Technical Manual (TM11205)

670G, 670GP, 672G, and
672GP Motor Grader (SN.
before 634753) Repair



REPAIR TECHNICAL MANUAL

Graders (SN. -634753) w.Engines 6090HDW01, 6068HDW75 models 670G, 670GP,
672G, 672GP

TM11205 06 APR 15 (ENGLISH)

For complete service information also see:

JDLink (MTG) Technical Manual	TM114519
670G, 670GP, 672G, and 672GP Motor Grader (SN. —634753) Diagnostic	TM11204
TeamMate II 1200, 1400, and 1600 Series Inboard Planetary Axles	CTM43
PowerTech 9.0L O Base Engine Repair Manual Stage IIIA Emissions Certified	CTM400
PowerTech 6090 High Pressure Common Rail	
PowerTech 4045, 6068 Diesel Denso High Pressure Common	
DF180 Series Powershift Transmissions	CTM308
TeamMate II 1400 Series Inboard Planetary Axles	CTM138619
120 Series Hydraulic Cylinders	CTM120519
120 Series Hydraulic Cylinders	CTM114319
PowerTech 4.5L & 6.8L Diesel Engines Tier 1/Stage I, Tier 2/Stage II, Tier 3/Stage IIIA, Tier 3/Stage IIA Tier 3/Stage III, (Base Engine)	CTM104
JDLINK/ZXLINK Machine Monitoring System	CTM10006



DOWNLOAD



John Deere Construction and Forestry
Printed by Belgreen



Covers: 634753);,670G,670GP,672G,672GP

Type: Service Manual

Language: English

Pages: 586

Format: PDF

Features: Bookmarked, searchable, printable

Compatibility: Windows/Mac/Tablet/Mobile

This service manual contains important information for the maintenance, troubleshooting and servicing of the **John Deere 670G, 670GP, 672G, 672GP (SN.-634753) Motor Grader Service Repair Technical Manual (TM11205)**

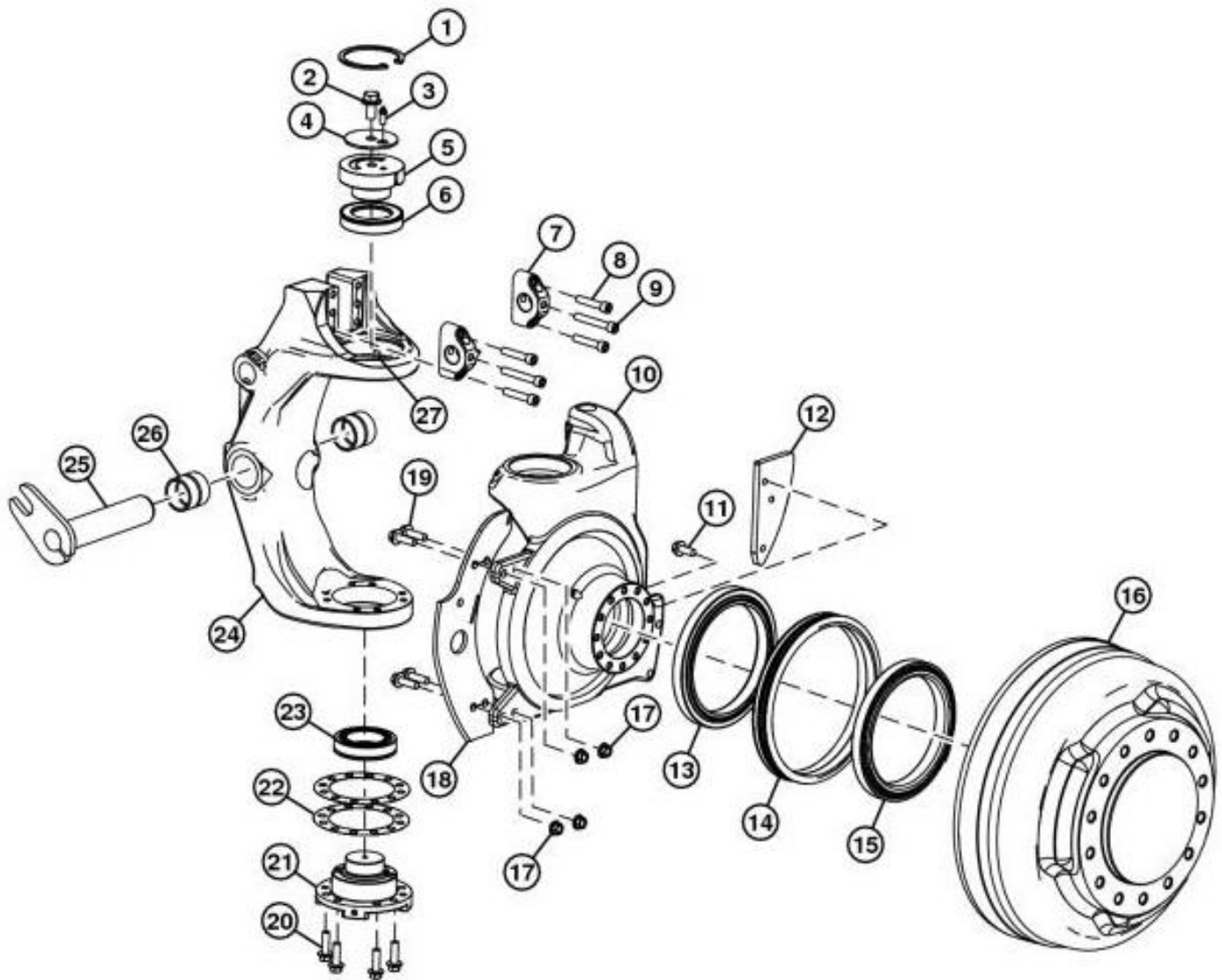
In this manual you will find detailed specifications, illustrations, schematics, diagrams and step-by-step procedures to properly service and diagnose the machine to the manufacturer's standards.

Contents:

- General Information
- Specifications
- Serial Number Location
- Engine Specifications
- Engine Diagnostics
- Engine Tests and Adjustments
- Engine Repair
- Power Train
- Transmission
- Axles
- Differential
- PTO
- Hydraulic System
- Electrical System
- Electrical Tests and Diagnostics
- Wiring Diagram / Schematic
- Ignition and Charging
- Steering
- Brakes
- Wheels
- Operator's Platform
- Body Panels
- Disassembly and Assembly
- Diagnostics, Tests and Adjustments
- Troubleshooting
- and much more...

Please note this manual is in **downloadable PDF format only**. If you have any questions about this product or would like to request sample pages, please contact us and reference the product name or SKU.

Front Wheel Hub and Spindle Disassemble and Assemble—6WD



TX1058912

Front Hub and Spindle

LEGEND:

1	Snap Ring
2	Cap Screw
3	Grease Zerk
4	Spacer
5	Upper King Pin
6	Bearing
7	Lean Angle Linkage Retainer (2 used)
8	Cap Screw (4 used)
9	Cap Screw (2 used)
10	Spindle
11	Cap Screw (3 used)
12	Hose Guard
13	Bearing Assembly
14	Wheel Seal O-Ring



Thank you very much
for your reading.
Please click here
to get more information.