

# John Deere 710G Backhoe Loader Diagnostic, Operation and Test Service Manual (TM2060)

## 605K Crawler Loader (PIN: 1T0605KX\_ \_E237629— ) Repair

### REPAIR TECHNICAL MANUAL

Loader models 605K (PIN: 1T0605KX\_ \_E237629— )

TM12822 06 JUN 14 (ENGLISH)

For complete service information also see:

605K Crawler Loader Diagnostic	TM12821
JDLINK (MTG) Technical Manual	TM114519
120 Series Hydraulic Cylinders	CTM120519
4045 PowerTech Diesel Engines Below 130kW (174hp) (PWX & PVX Interim Tier 4/Stage IIIB) Level 23 ECU	CTM114619



John Deere Construction and Forestry

**Type:** Service Manual

**Language:** English

**Pages:** 679

**Format:** PDF

**Features:** Bookmarked, searchable, printable

**Compatibility:** Windows/Mac/Tablet/Mobile

This service manual contains important information for the maintenance, troubleshooting and servicing of the **John Deere 710G Backhoe Loader Diagnostic, Operation and Test Service Manual (TM2060)**

In this manual you will find detailed specifications, illustrations, schematics, diagrams and step-by-step procedures to properly service and diagnose the machine to the manufacturer's standards.

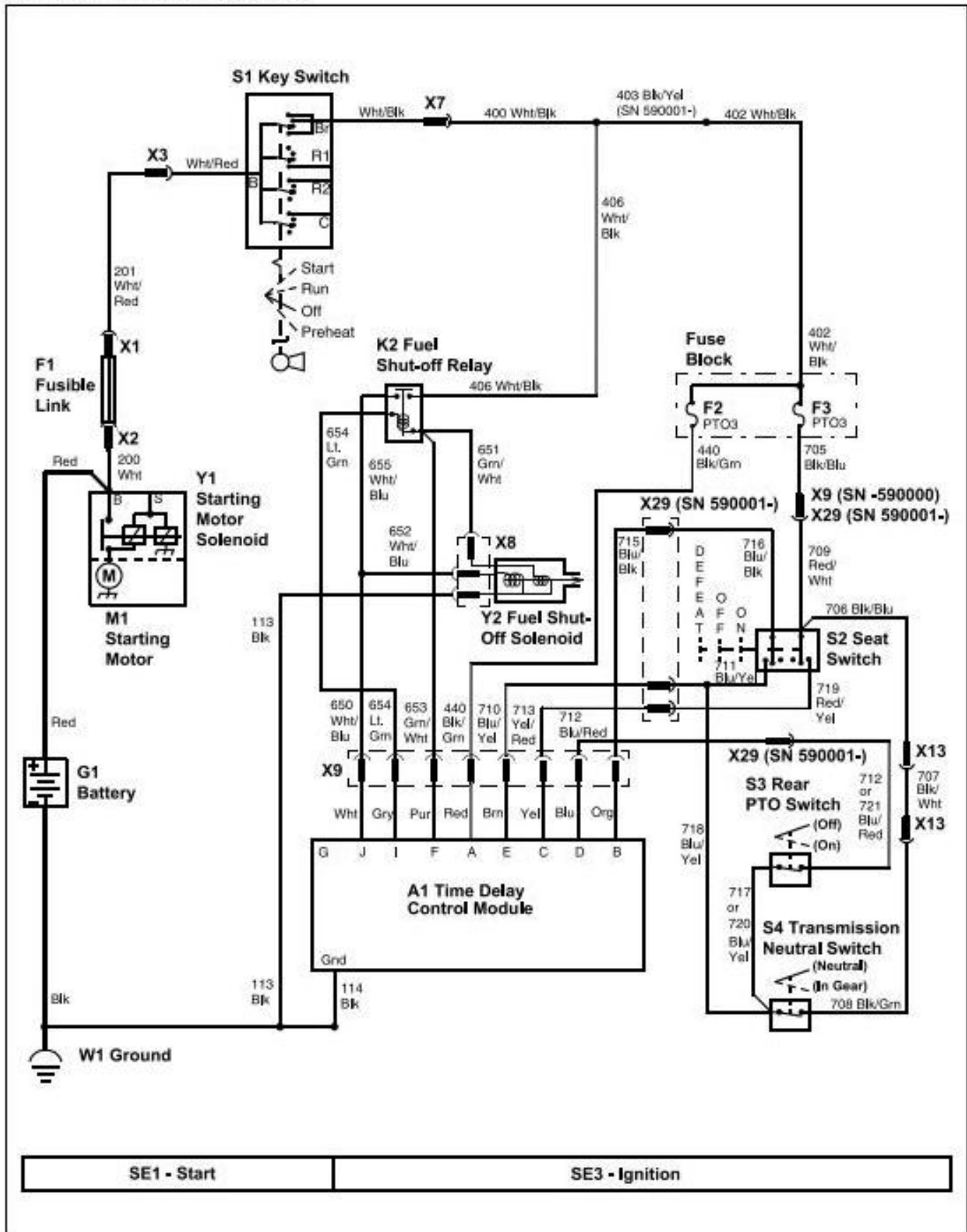
**Contents:**

- General Information
- Specifications
- Serial Number Location
- Engine Specifications
- Engine Diagnostics
- Engine Tests and Adjustments
- Engine Repair
- Power Train
- Transmission
- Axles
- Differential
- PTO
- Hydraulic System
- Electrical System
- Electrical Tests and Diagnostics
- Wiring Diagram / Schematic
- Ignition and Charging
- Steering
- Brakes
- Wheels
- Operator's Platform
- Body Panels
- Disassembly and Assembly
- Diagnostics, Tests and Adjustments
- Troubleshooting
- and much more...

Please note this manual is in **downloadable PDF format only**. If you have any questions about this product or would like to request sample pages, please contact us and reference the product name or SKU.

# ELECTRICAL THEORY OF OPERATION

## Fuel Shutoff Circuit Schematic



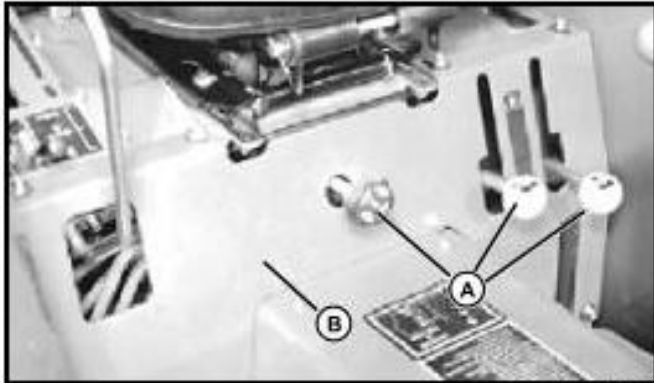
# HYDRAULICS REPAIR

## Selective Control Valve (SCV)

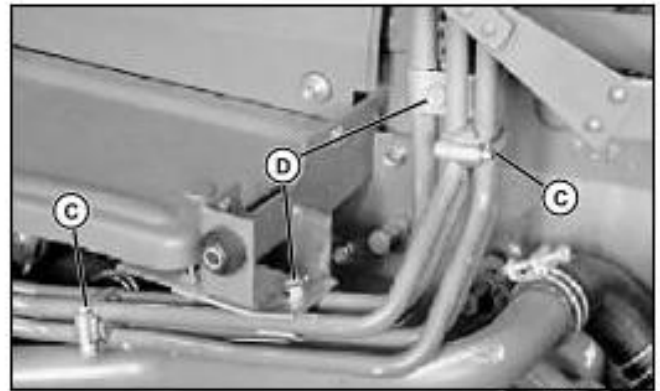
**NOTE:** On machines with SN -590000, the SCV lines are routed to the couplers and support bracket at the left side of the machine. On machines with SN 590001-, the couplers and support bracket are located at the right side of the machine.

Removal:

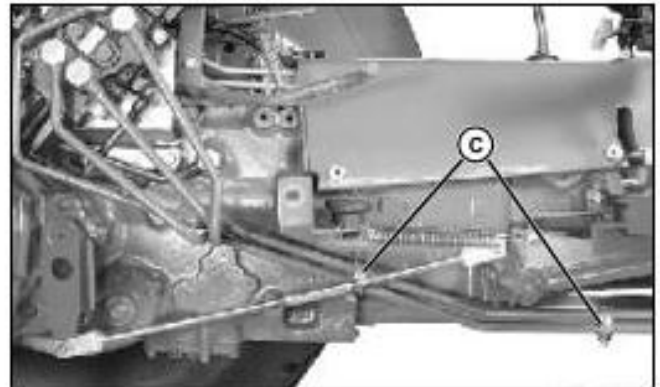
1. Park machine safely. Lower rockshaft arms.



2. Remove knobs (A) and panel (B).
3. Remove SCV lever.
4. Remove RH rear tire and fender.

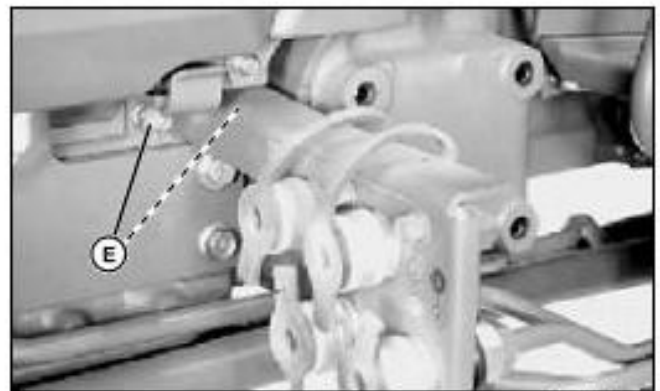


SN -590000 Shown.



SN 590001- Shown.

5. Loosen all line clamps (C).
6. Remove cap screws (D) and clamps (SN -590000).



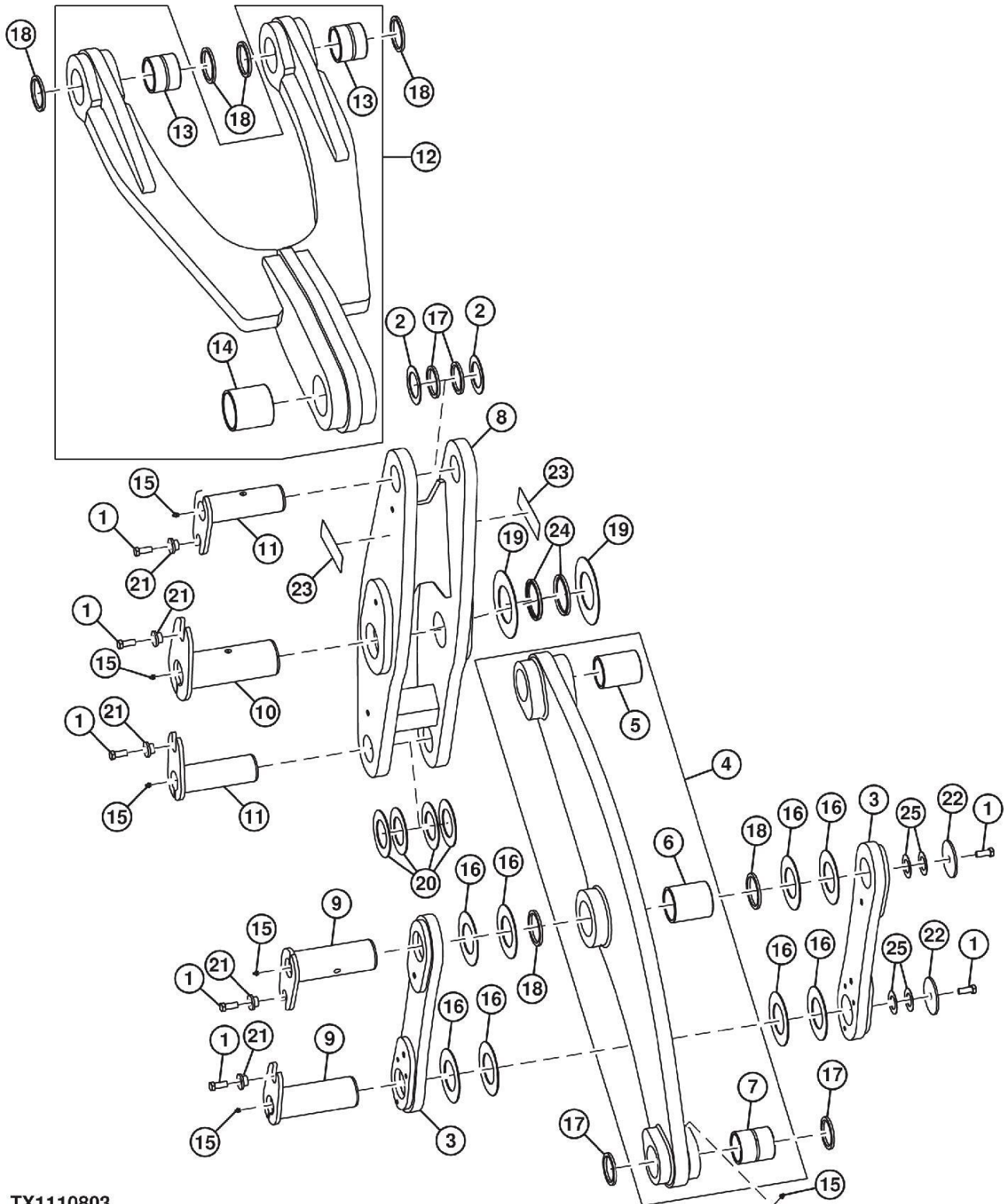
SN -590000 Shown.



**CAUTION:** Avoid Injury! Escaping fluid under pressure can penetrate the skin causing serious injury. Avoid the hazard by relieving pressure before disconnecting hydraulic or other lines. Tighten all connections before applying pressure. Search for leaks with a piece of cardboard. Protect hands and body from high pressure fluids.

If an accident occurs, see a doctor immediately. Any fluid injected into the skin must be surgically removed within a few hours or gangrene may result. Doctors unfamiliar with this type of injury should reference a knowledgeable source. Such information is available from the Deere & Company Medical Department in Moline, Illinois, U.S.A.

## Powerllel™ Bellcrank Remove and Install



## TX1110803

TX1110803-UN: Powerllel™ Linkage

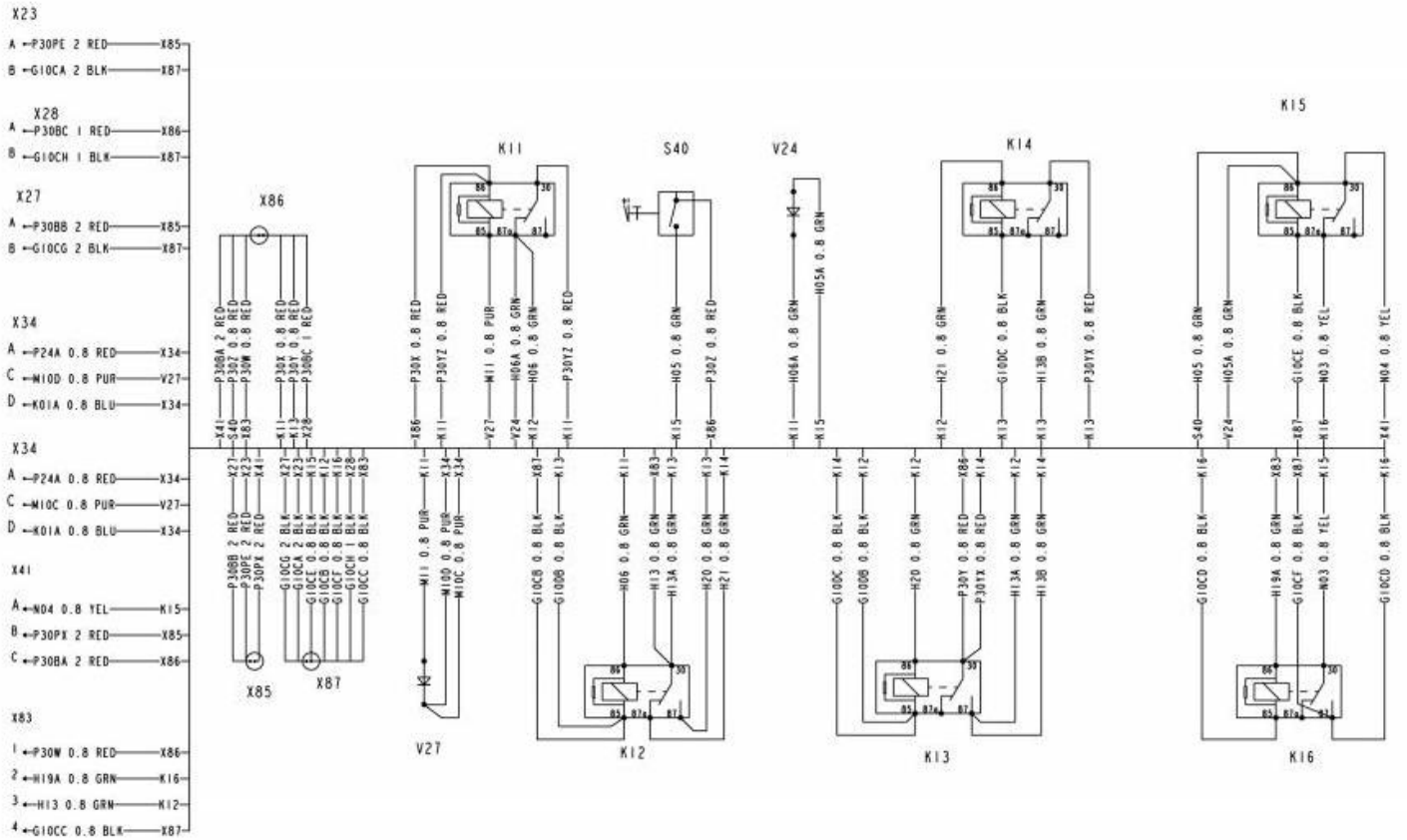
## LEGEND:

- 1-Cap Screw (7 used)
- 2-Shim (as required)
- 3-Guide Link (2 used)
- 4-Bucket Link
- 5-Bushing
- 6-Bushing
- 7-Bushing
- 8-Bellcrank
- 9-Pin (2 used)

- 10-Leveling Link Pin
- 11-Pin (2 used)
- 12-Leveling Link
- 13-Bushing (2 used)
- 14-Bushing
- 15-Lubrication Fitting (6 used)
- 16-Shim (as required)
- 17-Seal (4 used)
- 18-Seal (6 used)

- 19-Shim (as required)
- 20-Shim (as required)
- 21-Bushing (5 used)
- 22-Plate (2 used)
- 23-Safety Sign (2 used)
- 24-Seal (2 used)
- 25-Washer (4 used)

Pilot Control Harness (W11) Wiring Diagram (S.N. 913489-951374)



TX1073587  
Pilot Control Harness (W11) Wiring Diagram



Thank you very much  
for your reading.  
Please click here  
to get more information.