

John Deere 7185J, 7195J, 7205J, 7210J, 7225J Tractors Diagnosis and Tests Service Manual (TM802019)





310G Backhoe Loader
Diagnostic

OPERATION AND TEST MANUAL
Backhoe loader models 310G
TM1885 22 DEC 15 (ENGLISH)

For complete service information also see:

310G Backhoe Loader Repair	TM1886
Alternators and Starting Motors	CTM77
Front Wheel Drive Axles, AS and MS-Series	CTM4687
Series 300 - 3179,4239,6359,4275,5114 Diesel Engines	CTM4
PowerTech 4.5L Level 12 Electronic Stanadyne DE10 Pump	
Super Caddy Oil Cleanup	
PowerTech 4.5L and 6.8L Diesel Engines Mechanical Fuel System	CTM207
120 Series Hydraulic Cylinders	CTM120519
PowerTech 4.5L & 6.8L Diesel Engines Tier 1/Stage I, Tier 2/Stage II, Tier 3/Stage IIIA, Tier 3/Stage IIA Tier 3/Stage III, (Base Engine)	CTM104

John Deere Construction and Forestry
Printed by Belgreen



Covers: 7185J,7205J,7225J,7195J,7210J

Type: Service Manual

Language: English

Pages: 3810

Format: PDF

Features: Bookmarked, searchable, printable

Compatibility: Windows/Mac/Tablet/Mobile

This service manual contains important information for the maintenance, troubleshooting and servicing of the **John Deere 7185J, 7195J, 7205J, 7210J, 7225J Tractors Diagnosis and Tests Service Manual (TM802019)**

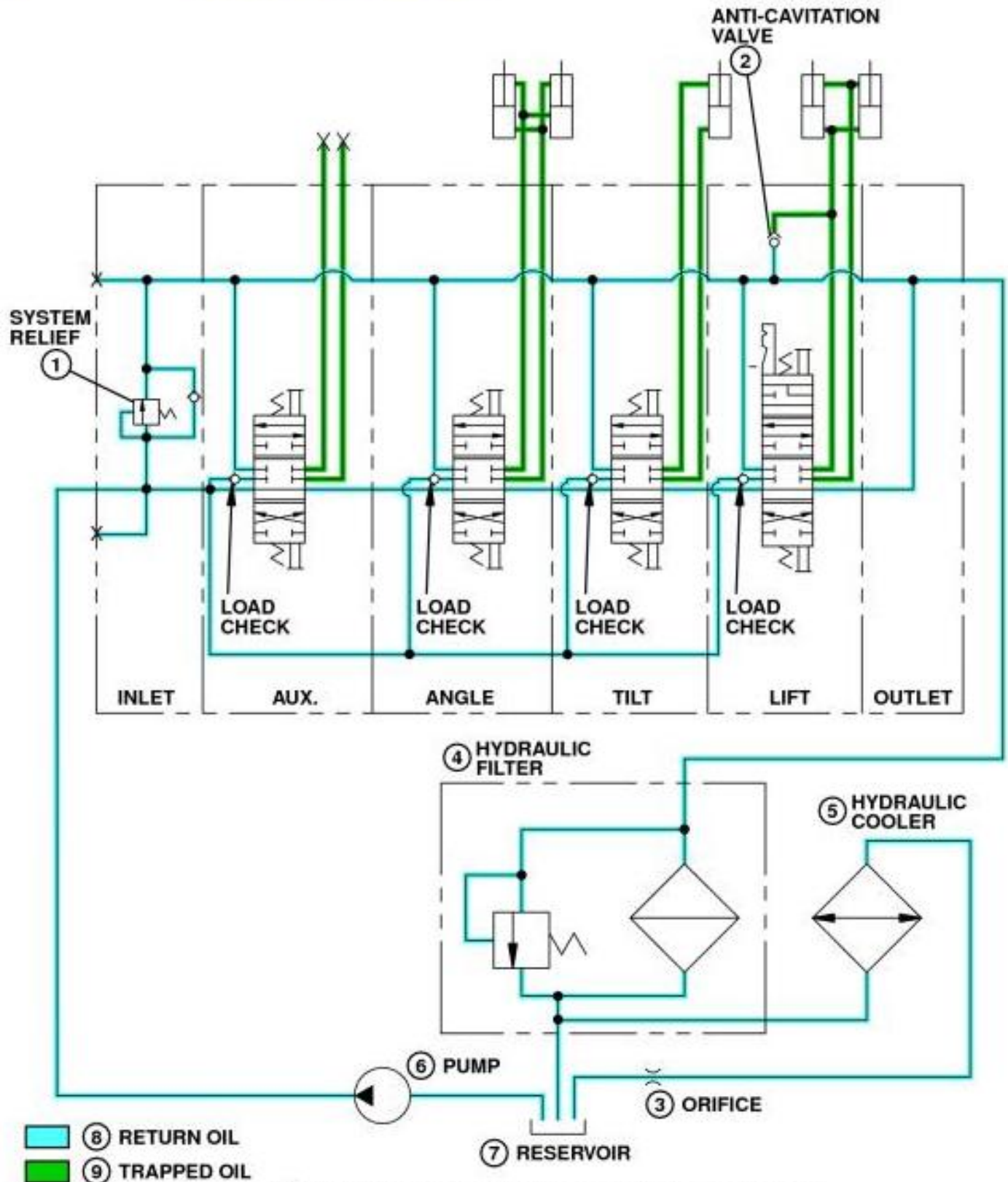
In this manual you will find detailed specifications, illustrations, schematics, diagrams and step-by-step procedures to properly service and diagnose the machine to the manufacturer's standards.

Contents:

- General Information
- Specifications
- Serial Number Location
- Engine Specifications
- Engine Diagnostics
- Engine Tests and Adjustments
- Engine Repair
- Power Train
- Transmission
- Axles
- Differential
- PTO
- Hydraulic System
- Electrical System
- Electrical Tests and Diagnostics
- Wiring Diagram / Schematic
- Ignition and Charging
- Steering
- Brakes
- Wheels
- Operator's Platform
- Body Panels
- Disassembly and Assembly
- Diagnostics, Tests and Adjustments
- Troubleshooting
- and much more...

Please note this manual is in **downloadable PDF format only**. If you have any questions about this product or would like to request sample pages, please contact us and reference the product name or SKU.

- 4 Hydraulic Filter
- 5 Hydraulic Cooler
- 6 Pump
- 7 Reservoir
- 8 Return Oil
- 9 Trapped Oil
- 10 Hydraulic System Schematic-Neutral



T191371

Hydraulic System Schematic-Neutral (S.N. 913521-)



Thank you very much
for your reading.
Please click here
to get more information.